



### AR 413 722

Recirculation blower  
500 CFM

Air recirculation

For installation in 4" toe-kick.

For air recirculation operation, model number SET1AR4102 must be ordered.

### Required installation accessories

#### SET1AR4102

For recirculation operation order model number SET1AR4102 to receive the following three required components:

- AR 413 722 recirculation blower
  - AA 413 722 recirculation kit 2 filters
  - AD 413 722 oval aluminum flex duct
- Recirculation blower and recirculation kit must be combined via oval flex duct for recirculation operation.

For installation in 4" high toe-kick.

### Installation accessories

#### AD 754 048

Transition box with two  $\varnothing 6"$  round intakes to one  $\varnothing 8"$  round outlet. Used in installation with 2x VL 414 downdraft to connect 2x round ducts to AR 413 722 blower (see drawing on opposite page).

#### AD 704 048

Transition box with two  $\varnothing 6"$  round intakes to one  $\varnothing 8"$  round outlet. Required for installation with AL 400 retractable downdraft to connect 2x round ducts to AR 413 722 blower (see drawing on opposite page).

#### AA 010 410

Air exhaust grill for air recirculation mode  
Stainless steel-colored, 36", including installation fittings, height adjustable.

### Optional accessories

#### AA 413 110

2 additional activated charcoal filter with high efficient odor reduction due to large surface. For use with AA 413 722 recirculation kit.

### 400 series recirculation blower

#### AR 413

- Powerful blower for combination with 400 series AL 400 retractable downdraft and VL 414 downdraft
- Quiet blower with high-efficiency BLDC technology
- Compact and space-saving due to installation in a 4-inch high toe-kick

### Output

3 performance output levels and Intensive mode: Sound power and sound pressure depending on built-in situation.

Air recirculation: 500 CFM  
Power levels depend on the ventilation system.

### Features

3 electronically controlled power levels and one intensive mode.  
Blower technology with highly efficient, brushless DC motor (BLDC). Metal housing, zinc-plated.  
Duct connection pieces on intake side: 1 x  $\varnothing 6"$  round.  
Retaining bracket for ceiling installation or installation on the inner side of a cabinetry comes included with the blower.

### Planning notes

This blower can only be combined with 400 series ventilation systems such as AL 400 retractable downdraft and VL 414 downdraft.

For recirculation operation model number SET1AR4102 must be ordered. For SET1AR4102 three required components will be received:

- AR 413 722 recirculation blower
- AA 413 722 recirculation kit with 2 activated charcoal filters
- AD 413 722 oval aluminum flex duct

The AR 413 722 recirculation must be connected to AA 413 722 recirculation kit via AD 413 722 oval flex duct.

Connection to the respective appliances via network cable. Network cable is included with AR 413 722 recirculation blower.

Installation in a 4-inch high toe-kick with cut-out on the cabinet base to connect blower to the duct work of respective ventilation appliance.  
Installation with 2x VL 414 downdraft: to connect 2x VL 414 downdraft with AR 413 722 recirculation blower, transition box AD 754 048 can be used or a Y-connector (can be purchased at local hardware store).  
Transition box AD 704 048 required to connect 2x ducts coming from AL 400 retractable downdraft with AR 413 722 recirculation blower (see adjacent installation example 1).

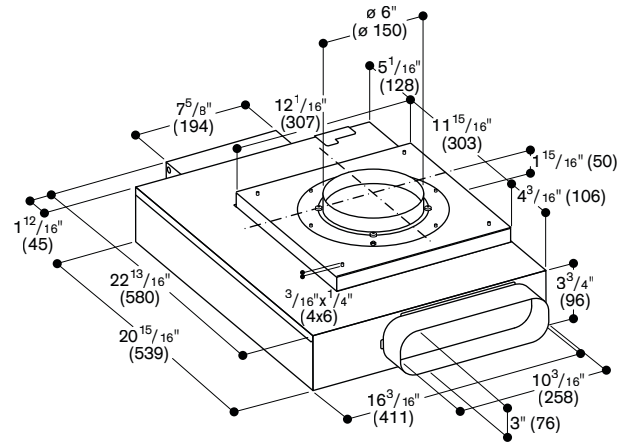
Odor reduction comparable to air extraction mode (95%).  
Filter replacement interval of recirculation kit: 1 - 1 1/2 years depending on cooking frequency.  
Toe-kick must be accessible in order to replace filters.

Recommended minimum gap between filter openings and cabinet wall if there is no ventilation grill directly in front: 6".

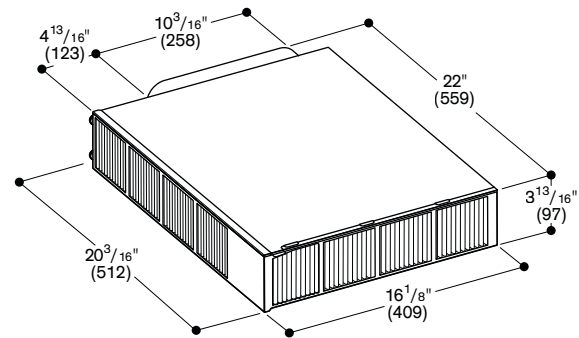
### Rating

Total rating: 170 W.  
Total amps: 10 A.  
120 V / 60 Hz.  
Connecting cable 69" with plug.  
6.5' network cable included.

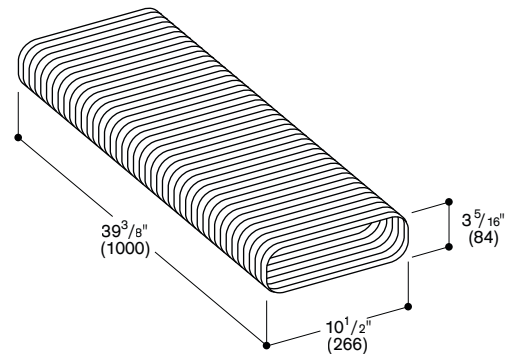
### Recirculation blower AR 413 722



### Recirculation kit AA 413 722



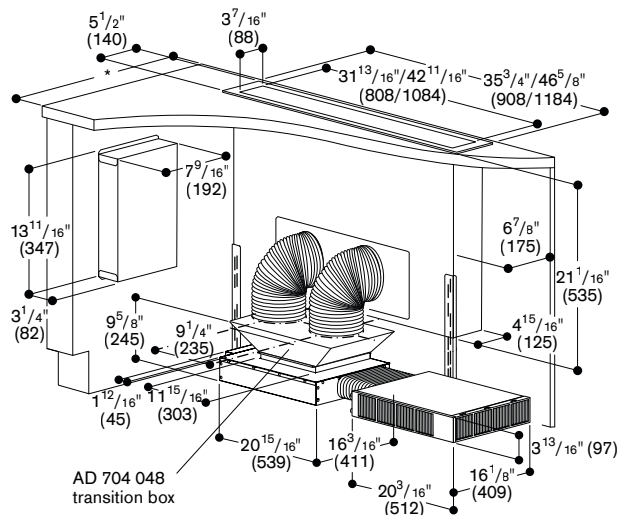
### Aluminum flex duct AD 413 722



Numbers indicated inside parenthesis ( ) = mm

## Installation example 1

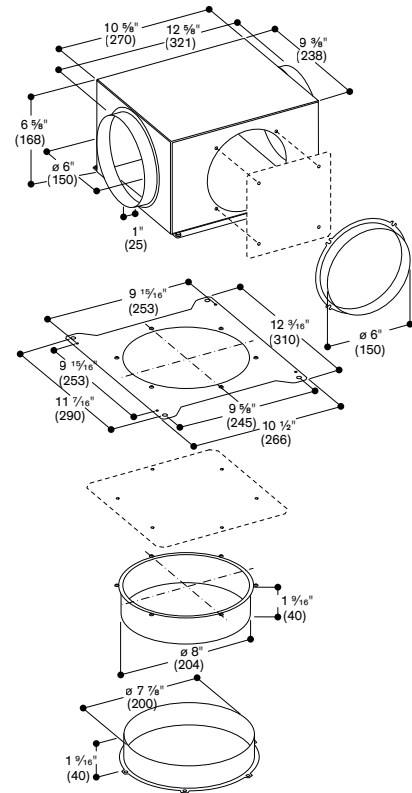
1x AL 400 retractable downdraft with AR 413 722 recirculation blower, AA 413 722 recirculation kit and AD 413 722 flex duct



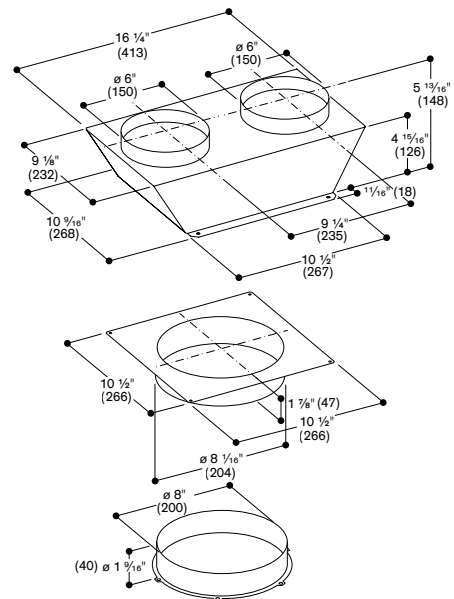
\*For all cooktops with cut-out depth of 19 5/16" (490): total counter-top depth min. 29 1/8" (750).

## Installation accessories

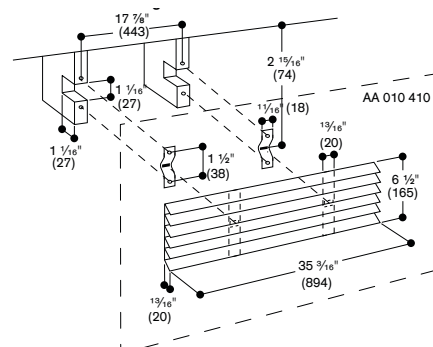
Transition box AD 754 048 for use with 2x VL 414 downdraft



Transition box AD 704 048 for use with AL 400 retractable downdraft



Air exhaust grill AA 010 410



Numbers indicated inside parenthesis ( ) = mm