



# Premium Adjustable Swivel Electric Ironing Center | AE-46

Product Specification Packet

February 2021

## Product Dimensions

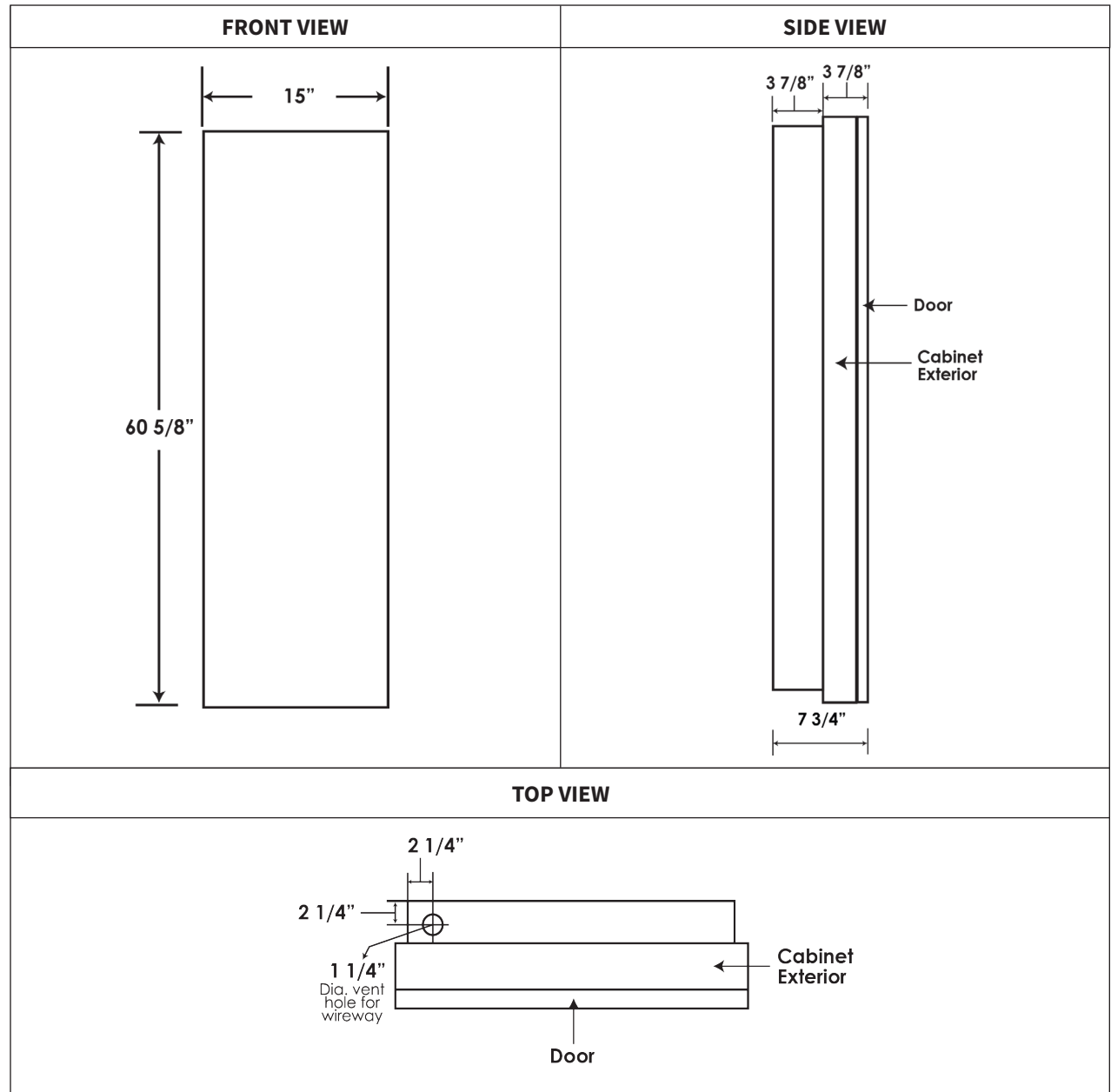
<b>OVERALL SIZE</b>	
Cabinet Height	60 5/8"
Cabinet Width	15"
Cabinet Depth*	7 3/4"
Door Size	60 5/8" H x 15" W x 3/4" D
<b>ROUGH-IN OPENING</b>	
Height	59 7/8"
Width	14 3/8"
Depth*	3 7/8"
<b>DEPTH INTO ROOM</b>	
Recessed*	3 7/8"
Surface Mount*	7 3/4"
<b>CABINET FACE FRAME OVERLAP WHEN RECESSING</b>	
Overlap	3/8"

\*Depth includes door

## Installation Heights

MOUNTING HEIGHT ABOVE FLOOR	DESIRED IRONING HEIGHT	ADJUSTED POSITION HEIGHT
25"	36"	40"
24"	35"	39"
23"	34"	38"
22"	33"	37"
21"	32"	36"

Note: The ironing board automatically engages to lower position each time the board is lowered for use. Higher position requires adjustment and engages back to low position each time the board is put away.



## Swivel Clearance Requirements

Minimum required space for the ironing board to lower completely and swivel without hitting an obstacle.

	RECESSED MOUNT	SURFACE MOUNT
1. Clearance from Wall to Tip of Board	50 7/8"	54 7/8"
2. Left/Right Clearance for Swivel	16 7/8" 14 5/8"	16 7/8" 14 5/8"
3. Hinge Side Clearance for 180° Degree Door Swing	16"	16"

## For Further Review

### 1. Board MUST come down fully in order to swivel

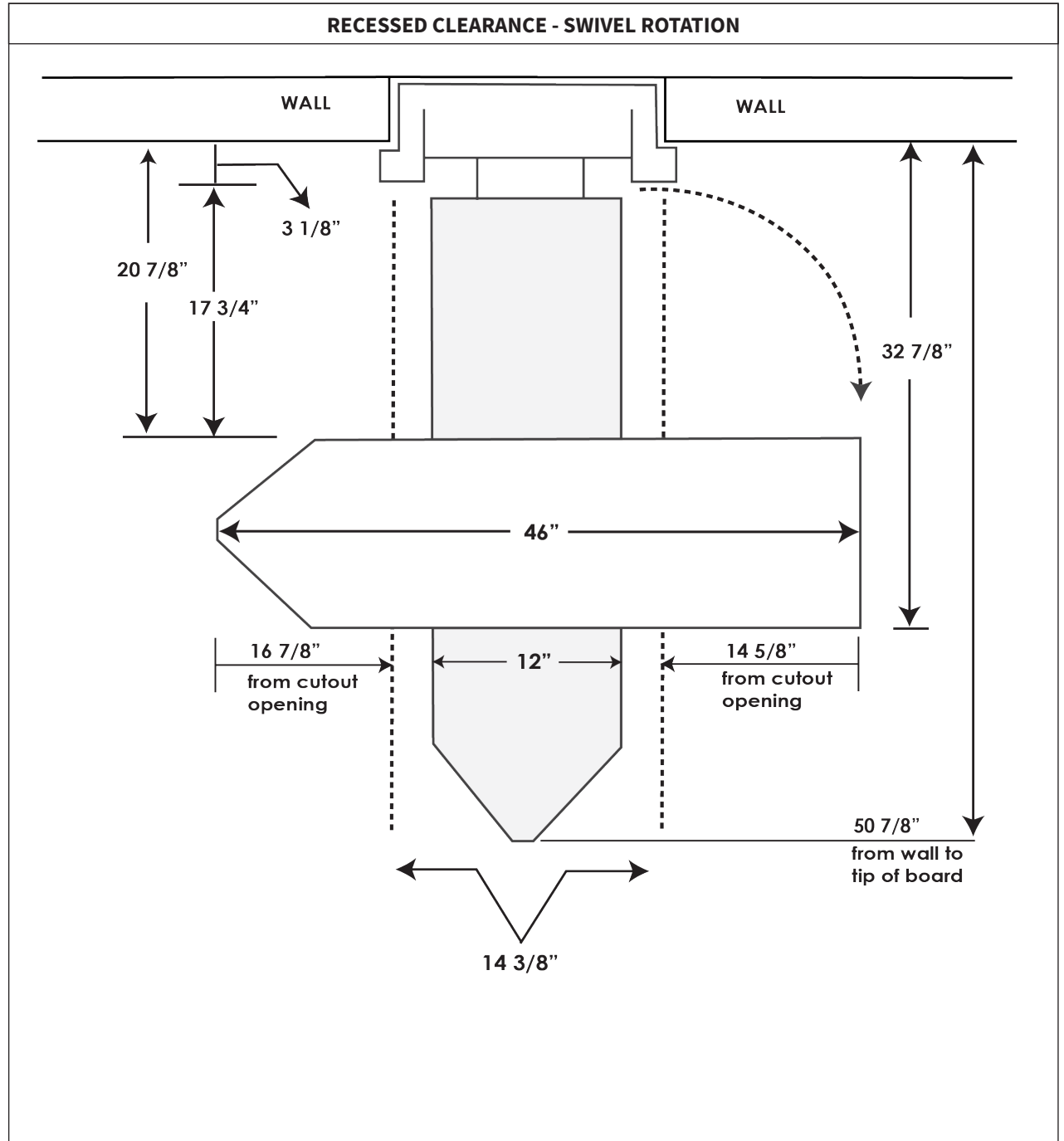
Because the ironing board needs to clear the sides of the cabinet before it can swivel, the board needs to *be able to drop down all the way to engage the swivel mechanism*, requiring 50 7/8" in front of the recessed unit, or 54 7/8" clearance for surface mount units.

### 2. Adequate space required on both sides of cabinet for board to swivel

Because the swivel mechanism is positioned under the middle portion of the ironing board, you will want to ensure proper clearance on both sides of the unit, regardless of which direction you will be swiveling the board. The minimum requirement needed to swivel the board 90° to the left is 16 7/8" to the right of the cabinet and 14 5/8" to the left. To ensure the board can swivel both directions, you will need 16 7/8" on both sides of the cabinet.

### 3. Door MUST be able to open 180°

The door needs to open flush against the wall in order for the swivel to freely turn left or right, requiring 16" on the hinge side for a flush open. Door can be hinged on either the left or right side of the ironing center.



## Items to Note:

### Electrical Requirements for AE-46

Unit requires 115/120v, 15 amp. supply line. Pigtailed are provided in the bottom of wire raceway for hookup to supply line. Make entrance into knockout provided in top of raceway through left-hand vent hole.

### Installation Types

#### *Recessed*

Placed into the wall, between 16" on center studs, protruding 3 7/8" into the room. It is recommended to attach a 2" x 4" cleat to studs, level with bottom of the opening to support cabinet when installing.

#### *Surface Mount*

Installed directly onto the wall, with no cutout, centered and anchored on secure stud. Will protrude 7 3/4" into room. Optional surface mount kit is available to finish sides of unit and recommended for complete installation.

### Recommended Standing Room Clearance

Be sure to check that you have adequate standing space (at least 24") to stand beside the ironing board to iron.

### Installation Heights

Use the provided **Installation Height Chart** on page 1 to determine your desired ironing board height, making note of the two height positions of the board. The **Desired Ironing Board Height** is the first position in which the board is automatically placed in when first lowering the board. The **Adjusted Position** is 4" higher and can be engaged after the board has been fully lowered.

### Swivel

Swivel feature allows board to turn 90° in either direction, for a full 180° swivel, with five locking positions.

### Door

Ironing center comes standard with a flat maple veneer door and a variety of additional door options. Door opens approximately 180°, flush against the wall. Please be sure to allow 16" to the side of unit for the door to open fully open.

### Hinge Side

Unit comes standard with the hinge on the right. A left side hinge can be requested when placing order.

### Unfinished Cabinet

The exterior of the cabinet is unfinished and ready to be painted or stained to match existing decor.

