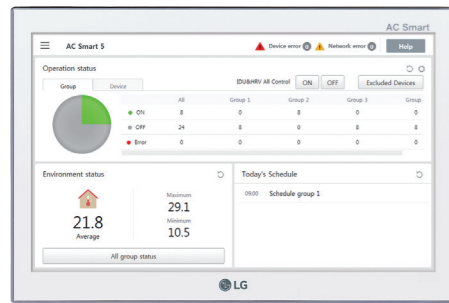


AC SMART 5 - PACS5A000

AVAILABLE FROM
MID 2018 ONWARDS

New AC Smart 5 has mobile web access and BACnet gateway function. An all-in-one solution for BMS integration up to 128 units via BACnet and Modbus protocol as well as its own smart management function with touch screen interface

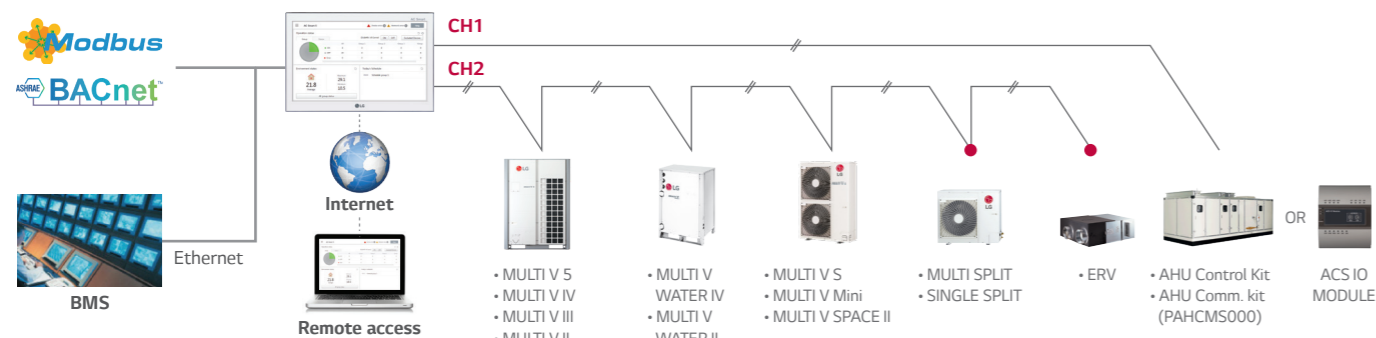


PACS5A000

Model Name	PACS5A000
Size (W x H x D, mm)	253.2 x 167.7 x 28.9
Interfaceable Products	MULTI V / ERV / ERV DX / Hydro kit / THERMA V / AHU kit / LG Chiller ¹⁾
Maximum number of units	128
Individual / Group Control	On & Off / Mode / Temperature / Fan speed
Individual Controller Lock	Temperature / Mode / Fan speed / All
Advanced Function Setting and Display ²⁾	Comfort Cooling / ODU Low Noise / ODU Defrost Mode / Comfort Level display / CO ₂ Level display (for ERV/ERV DX) / Night Time Free Cooling (for ERV/ERV DX)
Error Check	.
Slave Mode (Interlocking with higher level controller)	.
Schedule	Weekly / Monthly / Yearly / Exception day
Web Access	.
Emergency Stop & Alarm Display	.
Power Consumption Monitoring (with PDI)	.
Auto Changeover / Setback	.
Temperature Limit	.
Operation Time Limit	.
Visual Navigation	.
Operation Trend	.
Interlock Control	.
Virtual Group Control	.
ODU Capacity Control	.
Energy Navigation (with PDI)	.
Daylight Saving Time	.
ACS IO Module Interlocking	Max. 9
External IO Port	DI 2 / DO 2
BMS Integration ³⁾	BACnet IP / Modbus TCP
IPv6 Support	.

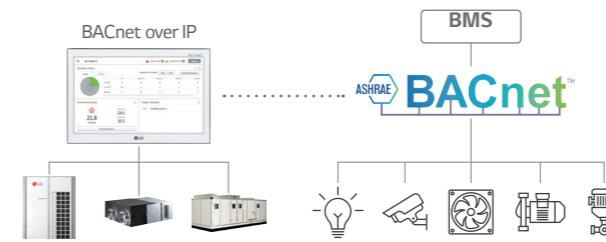
1) Chiller Option Kit(PCHLLN000) is required 2) It is only available in some products 3) For the detail point list, please refer to the installation manual

Installation Scene



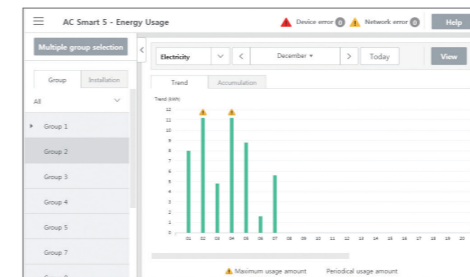
• Appropriate PI485GW installation according to PDB is necessary

Features



BMS Integration

Without additional device, AC Smart 5 provides BACnet/IP and Modbus TCP/IP interface for BMS(Building Management System) integration as well as its own management function.



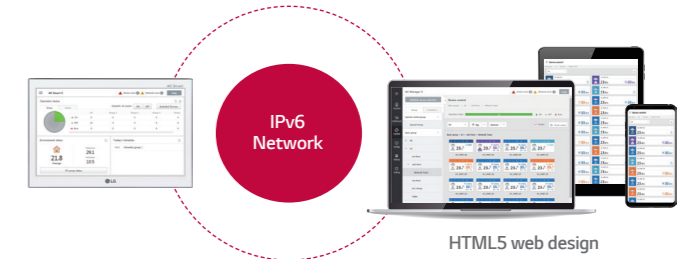
Energy Management

Energy navigation function allows air conditioners operation to be managed under the monthly plan of energy usage. By analyzing present energy consumption and comparing with the plan, overuse of system operational costs can be prevented.



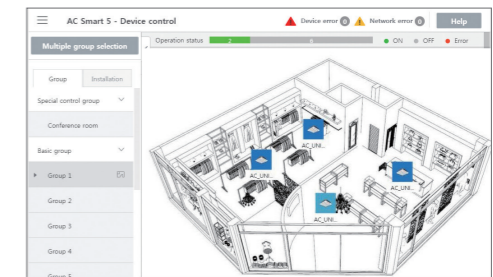
Device Interlock

Building Facility can be interlocked with LG HVAC system on the automated control logic.



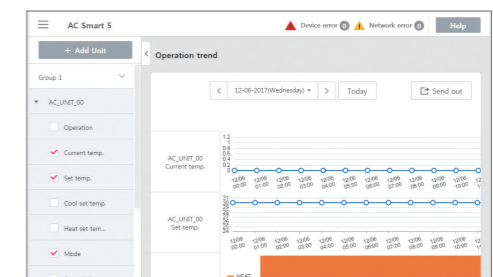
Advanced Network Accessibility

AC Smart 5 reflects the state of the art of network technology trend. IPv6(Internet Protocol version 6), which is the most recent version of the Internet Protocol, provides accessibility to the IPv6 compatible network environment. HTML5 makes the web access to AC Smart 5 easier and look good on all devices, especially for mobile.



Visualised Control

Visual navigation enables controlling and monitoring the unit on floor plan view for the intuitive management.



Operation Trend

Unit's operation status change in the past can be traced to help establishing reasonable operation plan of the site.