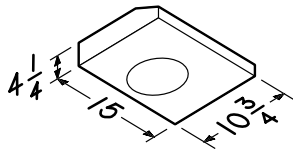
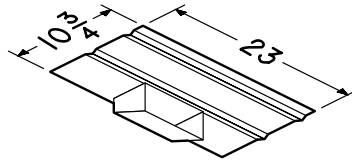


BLOWER / ROUGH-IN KITS & DUCTING ACCESSORIES

For use with
Best by Broan
K210A Series
Range Hoods

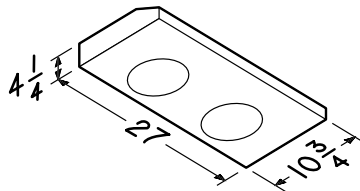
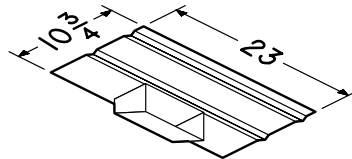
Model P5 Blower Rough-in Kit

- 500 cfm, 120 VAC, 1.8 Amps
- Interior-mounted, single-wheel design
- Attaches to rough-in plate independent of hood
- Includes rough-in kit, with flow-deviator and damper adaptor
- Uses 3 $\frac{1}{4}$ " x 10" rectangular or 8" round duct



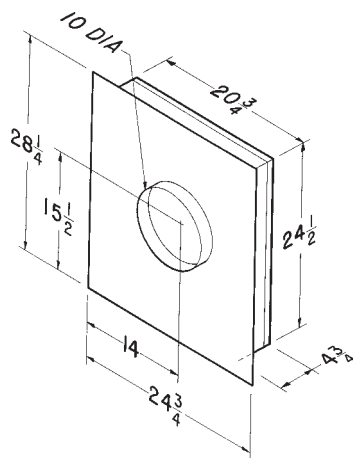
Model P8 Blower Rough-in Kit

- 850 cfm, 120 VAC, 3.4 Amps
- Interior-mounted, single-wheel design
- Attaches to rough-in plate independent of hood
- Includes rough-in kit, with flow-deviator and damper adaptor
- Uses 3 $\frac{1}{4}$ " x 10" rectangular or 8" round duct



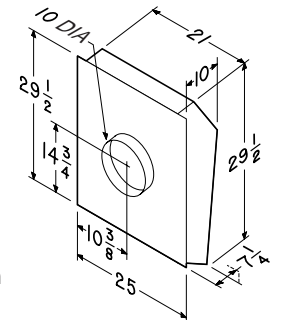
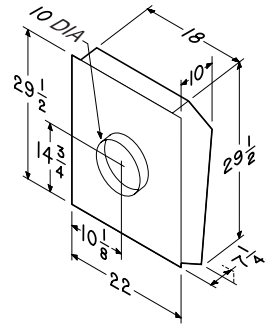
Models EB6 & EB9 Exterior Blowers

- 600/900 cfm, 120 VAC, 2.3/5.8 Amps
- Exterior-mounted, all aluminum construction
- Exterior Blower Rough-in Kit included
- Use with 10" round duct (purchase separately)



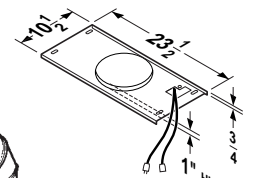
Models EB12 & EB15 Exterior Blowers

- 1200/1500 cfm, 120 VAC, 3.0/3.8 Amps
- Brushed aluminum construction
- Built-in flashing plate for roof or wall mount
- Built-in backdraft damper and birdscreen
- Easily removable cover provides quick access to blower for cleaning and servicing
- For 10" round duct
- Thermally protected, permanently lubricated, ball-bearing motor
- Speed control compatible motor
- Dynamically balanced 14" (EB12) 14 $\frac{3}{8}$ " (EB15) diameter backward-curved impeller
- Low RPM - quiet operation

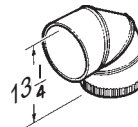


Exterior Blower Rough-in Kit

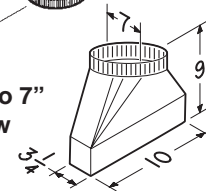
- Included with Models EB6, EB9, EB12, & EB15 Exterior Blowers



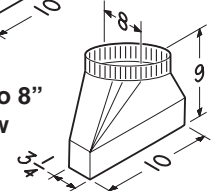
Model 418 10" Round Adjustable Elbow



Model 412 - 3 $\frac{1}{4}$ " x 10" to 7" Round Adjustable Elbow



Model 413 - 3 $\frac{1}{4}$ " x 10" to 8" Round Adjustable Elbow



Best by Broan, P.O. Box 140, Hartford, Wisconsin 53027

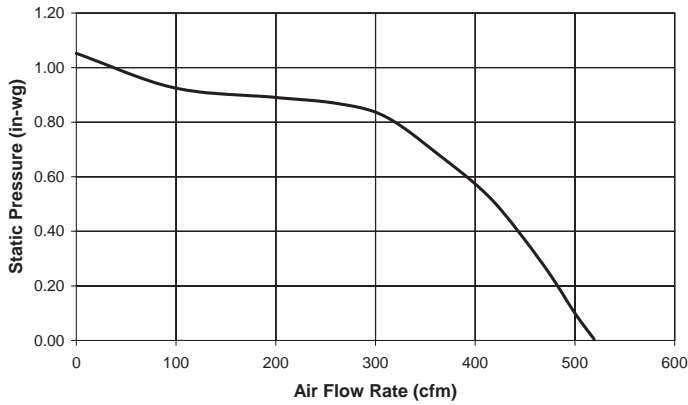
REFERENCE	QTY.	REMARKS	Project
			Location
			Architect
			Engineer
			Contractor
			Submitted By Date



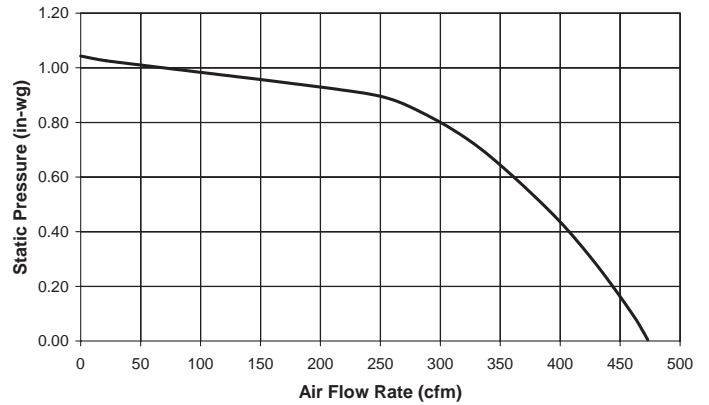
PERFORMANCE RATINGS

Blowers for use with Best by Broan K210A Series Range Hood System

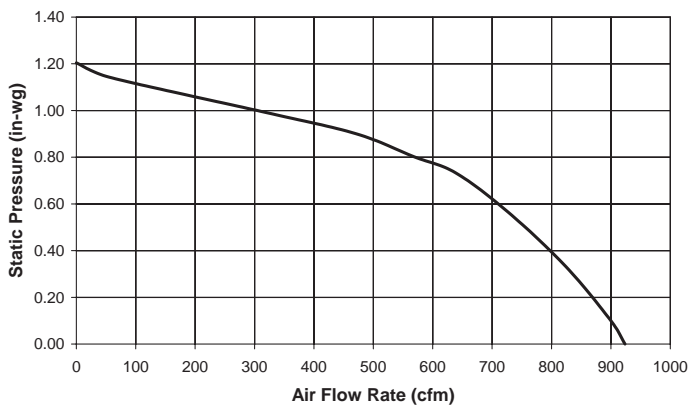
P5 (Horizontal)



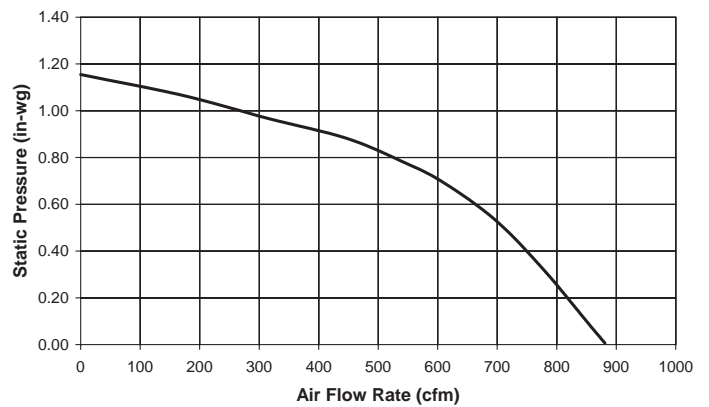
P5 (Vertical)



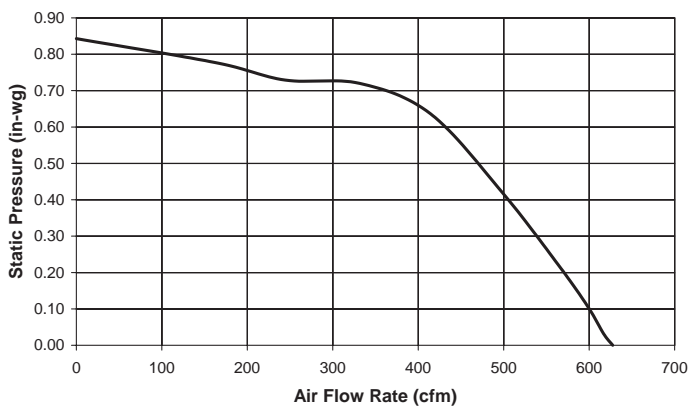
P8 (Horizontal)



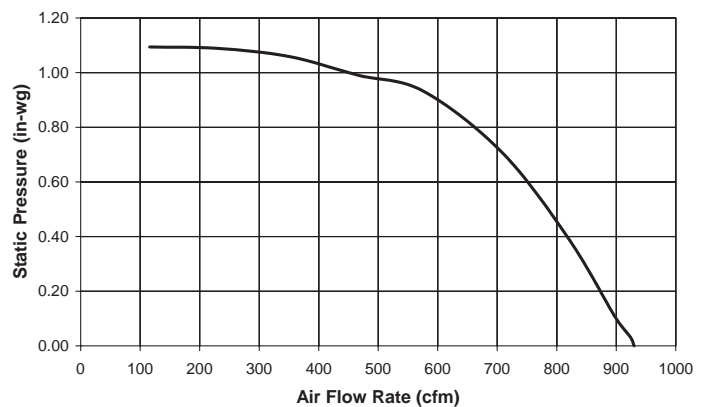
P8 (Vertical)



EB6



EB9



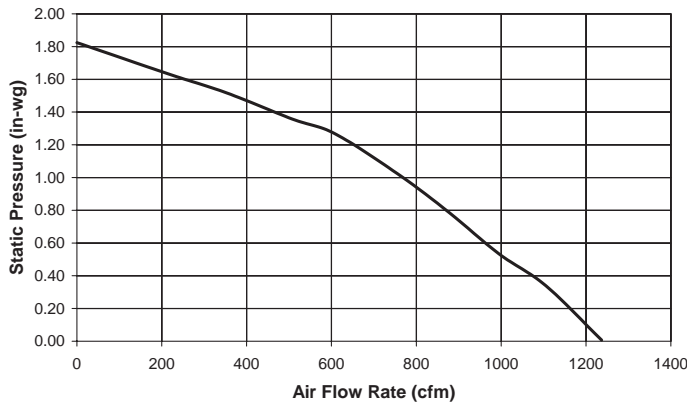
HVI-2100 CERTIFIED RATINGS comply with new testing technologies and procedures prescribed by the Home Ventilating Institute, for off-the-shelf products, as they are available to consumers. Product performance is rated at 0.1 in. static pressure, based on tests conducted in AMCA's state-of-the-art test laboratory. Sones are a measure of humanly-perceived loudness, based on laboratory measurements.



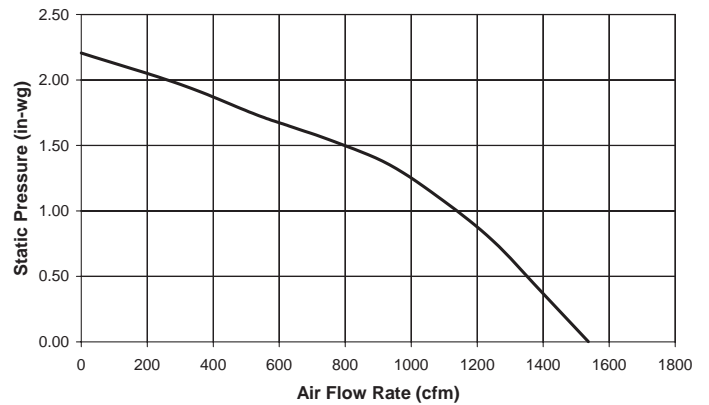
PERFORMANCE RATINGS

Blowers for use with Best by Broan K210A Series Range Hood System

EB12



EB15



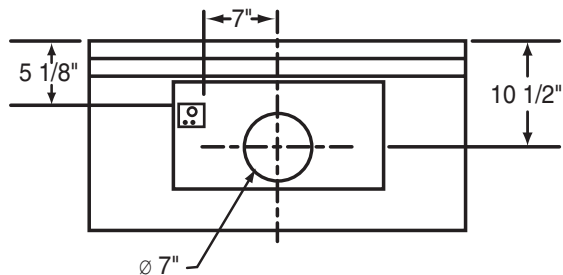
HVI-2100 CERTIFIED RATINGS comply with new testing technologies and procedures prescribed by the Home Ventilating Institute, for off-the-shelf products, as they are available to consumers. Product performance is rated at 0.1 in. static pressure, based on tests conducted in AMCA's state-of-the-art test laboratory. Sones are a measure of human-perceived loudness, based on laboratory measurements.



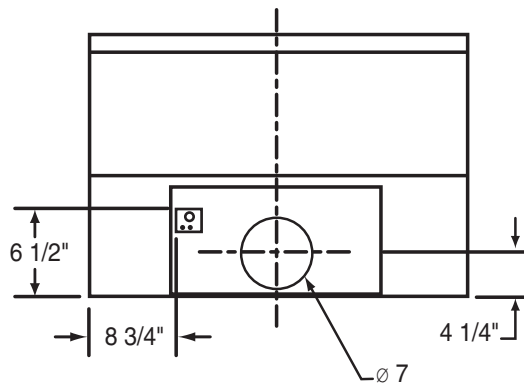
BLOWER DUCTING POSITIONS

Blowers for use with Best by Broan K210A Series Range Hood System

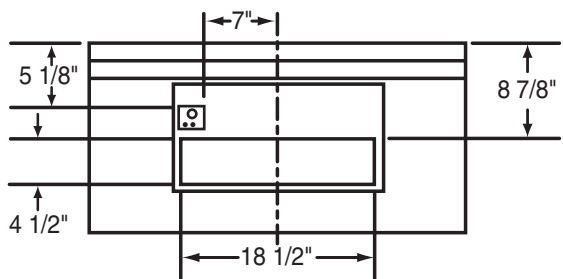
Model P6
Horizontal Outlet
- Back View-



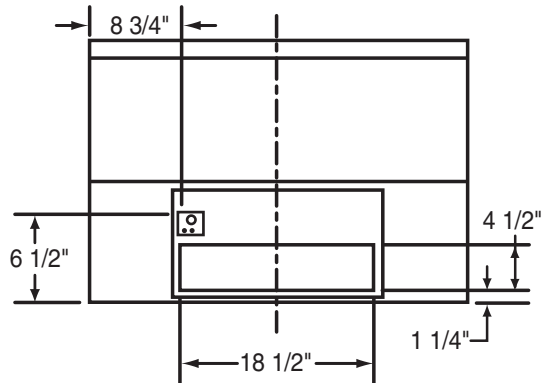
Model P6
Vertical Outlet
- Top View-



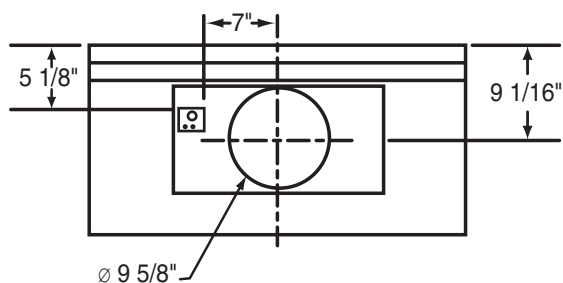
Model P12
Horizontal Outlet
- Back View-



Model P12
Vertical Outlet
- Top View-



Model EB6
Horizontal Outlet
- Back View-



Model EB9
Vertical Outlet
- Top View-

