

Your washing machine

Congratulations – You have chosen a modern, high-quality home appliance from Bosch. The washing machine features both water and energy savings.

Every machine that leaves our factory is carefully tested for function and full working condition.

Contents

Intended use	1
Cycles	1
Set cycle	3
Washing	3/4
After washing	4
Individual settings	5
Information about the indicator lights	5
Important information	5/6
Care	6
Overview of cycles	7
Maintenance	8
What to do if ...	9
Important Safety instructions	10/11

Environmental protection/ Tips for energy saving

– We recommend HE (High efficiency) detergents because they are particularly designed to deliver optimum performance from your front-loading washer. Not using HE detergent could cause problems such as oversudsing, extended cycle periods, or a decrease in wash performance.

- Utilize the maximum amount of laundry for the appropriate cycle.
- Avoid using too much detergent.
- Add detergent according to manufacturer's instruction and water hardness.
- If the laundry will be dried in a dryer afterwards, select spin speed according to the dryer manufacturer's instructions.

Intended use

- exclusively for private residential use,
- for washing machine-washable textiles in sudsy water,
- for operation using cold and hot (140°F / 60°C) tap water and conventional additives that are suitable for use in residential washing machines.

- Never leave children unattended by the washing machine!
- Keep children away from shipping carton and packaging components. Danger of suffocation from packaging components and folding cartons.
- Do not allow children to play on or in the appliance at any time; severe injury or death could result. Children should be kept a safe distance away from appliances at all times. Children should only be permitted within an appliance's vicinity if under close, constant adult supervision.
- Do not allow children's toys or other items that might encourage children to climb on the washer, to be stored on or in the washer or on shelves or in cabinets or other storage areas above or adjacent to the washer.
- Keep pets away from the washing machine!
- To reduce the risk of poisoning or chemical burns, keep all cleaning products out of the reach of children.

Cycles

Detailed cycle overview → page 7.

Regular/Cotton	} sturdy fabrics
Permanent press	
KIDSCARE	} hand washable textiles
Sanitary	
Hand wash	delicate fabrics
Delicates	drain water
Drain	extra spin
Spin	extra rinse with spin
Refresh	

Preparation

Install machine correctly according to separate installation instructions.

Check machine

Never start a damaged machine! Contact customer service!

Open water faucets

Plug in the washer's electrical cord

With dry hands only! Take hold of the plug only!

Before washing for the first time, run a cleaning cycle with no laundry in the drum. → page 5

Sorting and loading laundry

Follow care instructions of the manufacturer! According to the care instructions tag. Sort laundry according to type, color, soiling and temperature. Do not exceed maximum load.

Pay attention to important information! → page 5, 6! Fill with large and small items of laundry! Close loading door. Do not catch pieces of laundry between the door and the rubber seal.

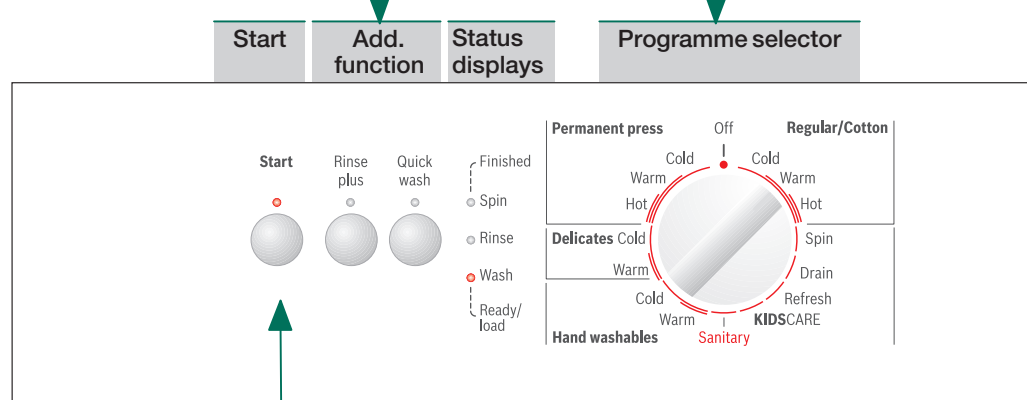
Add detergent and laundry additives

Meter accordingly: Washing amount, soiling, water hardness (ask your water supply company) and manufacturer's instructions. Pour liquid detergent into the appropriate dispenser and place in the drum.

- Dispenser I: Do not use!
- Dispenser II: Fabric softener, starch
- Dispenser III: Detergent for main wash, water softener, spot remover
- Thick fabric softeners or stiffeners should be thinned with water. Prevents clogging.
- We recommend HE (High Efficiency) detergents.

Set and adjust cycle

For additional functions and option buttons see individual settings, → page 5.



Cycle selector for turning on and off the machine and for selecting the cycle. Possible to turn in both directions.

Select Start

Washing

Detergent drawer with dispensers I, II, III

Loading door

Control panel

Door handle

Service door

Washing

Removing laundry

Open washing machine door and remove laundry. Remove any existing foreign objects – Risk of rust.

Close water faucets

Switch off

Set cycle selector to Off.

End of programme when ...

... indicator light Spin flashes.

Change cycle ...

If you have mistakenly selected a wrong cycle:

- Reselect cycle.
- Select Start within 3 seconds or the washer will automatically start the draining the drum.

Restart immediately after new programme selection to avoid draining phase.

...or stop cycle

- For cycles with high temperature:
 - Cool down wash: Select Refresh.
 - Select Start.
- For cycles with lower temperature:
 - Select Spin or Drain.
 - Select Start.

Individual settings

Cycle settings for extra cycles refer also to cycle overview

Refresh For rinsing unsoiled laundry (e.g. swimwear) and for removing detergent residue from fabric. Ends with a spin cycle.

Additional functions see also programme overview

Rinse plus Additional rinse cycle. For areas with very soft water. Also for improved rinsing.

Quick wash Reduced wash time – only 2 rinse cycles. Suited for slightly soiled laundry. Recommended load: up to ½ load.

Start To start or interrupt the cycle.

Information to indicator lights

Indicator lights for status displays and/or buttons flash:

Indicator lights Rinse and Wash flash	Close the washer door properly. Avoid catching laundry items in the door.
Indicator lights Spin and Rinse flash	Clean detergent-solution pump (page 8), outlet pipe/drainage hose blocked.
Indicator lights Spin and Wash flash	Turn on the tap, supply hose kinked/jammed; clean filter (page 8), water pressure too low.
Indicator light Rinse flashes	Washer motor failure. Call customer service!
All indicator lights flash	Turn off the tap and call customer service.

Important information

Taking care of laundry and machine

- Empty pockets.
- Check the laundry for any metal objects (such as pens, paper clips, keys, etc.).
- Wash very delicate or small items (like baby socks) in a mesh bag.
- Close zippers, snaps, fasteners.
- Brush sand out of pockets and cuffs.
- Remove curtain slides or enclose in net bag.
- Remove curtain rings or tie them up in a net bag.

Before washing for the first time

Do not put any laundry in the washer drum! Turn on the tap, fill approx. 1 litre of water and then pour ½ measuring cup of detergent into dispenser II. Set programme selector to Regular/Cotton Hot cycle and select Start. At the end of the programme set the programme selector to Off.

Important information

Different types of soiled laundry

lightly soiled	Wash new items separately. Pretreat stains if necessary.
heavily soiled	Pretreat stains if necessary. Add less laundry. Pretreat stains if necessary.

Starching

Do not use fabric softener in wash. Starching with liquid starch possible in all wash cycles. Add starch in fabric softener dispenser according to manufacturer's instructions.

Dyeing / Removing color

Dyeing fabric in the washer is not recommended. Salt in the dye may corrode the stainless steel components of the washer drum. More than household quantities of dyeing increase the risk. If you choose to use dye in your washer, follow the instructions provided by the dye manufacturer. Do not remove color from laundry in the washing machine.

Care

Machine housing, control panel

- Wipe with a soft, damp cloth.
- Do not use abrasive cloths or sponges. Do not use abrasive cleaners such as stainless steel cleaner.
- Immediately remove any detergent or agent residue.
- Do not clean the appliance with pressurized water, such as from a water jet or pressure washer.

Clean the detergent drawer ...

... if it contains detergent or fabric softener residue.

- Pull out, depress insert, completely remove.
- Remove the powder detergent insert.
- Clean the insert with running water and thoroughly towel dry.
- Close and lock the cover (place cylinder on guide pin). Insert detergent drawer.
- Insert detergent drawer.

Leave the detergent drawer partially open enough that any remaining residual water will be allowed to dry.

Drum

Leave loading door open so that the drum can dry out. Rust stains – use chlorine-free cleaning agent, not steel wool.

Descaling

No washing in the machine! Provided that you use the correct type of detergent, it is not necessary to descale the washing machine. However if the appliance has to be descaled, please follow the instructions provided by the descaling agent manufacturer.

Programs	Temperature	max. Load up to*	Type of washing	Options; information
Regular/Cotton	Cold, Warm, Hot	full load	Sturdy fabric, cotton or linen fabric that withstands very hot water	Rinse plus, Quick wash
Sanitary	Extra Hot	full load		Rinse plus, Quick wash
KIDSCARE	Hot	1/2 load	Cotton, linen, synthetic or blended fabrics	Rinse plus, Quick wash; reduced rinse and final spin cycle
Permanent press	Cold, Warm, Hot	1/2 load	For delicate, washable textiles, e.g. made of cotton, satin, synthetic fibers or blended fabrics (e.g. curtains); bulky items (e.g. comforters) can be washed with this cycle	Rinse plus, Quick wash; reduced rinse and final spin cycle
Delicates	Cold, Warm	1/3 load	Hand washable textiles	Rinse plus, Quick wash; no spin between rinse cycles, reduced final spin cycle
Hand wash	Cold, Warm			also suitable for hand-washable silk
Extra cycles				reduced final spin cycle

9000 347 368
0610
WAE20060UC

BSH Home Appliances
5551 Mc Fadden Ave
Huntington Beach, CA 92649

Further information and a selection of our products can be found on our Web site:
www.boschappliances.com

Maintenance

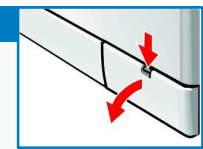


- Risk of scalding!
Allow detergent solution to cool down!
- Turn off the faucet!

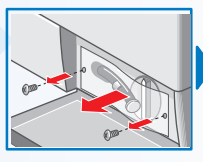
Suds discharge pump

Set cycle selector to **Off**, unplug the washer.

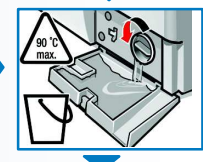
1. Open and remove service door.



2. Remove screws holding cover in place. Remove begins transparent plastic cover.



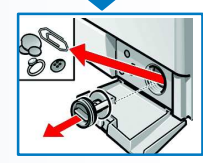
3. Carefully unscrew pump cover until the water suds begins to run out. When the service door is half full, screw back the pump cover and empty the service door.



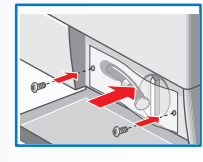
4. Carefully unscrew the pump cover (residual water).

5. Clean the interior, pump cover thread and pump housing (fan impeller in the detergent-solution pump must rotate).

6. Reinsert and screw on pump cover.



7. Place transparent plastic cover and secure with screws provided.



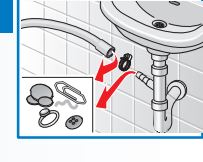
8. Insert and close service door.

To prevent unused detergent from flowing into the outlet during the next wash: Pour 1 quart (approx. 1 liter) of water into dispenser II and select the **Drain** cycle.

Drainage hose at the siphon

Set cycle selector to **Off**, pull out the mains plug.

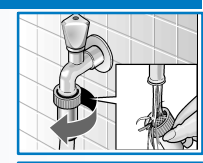
1. Loosen the hose clamp, carefully remove the drainage hose (residual water).
2. Clean the drainage hose and siphon connecting piece.
3. Reattach the drainage hose and secure the connection with the hose clamp.



Filter screens in water supply hoses

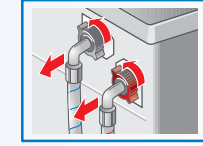
Release water pressure in the supply hoses:

1. Close water faucet!
2. Select desired cycle (**except** for Spin/Drain).
3. Select **Start**. Let cycle run approx. 40 seconds.
4. Set cycle selector to **Off**. Unplug from main power supply!

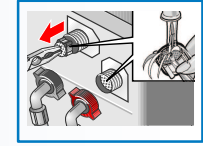


Cleaning screen:

1. Remove hose from water faucet.
- Rinse the strainers under flowing water.
- Remove hoses on the rear, take out screen with pliers and clean.



2. Replace hose and check for leaks.



* For best results it is recommended to load the drum depending on the fabric type:
full load: Cottons and Linens; 1/2 load: Permanent Press, Synthetic Blends and Poly Knits; 1/3 load: Wool, Delicates, Silk

What to do if ...

- Water is running out.
 - Fasten drain hose correctly / replace.
 - Tighten screw connection of the supply hose.
- Water not entering washer.. Detergent not rinsed.
 - **Start** not selected?
 - Water faucet not turned on?
 - Screen possibly clogged? Clean screen -> page 8.
 - Supply hose kinked or pinched?
 - Safety function active. Wait approx. 2 minutes.
- The loading door will not open.
 - **Start** selected?
 - Loading door closed?
- Programm is changed and water is drained.
 - Not a fault - **Start/Pause** ⇄ not selected immediately? Water is drained to avoid water flowing out of open door. Select **Start/Pause** ⇄ to continue.
- Sudsy water is not pumped out.
 - Clean pump -> page 8.
 - Clean drain pipe and/or drain hose.
- Water cannot be seen in drum.
 - No malfunction - Water is below visible area.
- Spin results not satisfactory.
 - Wash small and large items together.
- Spinning several times.
 - No malfunction - the automatic load balancing system is attempting to balance the load.
- Dispenser ⌘ not completely rinsed out.
 - Remove dispenser. Clean detergent dispenser and liquid detergent insert -> page 8.
- Odor in washing machine.
 - Perform **Regular/Cotton Hot** cycle without adding laundry. Also use detergent.
- Foam comes out of the dispenser drawer.
 - Too much detergent added? Mix 1 tablespoon fabric softener with 1 pt (1/2 liter) water and pour into dispenser II of the detergent drawer (*not with outdoor fabrics!*).
 - Too much soap or non - HE soap used? Mix 1 tablespoon fabric softener with 1 pt (1/2 liter) water and pour into dispenser II of the detergent drawer (*not with outdoor fabrics!*).
 - Reduce amount of detergent used for future wash cycles.
- Strong odor, vibrations and "walking" during spinning.
 - Are machine feet fixed? Secure machine feet -> *Installation instructions* page 5.
 - Shipping lock removed? Remove shipping lock -> *Installation instructions* page 3.
- Display lamps not functioning during operation.
 - Power outage?
 - Fuse blown? Flip / replace fuse.
 - If the malfunction happens repeatedly, call customer service.
- Cycle runs longer than usual.
 - No malfunction - Imbalance control system equalizes imbalance by frequent distribution of the wash.
 - No malfunction - Foam control system is active and additional rinse cycle has been started.
- Detergent residue on the laundry.
 - Some phosphate-free detergents contain water insoluble residues.
 - Select **Refresh** or brush off the laundry after washing.
- If a malfunction cannot be repaired by yourself or if a repair is necessary:
 - Set cycle selector to **Off** and unplug the washer's electrical cord.
 - Close water faucet and call customer service -> *Installation instruction*.

Important Safety instructions



- WARNING**
- To reduce the risk of fire, electric shock, serious injury or death when using your washing machine, follow basic precautions, including the following:
- BOSCH washers are provided with an Operating, Care and Installation Instructions Manual. Read and understand all instructions before using the washing machine.
 - Do not wash articles that have been previously cleaned, washed, soaked, or spotted with gasoline, dry cleaning solvents, other flammable or explosive substances as they give off vapors that could ignite or explode. This includes articles that have been exposed to Naptha.
 - Do not add gasoline, dry cleaning solvents, or other flammable or explosive substances to the wash. Wash laundry in water only. Flammable or explosive substances may give off vapors that could ignite or explode.
 - Under certain conditions hydrogen gas may be produced in a hot water system that has not been used for 2 weeks or more. HYDROGEN GAS IS EXPLOSIVE. If the hot water system has not been used for this length of time, turn on all hot water faucets and let the water flow out of each faucet for several minutes before using the washing machine. This will release any accumulated hydrogen gas. As the gas is flammable, do not smoke or use an open flame while carrying out this procedure.
 - Before the appliance is removed from service or discarded, remove the door and the power cord/plug.
 - Do not reach into the appliance if the wash drum is moving.
 - Do not install or store this appliance where it will be exposed to the weather.
 - Do not use bleach. Hazardous fumes can form.
 - Do not tamper with the controls.
 - Do not repair or replace any part of the appliance or attempt any service unless specifically recommended in the user maintenance instructions or in published user repair instructions that you understand and have the skills to carry out.
 - Always unplug the washing machine from the power supply before attempting any service. Disconnect the power cord by grasping the plug, not the cord.
 - To reduce the risk of fire, clothes, cleaning rags, mop heads and the like which have traces of any flammable substance, such as vegetable oil, cooking oil, petroleum based oils or distillates, waxes, fats, etc., must not be placed in the washing machine. These items may contain flammable substances which, even after washing, may smoke or catch fire.
 - Do not machine wash fiberglass materials (such as curtains and window coverings that use fiberglass materials). Small particles may remain in the washing machine and stick to fabrics in subsequent wash loads causing skin irritation.
 - When children become old enough to operate the appliance, it is legal responsibility of the parents or legal guardians to ensure that they are instructed in safe practices by qualified persons.
 - Keep pets away from the washing machine.
 - Do not insert/pull out the power plug with wet hands.
 - Do not touch the door if washing at high temperatures.
 - Use caution when draining hot water.
 - **Do not allow anyone to climb, lean or hang on any part of the washer including any protruding components such as the appliance door or a pull-out shelf.**
 - Do not sit or stand on the top of the washing machine.
 - To reduce the risk of fire or electrical shock, DO NOT use an extension cord or an adapter to connect the washing machine to the power supply.
 - The washing machine must only be used for its intended purpose.

Important Safety instructions

- Always follow the fabric care instructions recommended by the clothing manufacturer.
 - Do not use the washing machine if it has a worn power cord or loose plug. Contact an authorized service agent.
 - Make sure that all washer water connections have shut-off valves and are readily accessible. Close the washing machine water shut-off valve(s) at the end of each wash day.
 - Check the fill hose connections on a regular basis to ensure that they are tight and not leaking.
 - Always read and follow the instructions of the manufacturer of the detergent(s), cleaning aid(s), fabric softener(s) and static eliminator(s) which you are using. Heed all warnings and precautions.
 - Store all laundry chemicals and aids in a cool dry place according to the manufacturers' instructions.
 - To reduce the risk of poisoning or chemical burns, keep all cleaning products out of the reach of children.
 - Do not operate the washing machine if any guards, panels and/or fasteners except transport fixing bolts have been removed.
 - Do not operate the washing machine if parts are missing or broken.
 - Do not bypass any safety devices.
 - To avoid floor damage and mold growth, do not let spills or splashes cause standing water around or under the appliance.
 - Do not operate this washing machine until you are sure that:
 - a. the washing machine has been installed according to the INSTALLATION INSTRUCTIONS.
 - b. all water, drain, power and grounding connections are in compliance with all local regulations and/or other applicable regulations and requirements.
 - Failure to install, maintain and/or operate the washing machine according to the manufacturer's instructions may result in injury and/or damage.
 - Check the fill hose connections on a regular basis to ensure that they are tight and not leaking.
 - Removing any panel, including the service panel in the front can expose sharp edges and points, electrical connections and hot surfaces.
 - To avoid damage to the door, do not push against the door when moving the unit. Precautions should be taken to avoid damage to the floor.
 - The water connections should be made and tested before electrical power is applied to the machine.
- Notes:**
- The IMPORTANT SAFEGUARDS and WARNINGS indicated in this manual do not cover all possible conditions which may occur. Common sense, caution and care must be exercised when installing, maintaining or operating the washing machine.
 - Always contact your dealer, distributor, service agent or the manufacturer about any problems or conditions that you do not understand.
- GROUNDING INSTRUCTIONS**
- This appliance must be grounded. In the event of a malfunction or breakdown, grounding will reduce the risk of electric shock by providing a path of least resistance for the electric current. This appliance is equipped with a cord that has an equipment-grounding conductor and a grounding plug. The plug must be plugged into an appropriate outlet that is properly installed and grounded in accordance with all local codes and ordinances.
 - Improper connection of the equipment grounding conductor can result in electric shock. Connect to individual Branch Circuit. Check with a qualified technician or a licensed electrician if you are in doubt as to whether the washer is properly grounded. DO NOT modify the plug provided with the appliance - if it will not fit the outlet have a proper outlet installed by a qualified electrician.
- KEEP THESE INSTRUCTIONS FOR FUTURE REFERENCE**
- In case of change of ownership, manual should be conveyed with the washer.**
- SAVE THESE INSTRUCTIONS.**



Washing machine

Operating instructions en-us



WARNING - to reduce the risk of fire, electric shock, or injury to persons, read the **Important Safety instructions** before operating this appliance. Also follow the separate installation instructions. Follow the safety instructions on page 10,11!

Your washing machine

Congratulations – You have chosen a modern, high-quality home appliance from Bosch. The washing machine features both water and energy savings.

Every machine that leaves our factory is carefully tested for function and full working condition.

Contents

	Page
■ Intended use	1
■ Cycles	1
■ Set cycle	3
■ Washing	3/4
■ After washing	4
■ Individual settings	5
■ Information about the indicator lights	5
■ Important information	5/6
■ Care	6
■ Overview of cycles	7
■ Maintenance	8
■ What to do if	9
■ Important Safety instructions	10/11



Environmental protection/ Tips for energy saving

- We recommend **HE (High efficiency) detergents** because they are particularly designed to deliver optimum performance from your front-loading washer. **Not using HE detergent could cause problems such as oversudsing, extended cycle periods, or a decrease in wash performance.**
- Utilize the maximum amount of laundry for the appropriate cycle.
- Avoid using too much detergent.
- Add detergent according to manufacturer's instruction and water hardness.
- If the laundry will be dried in a dryer afterwards, select spin speed according to the dryer manufacturer's instructions.

Intended use

- exclusively for private residential use,
 - for washing machine-washable textiles in sudsy water,
 - for operation using cold and hot (140°F / 60°C) tap water and conventional additives that are suitable for use in residential washing machines.
- !**
- Never leave children unattended by the washing machine!
 - Keep children away from shipping carton and packaging components. Danger of suffocation from packaging components and folding cartons.
 - Do not allow children to play on or in the appliance at any time; severe injury or death could result. Children should be kept a safe distance away from appliances at all times. Children should only be permitted within an appliance's vicinity if under close, constant adult supervision.
 - Do not allow children's toys or other items that might encourage children to climb on the washer, to be stored on or in the washer or on shelves or in cabinets or other storage areas above or adjacent to the washer.
 - Keep pets away from the washing machine!
 - To reduce the risk of poisoning or chemical burns, keep all cleaning products out of the reach of children.

Preparation

! Install machine correctly according to separate installation instructions.

Check machine

! Never start a damaged machine! Contact customer service!

Open water faucets

Plug in the washer's electrical cord

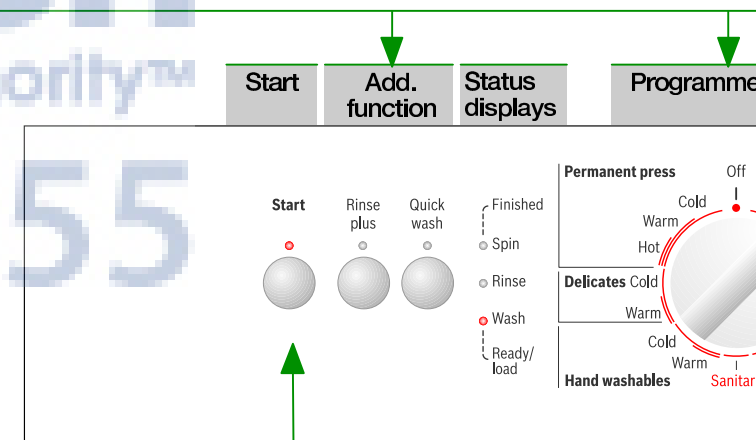
! With dry hands only!
Take hold of the plug only!



Cycles

Detailed cycle overview → page 7.

Regular/Cotton ..	} sturdy fabrics
Permanent press	
KIDSCARE	
Sanitary	
Hand wash	hand washable textiles
Delicates	delicate fabrics
Drain	drain water
Spin	extra spin
Refresh	extra rinse with spin



Before washing for the first time, run a cleaning cycle with no laundry in the drum. -> page 5

Sorting and loading laundry

Follow care instructions of the manufacturer! According to the care instructions tag. Sort laundry according to type, color, soiling and temperature. Do not exceed maximum load.

Pay attention to important information! -> page 5,6!

Fill with large and small items of laundry! Close loading door. Do not catch pieces of laundry between the door and the rubber seal.

Add detergent and laundry additives

Meter accordingly: Washing amount, soiling, water hardness (ask your water supply company) and manufacturer's instructions. Pour liquid detergent into the appropriate dispenser and place in the drum.

- Dispenser I:** Do not use!
 - Dispenser ☼:** Fabric softener, starch
 - Dispenser II:** Detergent for main wash, water softener, spot remover
- Thick fabric softeners or stiffeners should be thinned with water. Prevents clogging. We recommend **HE (High Efficiency)** detergents.

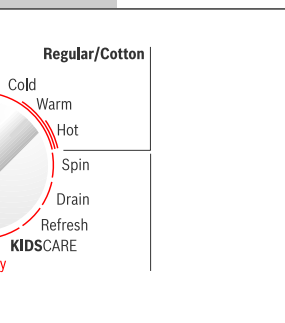
Set and adjust cycle

For additional functions and option buttons see individual settings, -> page 5.

i Cycle selector for turning on and off the machine and for selecting the cycle. Possible to turn in both directions.

Select Start

Cycle selector



Washing

Detergent drawer with dispensers I, II, ☼

Loading door

Control panel

Door handle

Service door



Removing laundry

Open washing machine door and remove laundry. Remove any existing foreign objects – Risk of rust.

Close water faucets

Switch off

Set cycle selector to **Off**.

End of programme when ...

... indicator light **Spin** flashes.

Change cycle ...

If you have mistakenly selected a wrong cycle:

- Reselect cycle.
- Select **Start** within 3 seconds or the washer will automatically start the draining the drum.

i Restart immediately after new programme selection to avoid draining phase.

...or stop cycle

For cycles with high temperature:

- Cool down wash: Select **Refresh**.
- Select **Start**.

For cycles with lower temperature:

- Select **Spin** or **Drain**.
- Select **Start**.



Individual settings

Cycle settings for extra cycles refer also to cycle overview

Refresh For rinsing unsoiled laundry (e.g. swimwear) and for removing detergent residue from fabric. Ends with a spin cycle.

Additional functions see also programme overview

Rinse plus Additional rinse cycle. For areas with very soft water. Also for improved rinsing.

Quick wash Reduced wash time – only 2 rinse cycles. Suited for slightly soiled laundry. Recommended load: up to ½ load.

Start

To start or interrupt the cycle.

Information to indicator lights

Indicator lights for status displays and/or buttons flash:

Indicator lights **Rinse and Wash flash** Close the washer door properly. Avoid catching laundry items in the door.

Indicator lights **Spin and Rinse flash** Clean detergent-solution pump (page 8), outlet pipe/drainage hose blocked.

Indicator lights **Spin and Wash flash** Turn on the tap, supply hose kinked/jammed; clean filter (page 8), water pressure too low.

Indicator light **Rinse** flashes Washer motor failure. Call customer service!

All indicator lights flash Turn off the tap and call customer service.



Important information



Taking care of laundry and machine

- Empty pockets.
- Check the laundry for any metal objects (such as pens, paper clips, keys, etc.).
- Wash very delicate or small items (like baby socks) in a mesh bag.
- Close zippers, snaps, fasteners.
- Brush sand out of pockets and cuffs.
- Remove curtain slides or enclose in net bag.
- Remove curtain rings or tie them up in a net bag.



Before washing for the first time

Do not put any laundry in the washer drum! Turn on the tap, fill approx. 1 litre of water and then pour ½ measuring cup of detergent into dispenser II. Set programme selector to **Regular/Cotton Hot** cycle and select **Start**.

At the end of the programme set the programme selector to **Off**.



Important information



Different types of soiled laundry

lightly soiled	Wash new items separately. Pretreat stains if necessary.
heavily soiled	Pretreat stains if necessary. Add less laundry. Pretreat stains if necessary.



Starching

Do not use fabric softener in wash

Starching with liquid starch possible in all wash cycles. Add starch in fabric softener dispenser according to manufacturer's instructions.



Dyeing / Removing color

Dyeing fabric in the washer is not recommended. Salt in the dye may corrode the stainless steel components of the washer drum. More than household quantities of dyeing increase the risk.

If you choose to use dye in your washer, follow the instructions provided by the dye manufacturer.

Do not remove color from laundry in the washing machine.

Care



- Risk of electric shock! Before beginning any maintenance, unplug the washer's electric cord!
- Risk of explosion! No solvents!



Machine housing, control panel

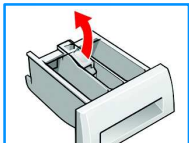
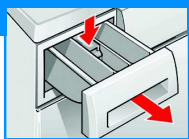
- Wipe with a soft, damp cloth.
- Do not use abrasive cloths or sponges. Do not use abrasive cleaners such as stainless steel cleaner.
- Immediately remove any detergent or agent residue.
- Do not clean the appliance with pressurized water, such as from a water jet or pressure washer.



Clean the detergent drawer ...

... if it contains detergent or fabric softener residue.

1. Pull out, depress insert, completely remove.
2. Remove the powder detergent insert.
3. Clean the insert with running water and thoroughly towel dry.
4. Close and lock the cover (place cylinder on guide pin).
5. Insert detergent drawer.



Leave the detergent drawer partially open enough that any remaining residual water will be allowed to dry.



Drum

Leave loading door open so that the drum can dry out.

Rust stains – use chlorine-free cleaning agent, not steel wool.



Descaling No washing in the machine!

Provided that you use the correct type of detergent, it is not necessary to descale the washing machine. However if the appliance has to be descaled, please follow the instructions provided by the descaling agent manufacturer.

Overview of cycles

see also -> page 1

Programs	Temperature	max. Load up to:*	Type of washing	Options; information
Regular/Cotton	Cold, Warm, Hot	full load	Sturdy fabric, cotton or linen fabric that withstands very hot water	Rinse plus, Quick wash
Sanitary	Extra Hot			Rinse plus, Quick wash
KIDSCARE	Hot			Rinse plus, Quick wash
Permanent press	Cold, Warm, Hot	1/2 load	Cotton, linen, synthetic or blended fabrics	Rinse plus, Quick wash; reduced rinse and final spin cycle
Delicates	Cold, Warm	1/3 load	For delicate, washable textiles, e.g. made of cotton, satin, synthetic fibers or blended fabrics (e.g. curtains); bulky items (e.g. comforters) can be washed with this cycle	Rinse plus, Quick wash; no spin between rinse cycles, reduced final spin cycle
Hand wash	Cold, Warm		Hand washable textiles	also suitable for hand-washable silk; reduced final spin cycle
Extra cycles				Drain, Spin, Refresh

i Cycle times are optimized for lightly soiled fabric. For heavier soiled fabrics reduce load size.

* For best results it is recommended to load the drum depending on the fabric type:

full load: Cottons and Linens; 1/2 **load:** Permanent Press, Synthetic Blends and Poly Knits; 1/3 **load:** Wool, Delicates, Silk

Further information and a selection of our products can be found on our Web site:
www.boschappliances.com

BSH Home Appliances
5551 Mc Fadden Ave.
Huntington Beach, CA 92649

9000 347 368
0610
WAE20060UC

Maintenance



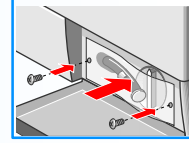
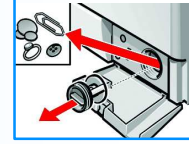
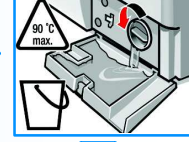
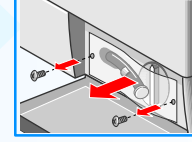
- Risk of scalding!
Allow detergent solution to cool down!
- Turn off the faucet!



Suds discharge pump

Set cycle selector to **Off**, unplug the washer.

- Open and remove service door.
- Remove screws holding cover in place. Remove begins transparent plastic cover.
- Carefully unscrew pump cover until the water suds begins to run out. When the service door is half full, screw back the pump cover and empty the service door.
Repeat steps until **all** the detergent solution has run out.
- Carefully unscrew the pump cover (residual water).
- Clean the interior, pump cover thread and pump housing (fan impeller in the detergent-solution pump must rotate).
- Reinsert and screw on pump cover.
- Place transparent plastic cover and secure with screws provided.
- Insert and close service door.



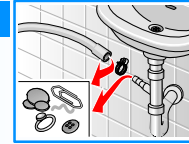
To prevent unused detergent from flowing into the outlet during the next wash: Pour 1 quart (approx. 1 liter) of water into dispenser II and select the **Drain** cycle.



Drainage hose at the siphon

Set cycle selector to **Off**, pull out the mains plug.

- Loosen the hose clamp, carefully remove the drainage hose (residual water).
- Clean the drainage hose and siphon connecting piece.
- Reattach the drainage hose and secure the connection with the hose clamp.



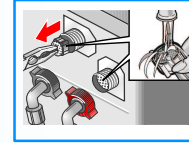
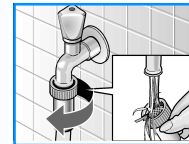
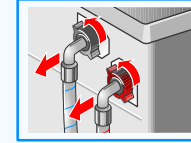
Filter screens in water supply hoses

Release water pressure in the supply hoses:

- Close water faucet!
- Select desired cycle (**except** for Spin/Drain).
- Select **Start**. Let cycle run approx. 40 seconds.
- Set cycle selector to **Off**. Unplug from main power supply!

Cleaning screen:

- Remove hose from water faucet.
 - Rinse the strainers under flowing water.
 - Remove hoses on the rear, take out screen with pliers and clean.
- Replace hose and check for leaks.



What to do if ...

Water is running out.	<ul style="list-style-type: none"> – Fasten drain hose correctly / replace. – Tighten screw connection of the supply hose.
Water not entering washer.. Detergent not rinsed.	<ul style="list-style-type: none"> – Start not selected? – Water faucet not turned on? – Screen possibly clogged? Clean screen → <i>page 8</i>. – Supply hose kinked or pinched?
The loading door will not open.	<ul style="list-style-type: none"> – Safety function active. Wait approx. 2 minutes.
Cycle does not start.	<ul style="list-style-type: none"> – Start selected? – Loading door closed?
Programm is changed and water is drained.	<ul style="list-style-type: none"> – Not a fault – Start/Pause ⇄ not selected immediately? Water is drained to avoid water flowing out of open door. Select Start/Pause ⇄ to continue.
Sudsy water is not pumped out.	<ul style="list-style-type: none"> – Clean pump → <i>page 8</i>. – Clean drain pipe and/or drain hose.
Water cannot be seen in drum.	<ul style="list-style-type: none"> – No malfunction – Water is below visible area.
Spin results not satisfactory.	<ul style="list-style-type: none"> – Wash small and large items together.
Spinning several times.	<ul style="list-style-type: none"> – No malfunction – the automatic load balancing system is attempting to balance the load.
Dispenser ⌘ not completely rinsed out.	<ul style="list-style-type: none"> – Remove dispenser. Clean detergent dispenser and liquid detergent insert → <i>page 8</i>.
Odor in washing machine.	<ul style="list-style-type: none"> – Perform Regular/Cotton Hot cycle without adding laundry. Also use detergent.
Foam comes out of the dispenser drawer.	<ul style="list-style-type: none"> – Too much detergent added? Mix 1 tablespoon fabric softener with 1 pt (½ liter) water and pour into dispenser II of the detergent drawer (<i>not with outdoor fabrics!</i>). – Too much soap or non – HE soap used? Mix 1 tablespoon fabric softener with 1 pt (½ liter) water and pour into dispenser II of the detergent drawer (<i>not with outdoor fabrics!</i>). – Reduce amount of detergent used for future wash cycles.
Strong odor, vibrations and "walking" during spinning.	<ul style="list-style-type: none"> – Are machine feet fixed? Secure machine feet → <i>Installation instructions page 5</i>. – Shipping lock removed? Remove shipping lock → <i>Installation instructions page 3</i>.
Display lamps not functioning during operation.	<ul style="list-style-type: none"> – Power outage? – Fuse blown? Flip / replace fuse. – If the malfunction happens repeatedly, call customer service.
Cycle runs longer than usual.	<ul style="list-style-type: none"> – No malfunction – Imbalance control system equalizes imbalance by frequent distribution of the wash. – No malfunction – Foam control system is active and additional rinse cycle has been started.
Detergent residue on the laundry.	<ul style="list-style-type: none"> – Some phosphate-free detergents contain water insoluble residues. – Select Refresh or brush off the laundry after washing.
If a malfunction cannot be repaired by yourself or if a repair is necessary:	<ul style="list-style-type: none"> – Set cycle selector to Off and unplug the washer's electrical cord. – Close water faucet and call customer service → <i>Installation instruction</i>.



Important Safety instructions

⚠ WARNING

- To reduce the risk of fire, electric shock, serious injury or death when using your washing machine, follow basic precautions, including the following:
- BOSCH washers are provided with an Operating, Care and Installation Instructions Manual. Read and understand all instructions before using the washing machine.
 - Do not wash articles that have been previously cleaned, washed, soaked, or spotted with gasoline, dry cleaning solvents, other flammable or explosive substances as they give off vapors that could ignite or explode. This includes articles that have been exposed to Naptha.
 - Do not add gasoline, dry cleaning solvents, or other flammable or explosive substances to the wash. Wash laundry in water only. Flammable or explosive substances may give off vapors that could ignite or explode.
 - Under certain conditions hydrogen gas may be produced in a hot water system that has not been used for 2 weeks or more. HYDROGEN GAS IS EXPLOSIVE. If the hot water system has not been used for this length of time, turn on all hot water faucets and let the water flow out of each faucet for several minutes before using the washing machine. This will release any accumulated hydrogen gas. As the gas is flammable, do not smoke or use an open flame while carrying out this procedure.
 - Before the appliance is removed from service or discarded, remove the door and the power cord/plug.
 - Do not reach into the appliance if the wash drum is moving.
 - Do not install or store this appliance where it will be exposed to the weather.
 - Do not use bleach. Hazardous fumes can form.
 - Do not tamper with the controls.
 - Do not repair or replace any part of the appliance or attempt any service unless specifically recommended in the user maintenance instructions or in published user repair instructions that you understand and have the skills to carry out.
 - Always unplug the washing machine from the power supply before attempting any service. Disconnect the power cord by grasping the plug, not the cord.
 - To reduce the risk of fire, clothes, cleaning rags, mop heads and the like which have traces of any flammable substance, such as vegetable oil, cooking oil, petroleum based oils or distillates, waxes, fats, etc., must not be placed in the washing machine. These items may contain flammable substances which, even after washing, may smoke or catch fire.
 - Do not machine wash fiberglass materials (such as curtains and window coverings that use fiberglass materials). Small particles may remain in the washing machine and stick to fabrics in subsequent wash loads causing skin irritation.
 - When children become old enough to operate the appliance, it is legal responsibility of the parents or legal guardians to ensure that they are instructed in safe practices by qualified persons.
 - Keep pets away from the washing machine.
 - Do not insert/pull out the power plug with wet hands.
 - Do not touch the door if washing at high temperatures.
 - Use caution when draining hot water.
 - Do not allow anyone to climb, lean or hang on any part of the washer including any protruding components such as the appliance door or a pull-out shelf.
 - Do not sit or stand on the top of the washing machine.
 - To reduce the risk of fire or electrical shock, DO NOT use an extension cord or an adapter to connect the washing machine to the power supply.
 - The washing machine must only be used for its intended purpose.

Important Safety instructions

- Always follow the fabric care instructions recommended by the clothing manufacturer.
- Do not use the washing machine if it has a worn power cord or loose plug. Contact an authorized service agent.
- Make sure that all washer water connections have shut-off valves and are readily accessible. Close the washing machine water shut-off valve(s) at the end of each wash day.
- Check the fill hose connections on a regular basis to ensure that they are tight and not leaking.
- Always read and follow the instructions of the manufacturer of the detergent(s), cleaning aid(s), fabric softener(s) and static eliminator(s) which you are using. Heed all warnings and precautions.
- Store all laundry chemicals and aids in a cool dry place according to the manufacturers' instructions.
- To reduce the risk of poisoning or chemical burns, keep all cleaning products out of the reach of children.
- Do not operate the washing machine if any guards, panels and/or fasteners except transport fixing bolts have been removed.
- Do not operate the washing machine if parts are missing or broken.
- Do not bypass any safety devices.
- To avoid floor damage and mold growth, do not let spills or splashes cause standing water around or under the appliance.
- Do not operate this washing machine until you are sure that:
 - a. the washing machine has been installed according to the INSTALLATION INSTRUCTIONS.
 - b. all water, drain, power and grounding connections are in compliance with all local regulations and/or other applicable regulations and requirements.
- Failure to install, maintain and/or operate the washing machine according to the manufacturer's instructions may result in injury and/or damage.
- Check the fill hose connections on a regular basis to ensure that they are tight and not leaking.
- Removing any panel, including the service panel in the front can expose sharp edges and points, electrical connections and hot surfaces.
- To avoid damage to the door, do not push against the door when moving the unit. Precautions should be taken to avoid damage to the floor.
- The water connections should be made and tested before electrical power is applied to the machine.

Notes:

- The IMPORTANT SAFEGUARDS and WARNINGS indicated in this manual do not cover all possible conditions which may occur. Common sense, caution and care must be exercised when installing, maintaining or operating the washing machine.
- Always contact your dealer, distributor, service agent or the manufacturer about any problems or conditions that you do not understand.

GROUNDING INSTRUCTIONS

- This appliance must be grounded. In the event of a malfunction or breakdown, grounding will reduce the risk of electric shock by providing a path of least resistance for the electric current. This appliance is equipped with a cord that has an equipment-grounding conductor and a grounding plug. The plug must be plugged into an appropriate outlet that is properly installed and grounded in accordance with all local codes and ordinances.
- Improper connection of the equipment grounding conductor can result in electric shock. Connect to individual Branch Circuit. Check with a qualified technician or a licensed electrician if you are in doubt as to whether the washer is properly grounded. DO NOT modify the plug provided with the appliance – if it will not fit the outlet have a proper outlet installed by a qualified electrician.

– KEEP THESE INSTRUCTIONS FOR FUTURE REFERENCE

In case of change of ownership, manual should be conveyed with the washer.

SAVE THESE INSTRUCTIONS.



WARNING – to reduce the risk of fire, electric shock, or injury to persons, read the *Important Safety instructions* before operating this appliance. Also follow the separate installation instructions. Follow the safety instructions on page 10,11!