



FRIGIDAIRE

Factory Parts Catalog

Product No.	FGIH3047VDA	FGIH3047VFA
Series	30" FSFC elec	30" FSFC elec
Color	black stainless	stainless
Market	North America	North America
Owner's Guide	A13081101	A13081101
Installation Instructions	809127105	809127105
Service Data Sheet	808533505	808533505
Quick Start Guide	808595718	808595718

Frigidaire

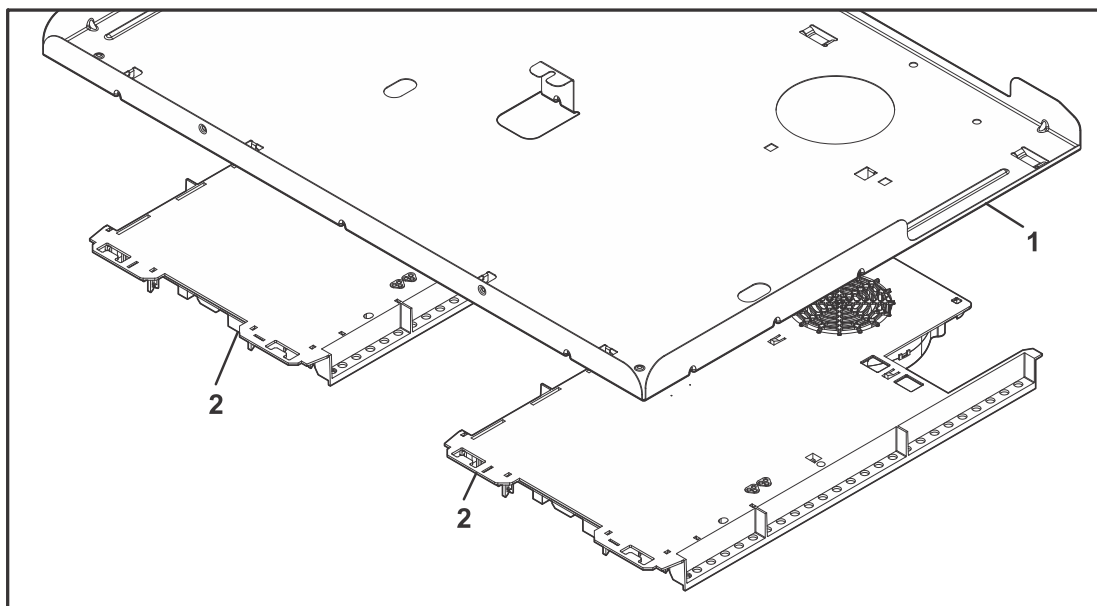
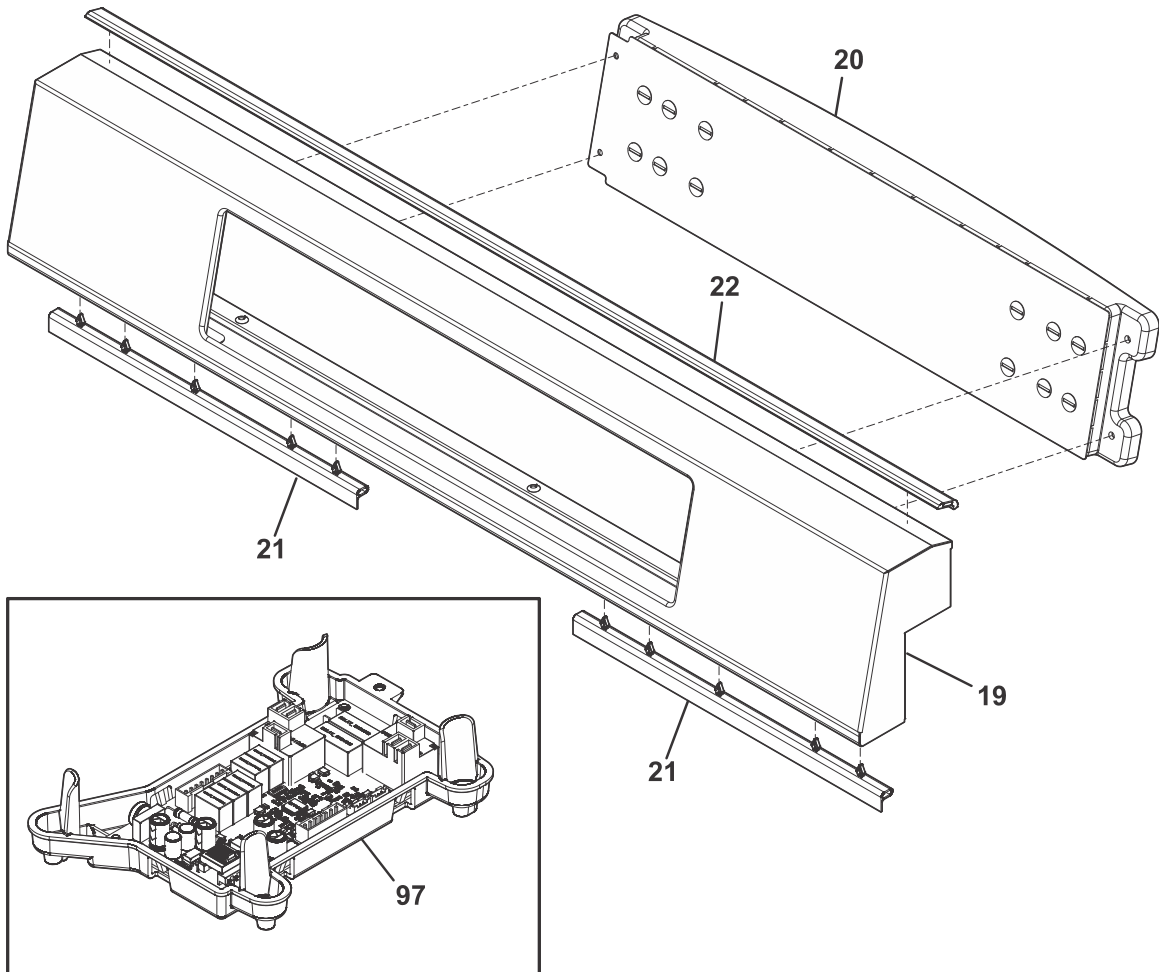
P.O. BOX 8020
CHARLOTTE, NC 28262

Publication No.
5995715124
19/06/03
(EN/SERVICE/ECL)
369

30-INCH FREE- STANDING INDUCTION RANGE

Model No.
FGIH3047V

BACKGUARD/INDUCTION UNIT



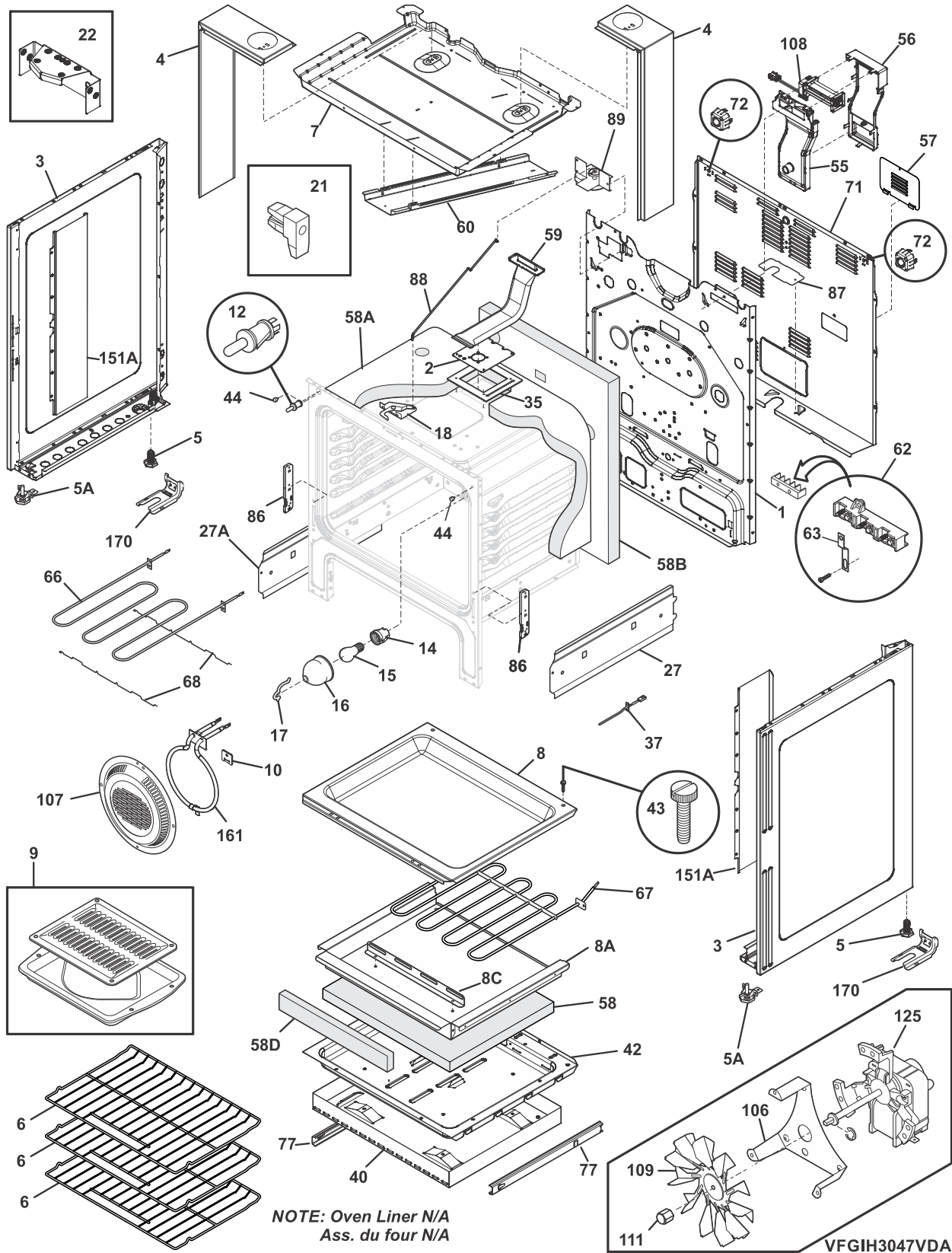
CFGIH3047VDA

BACKGUARD/INDUCTION UNIT

Model Index: **A** FGIH3047V (FGIH3047VDA)
 B FGIH3047V (FGIH3047VFA)

POS. NO	PART NO.		DESCRIPTION
1	5304519431	A B	Panel, mounting, induction
2 #	5304521812	A B	Control Assembly, induction mod., complete
19	5304519390	A -	Control Panel, front, black stainless
19	5304521811	- B	Control Panel, front, stainless
*	5304520393	A B	Spacer, foam block, 2" x 1", w/adhesive
20 #	5304519401	A B	Controller, electronic, black, ES501I inductn
20*	5304521041	A B	Insulator, controller, w/adhesv tape
21	5304521020	A B	Seal, control panel
22	5304521042	A -	Bumper Guard, assembly, magnetic
97 #	5304516862	A B	PC Board, assembly, OVC3
97*	5303289910	A B	Screw, truss sqdr, 8A x 1", 62*
* #	5304521814	A B	Harness, wiring, communication, UI to generator
* #	5304514353	A B	Harness, generator, low voltage
* #	5304519440	A B	Harness, wiring, induction, w/ferrite core
*	316021105	A B	Screw, hex head cup pt, 8-18 x 0.375, black
*	316021109	A B	Screw, 8-18 x 0.5, chrome

BODY

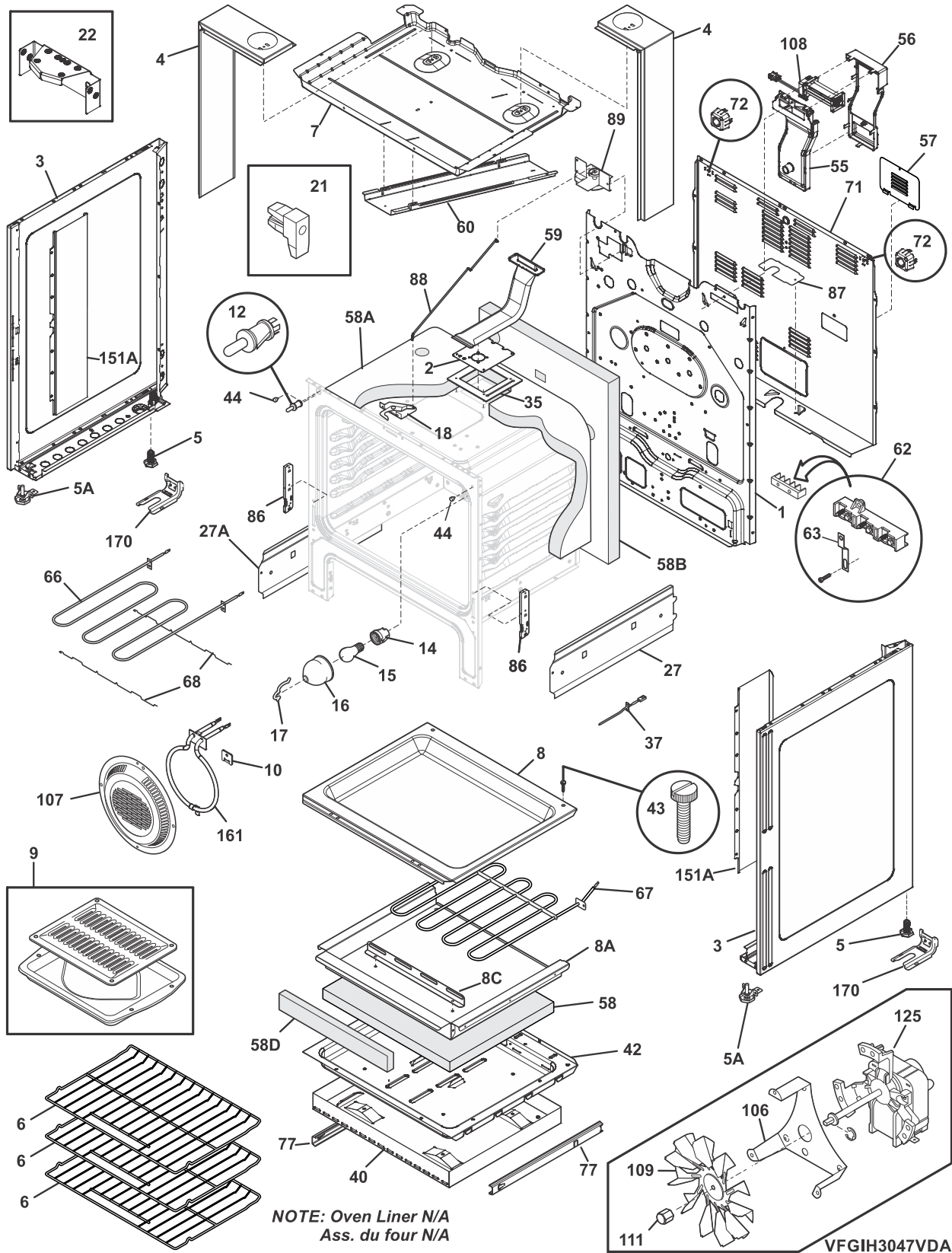


BODY

Model Index: **A** FGIH3047V (FGIH3047VDA)
B FGIH3047V (FGIH3047VFA)

POS. NO	PART NO.		DESCRIPTION
1	5304514161	A B	Back, main
2	5304514136	A B	Plate, oven vent
2*	297174300	A B	Screw, self pierce, #8, 18x.63
3	316400136	A B	Panel, bodyside, black, RH
3	316400137	A B	Panel, bodyside, black, LH
4	5304521813	A B	Duct Assembly Kit, fan intake, both LH & RH
5	316272900	A B	Screw, leveling, plastic, rear, (2)
5A	5304509869	A B	Leveling Leg Assy, metal, front, (2), bracket & leg
*	316021132	A B	Screw, 8-18 X 11/16, black, (3)
6	316498003	A B	Rack, oven
7	5304519432	A B	Shield, cassis top
8	316505601	A B	Panel, oven bottom
8*	316064600	A B	Support, oven bottom
8A	316505701	A B	Base, bake element
8C	316505801	A B	Support, element
9	5304494997	A B	Broil Pan Kit, pan & insert, slate blue, Optional, accessory
10	5304521822	A B	Plate, cover, w/seal
12 #	316445501	A B	Switch, oven light, door frame
14 #	316116400	A B	Receptacle, oven light
15 #	316538901	A B	Lamp, oven light
16	5304521821	A B	Glass, oven light lens, w/seal
17	316087500	A B	Retainer, lens
18 #	316405800	A B	Latch Assembly, oven door
*	5303285179	A B	Screw, wafer head, 8-32T x 0.500, black, 44*
21	316408000	A B	Clip, bodyside
22	5304514125	A B	Bracket, support, body side, (2)
22*	316279600	A B	Screw, bracket, stiffener, (4)
27	316604100	A B	Shield, warmer side, RH
27A	316604101	A B	Shield, warmer side, LH
35	316542101	A B	Gasket, fluebox insul.
37 #	316490003	A B	Probe, oven temp
40	316602600	A B	Shield, warmer drawer
42	316601600	A B	Shield, chassis, lower
43	3131732	A B	Screw, 8-18 x 1.438, oven bottom
44	316517600	A B	Bumper, front, main
55	5304514171	A B	Duct, inlet air, front
56	5304514172	A B	Duct, inlet air, rear
57	316283600	A B	Cover, access
58	316403804	A B	Insulation, oven sump
58A	316403700	A B	Insulation, oven wrapper
58B	316403600	A B	Insulation, oven back
58D	316509700	A B	Insulation, oven bottom
59	5304514160	A B	Tube, oven vent, upper
60	5304514357	A B	Duct, cooling
62 #	5303935271	A B	Terminal Block Kit
62*	316001003	A B	Screw, ground wire
62*	316205500	A B	Nut, hex flange, 3/8 10-32
62*	316542203	A B	Insulator
63	316542600	A B	Plate, grounding strap

BODY

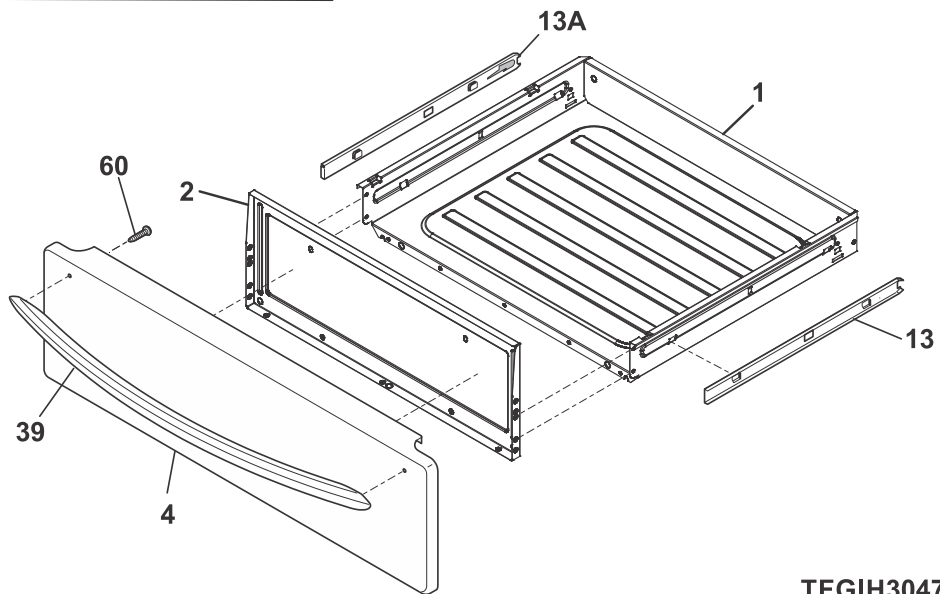
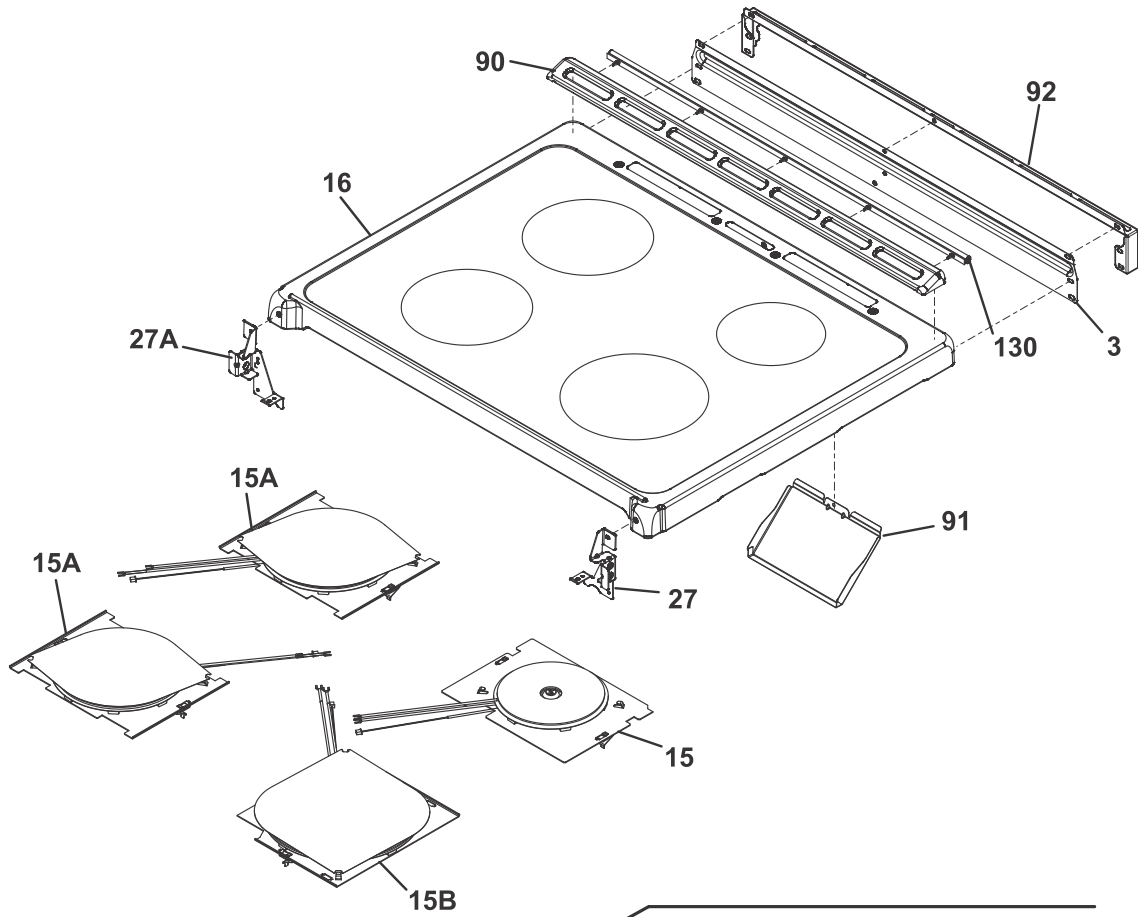


BODY

Model Index: **A** FGIH3047V (FGIH3047VDA)
B FGIH3047V (FGIH3047VFA)

POS. NO	PART NO.		DESCRIPTION
66 #	5304521819	A B	Element, broil, 4000, 6 pass w/seal
67 #	316505500	A B	Element, bake, 3000W
68	316429100	A B	Support, element, broil
71	5304514174	A B	Shield, wire, rear
72	5304514177	A B	Spacer, wire shield, (2)
77	316456700	A B	Glide, warmer drawer, outer/RH & LH, (2)
86	316508600	A B	Receptacle, hinge, (2)
*	316418900	A B	Screw, sims lp, #8-32 x 5/16", black
87	316081200	A B	Bracket, cable mtg
88	316232702	A B	Rod, auto latch
89 #	316464300	A B	Motor-latch
106	316404100	A B	Bracket, motor mtg.
107	316026701	A B	Cover, fan
*	5303271648	A B	Screw, wafer hd sq dr, 8-18AB x 0.5
108#	5304514166	A B	Fan Assembly, cooling
109	318398302	A B	Fan Blade
111	316136600	A B	Nut, fan retainer
125#	316256100	A B	Motor-fan
*	5303289910	A B	Screw, truss sqdr, 8A x 1", 62*
151A	5304516866	A B	Shield, heat, bodyside
161#	5304521820	A B	Element, convection, 900W, w/seal
170	316112005	A B	Anti Tip Kit, assy, w/template
170*	316107200	A B	Bracket, anti-tip
170*	316116000	A B	Screw, concrete, 1.75", anti-tip brkt
170*	316541700	A B	Template, anti-tip
* #	5304519400	A B	Harness, wiring, main
* #	5304518021	A B	Harness, wiring, low voltage
* #	5304512924	A B	Harness Assembly, electric filter, w/capacitors
*	316021105	A B	Screw, hex head cup pt, 8-18 x 0.375, black
*	316021109	A B	Screw, 8-18 x 0.5, chrome
*	316089500	A B	Screw, 10-16 x .486
*	5303288566	A B	Screw, TR HD SQD AB, 8-18 x 0.25, (8)

TOP/DRAWER



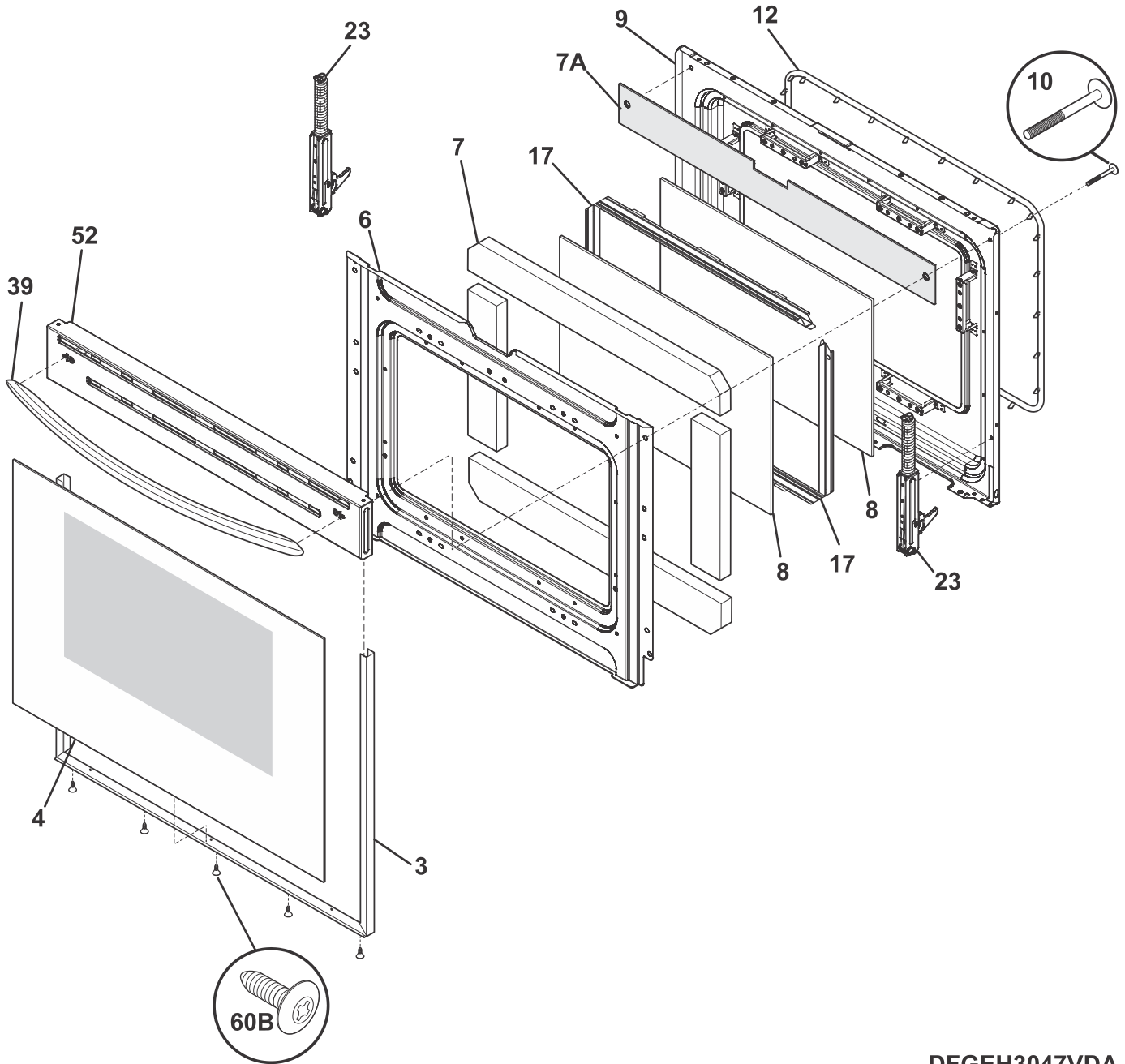
TFGIH3047VDA

TOP/DRAWER

Model Index: A FGIH3047V (FGIH3047VDA)
 B FGIH3047V (FGIH3047VFA)

POS. NO	PART NO.		DESCRIPTION
1	807108405	A B	Drawer, warmer
*	316089500	A B	Screw, 10-16 x .486
2	316403203	A B	Liner, black, drawer
3	5304514133	A B	Shield, rear wall, upper
4	5304517133	A -	Panel, drawer, black stainless
4	5304517477	- B	Panel, drawer, stainless
13	316415000	A B	Glide, warmer, inner RH
13A	316415001	A B	Glide, warmer, inner LH
15 #	387404759	A B	Element Assembly, induction coil, 140MM, RH rear
15A#	387404866	A B	Element Assembly, induction coil, 180MM, LH rear/front
15B#	387761248	A B	Element Assembly, induction coil, 210MM, RH front
16	5304519397	A B	Smoothtop, assembly, glass/steel, black
27	5304514123	A B	Bracket, mounting, RH, cooktop
27A	5304514124	A B	Bracket, mounting, LH, cooktop
*	5303285179	A B	Screw, wafer head, 8-32T x 0.500, black, 44*
39	5304518030	A -	Handle, door/drawer, black stainless
39	5304518029	- B	Handle, door/drawer, stainless
60	5303288572	A B	Screw-handle mtg
90	5304514157	A B	Trim, vent, black, rear
91	5304514354	A B	Deflector, moisture, (2)
92	5304520261	A B	Rear Filler Kit, FCFS range, black
130	808931802	A B	Seal, maintop, silicone, rear
* #	5304517540	A B	Harness, wiring, surface
*	316021105	A B	Screw, hex head cup pt, 8-18 x 0.375, black
*	316021109	A B	Screw, 8-18 x 0.5, chrome

DOOR



DFGEH3047VDA

DOOR

Model Index: **A** FGIH3047V (FGIH3047VDA)
 B FGIH3047V (FGIH3047VFA)

POS. NO	PART NO.		DESCRIPTION
3	5303935378	A B	Trim kit-door, 3 sided, black, w/tape
4	316355501	A B	Glass Assembly, door, black, outer, w/foil
6	316402315	A B	Shield, wool
7	316403900	A B	Insulation, oven door
7A	5304518033	A B	Insulation, door liner, top
8	316117506	A B	Glass, oven door, inner
9	316423814	A B	Liner, oven door
10	316513301	A B	Screw, handle mtg, 10-24 x 2.188, (2)
12	5304498835	A B	Seal, oven door
17	5304504811	A B	Spacer, glass
23	5304521043	A B	Hinge, door, orange, dual spring
23*	316418900	A B	Screw, sims lp, #8-32 x 5/16", black
39	5304518030	A -	Handle, door/drawer, black stainless
39	5304518029	- B	Handle, door/drawer, stainless
52	5304518017	A -	Door Cap, assembly, black stainless, insul & spacers
52	5304518016	- B	Door Cap, assembly, stainless, insul & spacers
60B	316021109	A B	Screw, 8-18 x 0.5, chrome
*	316483102	A B	Label, anti-tip

WIRING DIAGRAM

