



FRIGIDAIRE

Factory Parts Catalog

| | |
|----------------|---------------|
| Product No. | FFES3026TSE |
| Series | 30" slide-in |
| Color | stainless |
| Market | North America |
| Wiring Diagram | |
| Owner's Guide | A00538901 |

Frigidaire

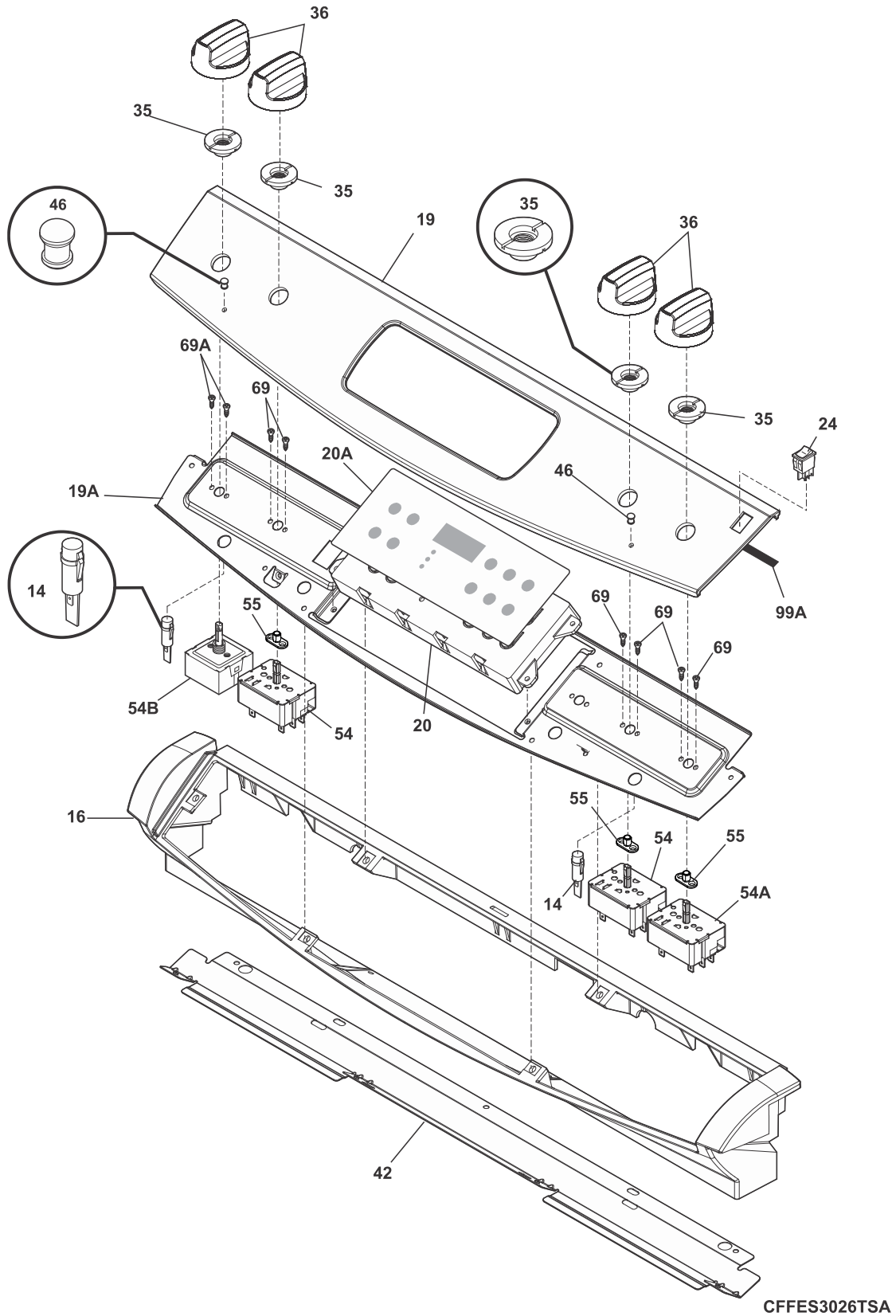
P.O. BOX 8020
CHARLOTTE, NC 28262

30-INCH SLIDE-IN ELECTRIC RANGE

Model No.
FFES3026T

Publication No.
5995713210
19/03/21
(EN/SERVICE/CW)
377

BACKGUARD

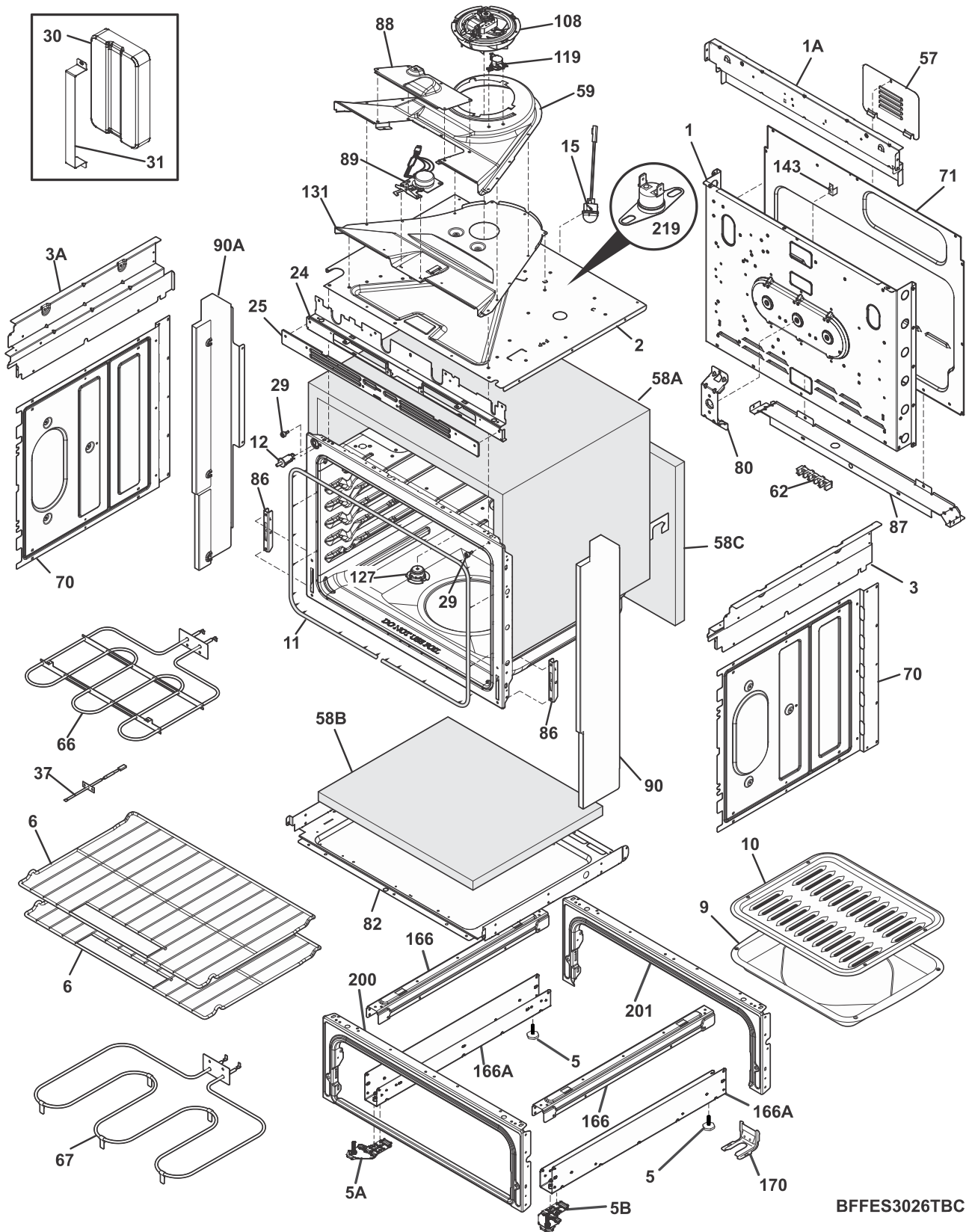


CFFES3026TSA

BACKGUARD

| POS. NO | PART NO. | DESCRIPTION |
|---------|------------|---|
| 14 # | 318044831 | Light, indicator, natural, (4) |
| 16 | 318299102 | Console, assy., black |
| 19 | 5304511045 | Control Panel, assembly, stainless/black |
| 19A | 318224401 | Panel, control mtg. |
| 20 # | 5304511028 | Controller, electronic, ES300 |
| 20*# | 5304520776 | Harness, wiring, display |
| 20A | 316419145 | Overlay, clock, black, ES300 |
| 24 # | 5304515643 | Switch, rocker, black |
| 35 | 318183105 | Support, glass, black, (4) |
| 36 | 5304511055 | Knob, control, black |
| 42 | 318574701 | Support, control panel, black |
| 46 | 318228301 | Lens, indicator light |
| 54 # | 318293830 | Switch, surface element, small, (2) |
| 54A# | 318293831 | Switch, surface element, large |
| 54B# | 318191023 | Switch, infinite, dual |
| 55 | 318402901 | Bushing, switch |
| 69 | 5304480396 | Screw, 8-32 x 3/8", (4) |
| 69A | 5303288565 | Screw, truss sqdr, 8-32 x 3/16, switch mtg |
| 99A | 318223900 | Gasket, dark grey |
| * | 316021105 | Screw, hex head cup pt, 8-18 x 0.375, black |
| * | 316021110 | Screw, 8-18 x 0.5, black |

BODY

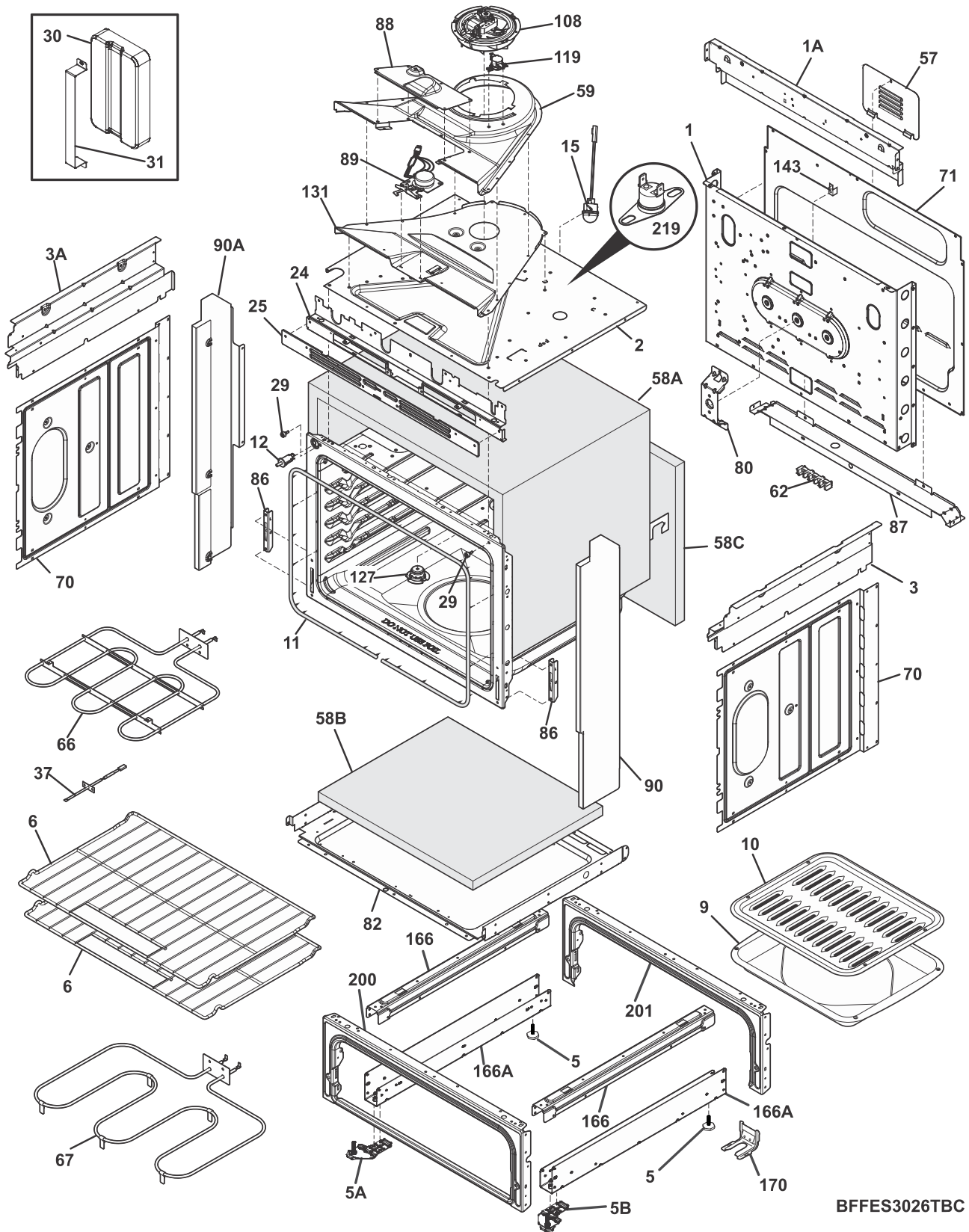


BFFES3026TBC

BODY

| POS. NO | PART NO. | DESCRIPTION |
|---------|------------|---|
| 1 | 139017310 | Panel, main back |
| 1A | 139004600 | Panel, main back, upper |
| 2 | 139028100 | Shield, insulation, top |
| 3 | 318225230 | Panel, bodyside, upper RH |
| 3A | 318225231 | Panel, bodyside, upper LH |
| 5 | 316498903 | Leveling Leg |
| 5A | 5304511891 | Leg Assembly, leveling, LH, front |
| 5B | 5304511892 | Leg Assembly, leveling, RH, front |
| 6 | 139011800 | Rack, oven, w/handle |
| 9 | 316081900 | Pan, broiler |
| 10 | 316082000 | Insert, broiler pan |
| 11 | 807545502 | Seal, oven door, gray |
| 12 # | 318394802 | Switch, light, door |
| 15 # | 139009000 | Lamp Assembly, round, halogen, w/lens, w/bulb |
| 15*# | 318946500 | BULB, halogen, G9, 25W, 120V |
| 24 | 139074902 | Frame, vent trim |
| 25 | 139075001 | Cover, vent trim, black |
| 29 | 316517600 | Bumper, front, main |
| 30 | 5304511083 | Counterweight, concrete block |
| 31 | 5304511084 | Bracket, concrete block |
| 37 # | 5304504897 | Sensor, oven temp probe |
| 57 | 316283600 | Cover, access |
| 58A | 139001700 | Insulation, oven wrapper, top & sides |
| 58B | 139020303 | Insulation, oven bottom |
| 58C | 139020202 | Insulation, oven back |
| 59 | 139027600 | Duct, cooling fan, upper |
| 62 | 5303935061 | Terminal Block Kit |
| 62* | 316001003 | Screw, ground wire |
| 62* | 316205500 | Nut, hex flange, 3/8 10-32 |
| 62* | 318264200 | Plate, grounding strap |
| 62* | 5303289910 | Screw, truss sqdr, 8A x 1", 62* |
| 66 # | 139008900 | Element, broil, 6 pass, 3400W |
| 67 # | 139027501 | Element, bake, 6 pass, 2750W |
| 70 | 139000601 | Shield, insulation, sides, (2) |
| 71 | 139014001 | Shield, rear wall, lower |
| 80 | 139021101 | Bracket, support, chassis/fan |
| 82 | 139008200 | Shield, insulation, lower |
| 86 | 318561100 | Receptacle, hinge, (2) |
| 86* | 316418900 | Screw, sims lp, #8-32 x 5/16", black |
| 87 | 139020102 | Bracket, cable mtg. |
| 88 | 5304506964 | Cover, latch motor |
| 89 # | 139078302 | Motor, latch assembly |
| 90 | 5304511889 | Panel, filler, black, RH |
| 90A | 5304511890 | Panel, filler, black, LH |
| 108# | 318575612 | Motor Assembly, cooling fan |
| 108* | 5304517810 | Harness, wiring, cooling fan |
| 119# | 807144901 | Thermostat, safety, 110C deg |
| 127 | 139042600 | Tube Assembly, vent, w/catalyst |
| 131 | 139027700 | Duct, cooling fan, lower |
| 143 | 318172904 | Bracket, wire support |
| 166 | 318298410 | Bracket, base support, (2) |

BODY

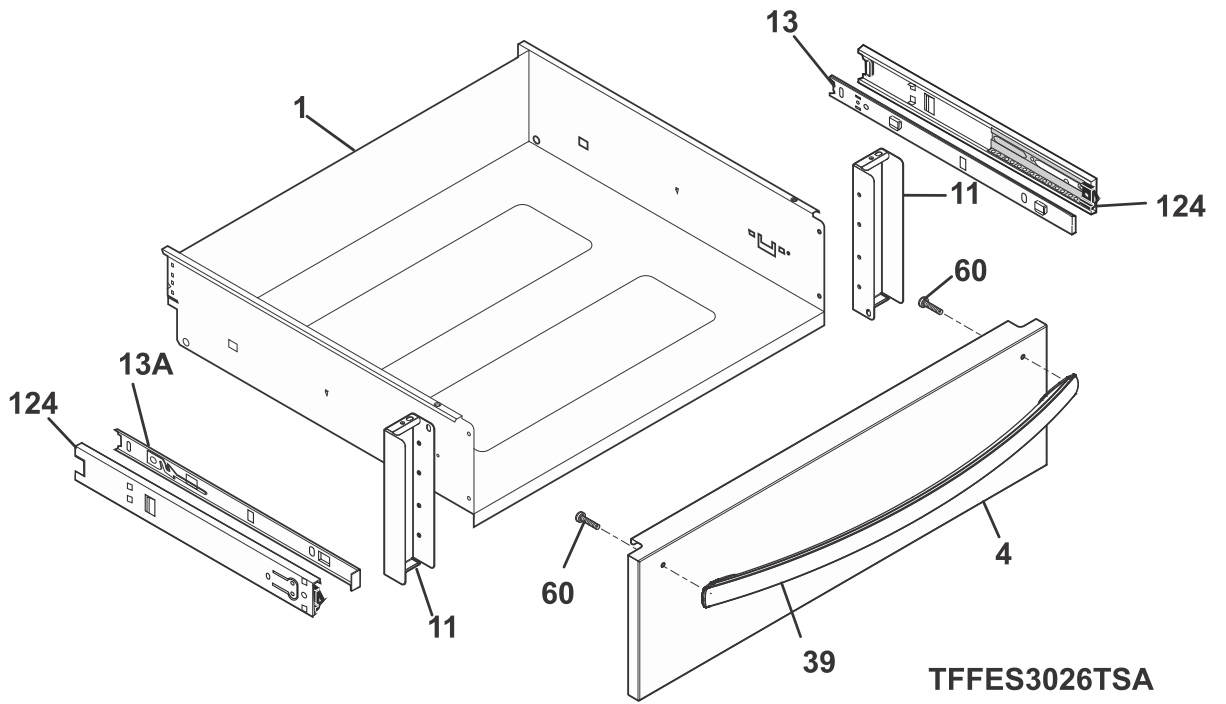
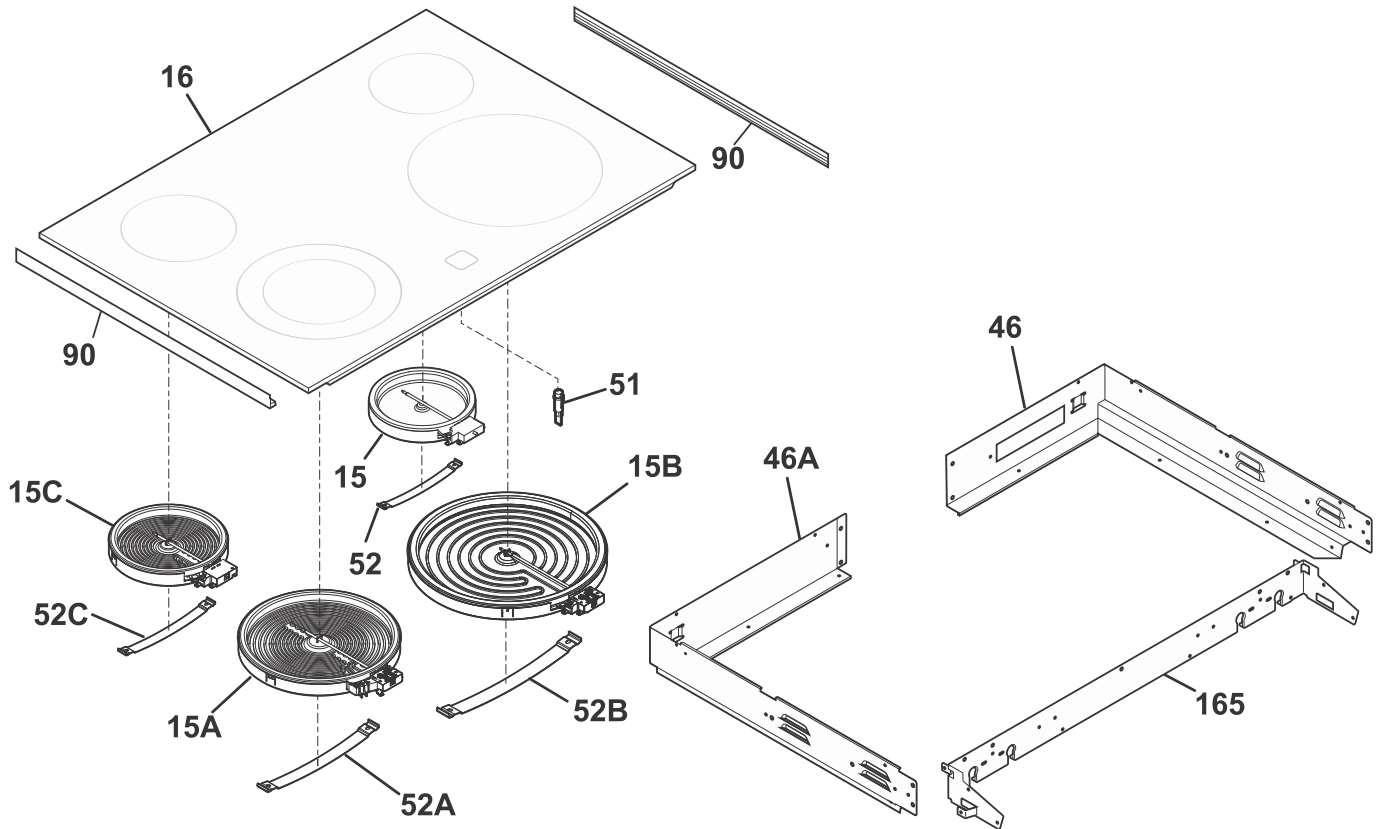


BFFES3026TBC

BODY

| POS. NO | PART NO. | DESCRIPTION |
|---------|------------|--|
| 166A | 5304511884 | Bracket, base support, lower |
| 170 | 5304486410 | Kit, anti tip, w/brkt & instru |
| 200 | 318298232 | Frame, drawer, black, front |
| 200* | 318147430 | Bumper, (2) |
| 201 | 318298233 | Frame, drawer, black, rear |
| 201* | 318531701 | Spacer |
| 219# | 318005229 | Switch, thermal cutout |
| * | 316021105 | Screw, hex head cup pt, 8-18 x 0.375, black |
| * | 316021109 | Screw, 8-18 x 0.5, chrome |
| * | 316021110 | Screw, 8-18 x 0.5, black |
| * | 318235301 | Connector assy., w/3 lugs & nuts, w/instructions |
| * | 807597603 | Screw, self tapping, 8-18 x 11/32, (4) |
| * # | 5304517807 | Harness, wiring, main |

TOP/DRAWER

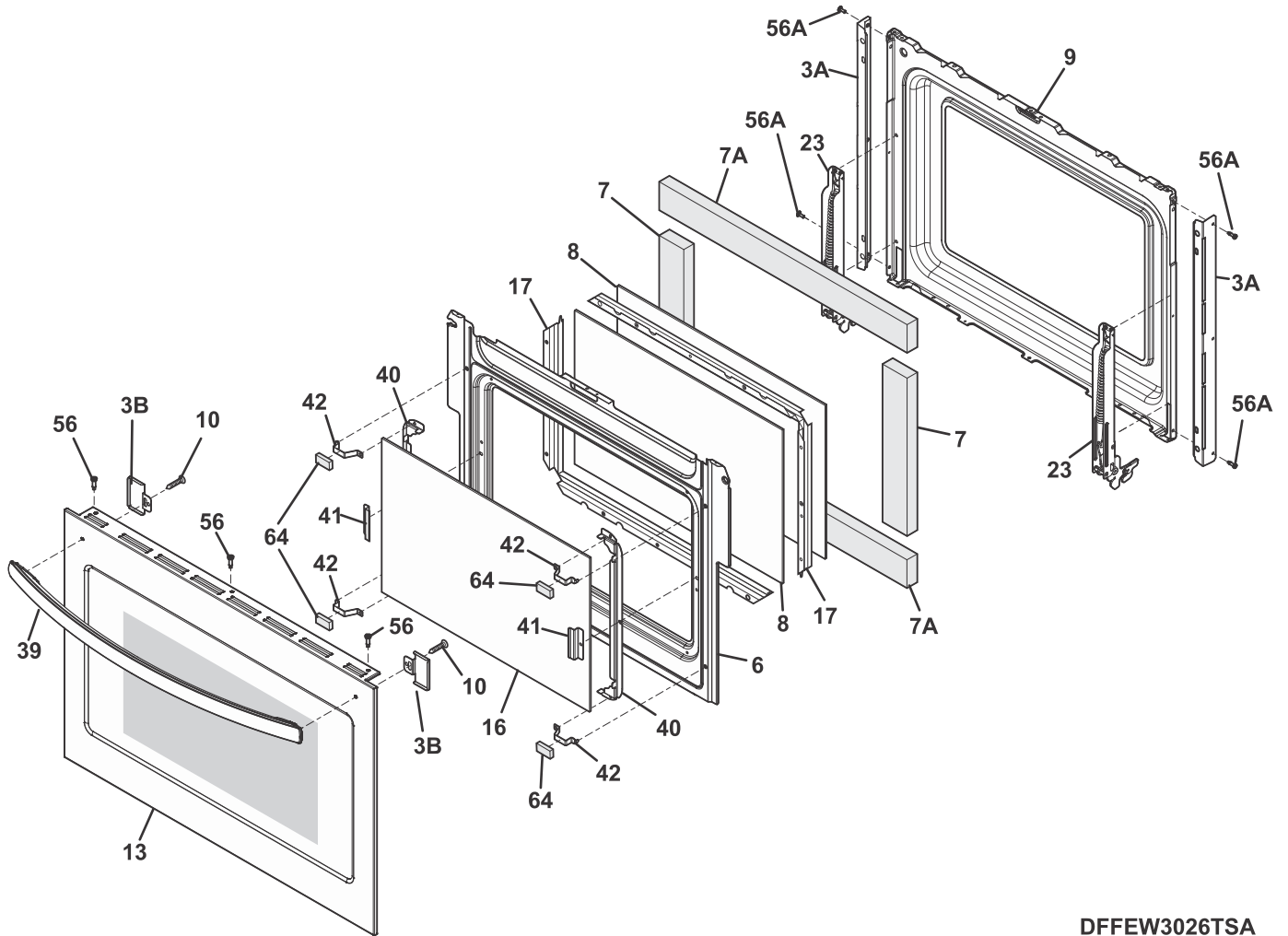


TFFES3026TSA

TOP/DRAWER

| POS. NO | PART NO. | DESCRIPTION |
|---------|------------|--|
| 1 | 318107317 | Drawer, black |
| 4 | 318298812 | Panel, drawer, stainless, front |
| 11 | 318298600 | Bracket, drawer support, (2) |
| 13 | 318259504 | Glide, warmer, inner RH |
| 13A | 318259505 | Glide, warmer, inner LH |
| * | 5304501948 | Screw, TR HD PHD, 8-18 x 3/16 |
| 15 # | 318178110 | Element, surface, 6", 1200, (2), radiant |
| 15A# | 316282000 | Element, dual, 9"/6", surface, 3000W, quick boil |
| 15B# | 5304510566 | Element, radiant, 12", top, 2700W |
| 15C# | 318198851 | Element, surface, 7", 1500w |
| 16 | 5304514367 | Smoothtop Assembly, glass, black |
| 39 | 5304507752 | Handle, door, stainless |
| 46 | 318568200 | Box, burner, RH |
| 46A | 318568201 | Box, burner, LH |
| 51 # | 318044831 | Light, indicator, natural, (4) |
| 52 | 318122006 | Spring, element mtg, small |
| 52A | 318122010 | Spring, element mtg, 3000W |
| 52B | 318122011 | Spring, element mtg, 1200W/1800W |
| 52C | 318122004 | Spring, element mtg, 700W & 2100W |
| 60 | 5303288572 | Screw-handle mtg |
| 60* | 5304490894 | Washer, handle screw, flat |
| 90 | 318368001 | Channel, glass protector, (2) |
| 124 | 318330600 | Glide, drawer, outer/RH & LH, (2) |
| 165 | 318227520 | Plate, mounting |
| * # | 5304517816 | Harness, grounding wire |
| * | 316001003 | Screw, ground wire |
| * | 316021105 | Screw, hex head cup pt, 8-18 x 0.375, black |
| * | 316021109 | Screw, 8-18 x 0.5, chrome |
| * | 316021110 | Screw, 8-18 x 0.5, black |
| * # | 5304517801 | Harness, surface element |

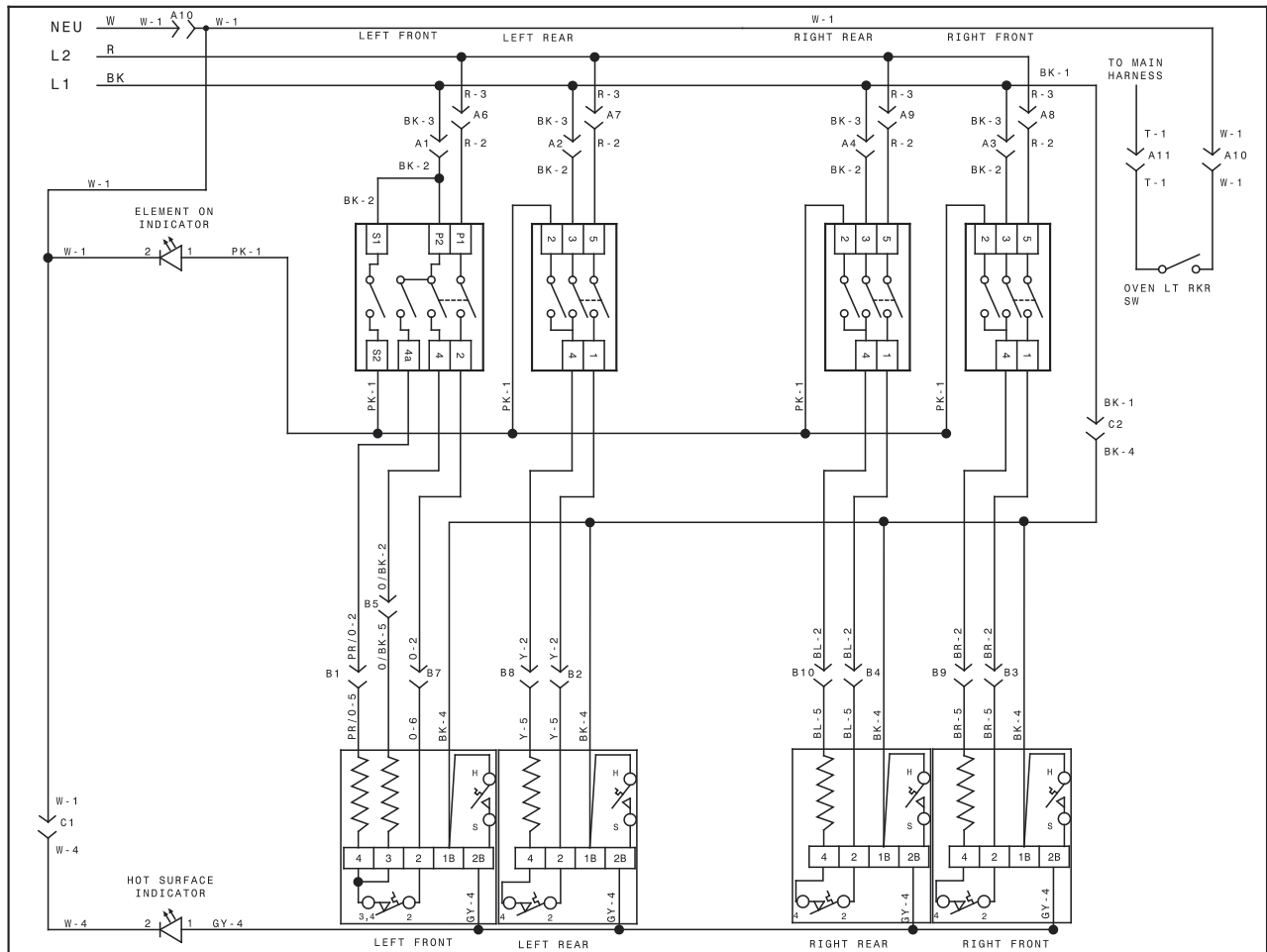
DOOR



DOOR

| POS. NO | PART NO. | DESCRIPTION |
|---------|------------|---|
| 3A | 139014401 | Trim, oven door, black, side, (2), vented |
| 3B | 318262104 | Cover, rear door, black, (2) |
| 6 | 139006905 | Baffle, door |
| 7 | 318372017 | Insulation, door |
| 7A | 318372016 | Insulation, door |
| 8 | 316117503 | Glass, oven door, inner, HRC1 |
| 9 | 139000411 | Liner, oven door |
| 10 | 5303288572 | Screw-handle mtg |
| 13 | 5304510851 | Door Assembly, outer, stainless/black |
| 16 | 316446400 | Glass, oven door, airwash |
| 17 | 318264731 | Spacer, glass, (2) |
| 23 | 316575914 | Hinge, oven door, lime |
| 23* | 316418900 | Screw, sims lp, #8-32 x 5/16", black |
| 39 | 5304507752 | Handle, door, stainless |
| 40 | 318242702 | Bracket, glass holder, door, (2) |
| 41 | 318370602 | Bracket, glass panel, (2) |
| 42 | 318382302 | Bracket, glass retainer, (4) |
| 56 | 809136201 | Screw, truss head, #8-32 x 3/8" |
| 56A | 5303311306 | Screw, 8-18 x 0.375 |
| 64 | 318165800 | Spacer, glass, foam |
| * | 316483102 | Label, anti-tip |

WIRING DIAGRAM



COLOR CODE / CODE
COULEUR

BK = BLACK/NOIR
BR = BROWN/BRUN
R = RED/ROUGE
O = ORANGE/ORANGE
Y = YELLOW/JAUNE
GN = GREEN/VERT
BL = BLUE/BLEU
PU = PURPLE/VIOLET
GY = GREY/GRIS
W = WHITE/BLANC
T = TAN/BRONZER
PK = PINK/ROSE
BR/W = BROWN/WHITE
BRUN/BLANC
O/BK = ORANGE/BLACK
ORANGE/NOIR
PR/O = PURPLE/ORANGE
VIOLET/ORANGE
GR/BK = GREY/BLACK
GRIS/NOIR
GR/O = GREY/ORANGE
GRIS/ORANGE
GR/Y = GREY/YELLOW
GRIS/JAUNE
GR/R = GREY/RED
GRIS/ROUGE
GR/BL = GREY/BLUE
GRIS/BLEU

CONNECTOR/
CONNECTEUR
A (DARK GREEN)

| | | | | | |
|----|----|----|---|---|---|
| 6 | 5 | 4 | 3 | 2 | 1 |
| 12 | 11 | 10 | 9 | 8 | 7 |

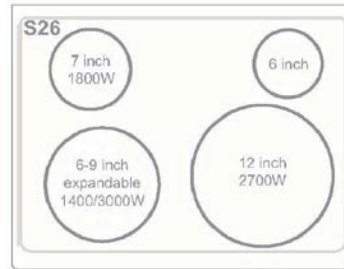
CONNECTOR/
CONNECTEUR
B (DARK GREEN)

| | | | | |
|----|---|---|---|---|
| 5 | 4 | 3 | 2 | 1 |
| 10 | 9 | 8 | 7 | 6 |

CONNECTOR/
CONNECTEUR
C (GRAY)

| | | |
|---|---|---|
| 3 | 2 | 1 |
|---|---|---|

| CODE CODE | GAUGE CALIBRE | TEMP.°C | CSA | UL |
|-----------|---------------|---------|------------|----|
| 1 | 18 | 150 | EXL-B 3321 | |
| 2 | 16 | 150 | EXL-B 3321 | |
| 3 | 14 | 150 | EXL-B 3321 | |
| 4 | 18 | 200 | SEW-1 3122 | |
| 5 | 16 | 200 | SEW-1 3122 | |
| 6 | 14 | 200 | SEW-2 3071 | |
| 7 | 18 | 200 | SEW-2 3071 | |
| 8 | 20 | 150 | EXL-B 3321 | |
| 9 | 20 | 200 | SEW-1 3122 | |

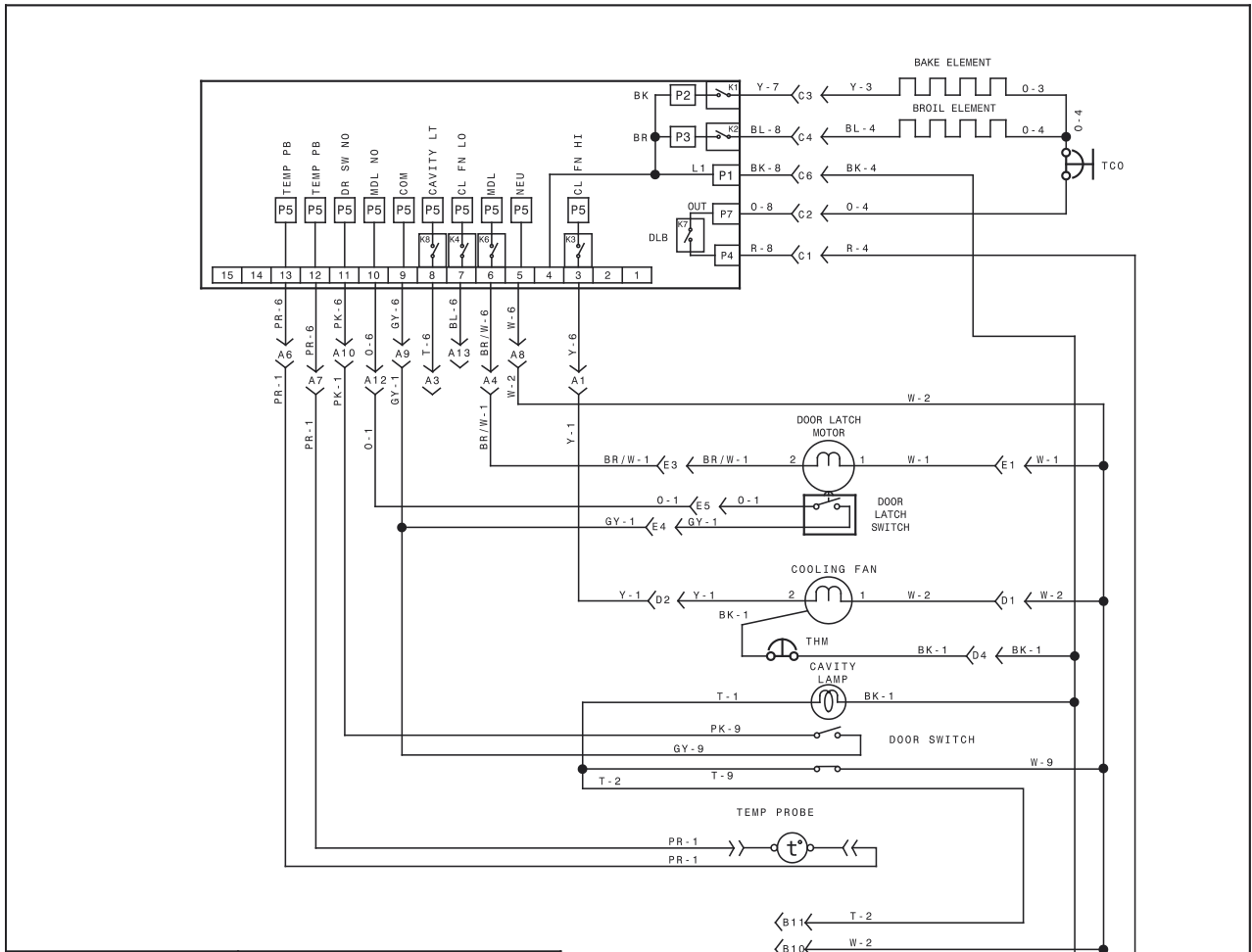


CAUTION: DISCONNECT POWER BEFORE SERVICING UNIT.
LABEL ALL WIRES PRIOR TO DISCONNECTION WHEN SERVICING CONTROLS.
WIRINGS ERRORS CAN CAUSE IMPROPER AND DANGEROUS OPERATION.
VERIFY PROPER OPERATION AFTER SERVICING.

ATTENTION: COUPEZ L'ALIMENTATION AVANT D'EFFECTUER LA REPARATION.
IDENTIFIEZ TOUS LES FILS AVANT DE LES DEBRANCHER QUAND L'APPAREIL EST HORS SERVICE.
LES ERREURS DE CONNECTION DE FILS PEUVENT CAUSER UN MAL FONCTIONNEMENT ET UN DANGER D'USAGE DE L'APPAREIL.
VERIFIEZ LE BON FONCTIONNEMENT DE L'APPAREIL APRES LE SERVICE.

| | |
|-------------|------|
| PART NUMBER | REV. |
| A13871301 | A |

WIRING DIAGRAM



- COLOR CODE / CODE COULEUR**
- BK = BLACK/NOIR
 - BR = BROWN/BRUN
 - R = RED/ROUGE
 - O = ORANGE/ORANGE
 - Y = YELLOW/JAUNE
 - GN = GREEN/VERT
 - BL = BLUE/BLEU
 - PU = PURPLE/VIOLET
 - GY = GREY/GRIS
 - W = WHITE/BLANC
 - T = TAN/BRONZER
 - PK = PINK/ROSE
 - BR/W = BROWN/WHITE BRUN/BLANC
 - O/BK = ORANGE/BLACK ORANGE/NOIR
 - PR/O = PURPLE/ORANGE VIOLET/ORANGE
 - GR/BK = GREY/BLACK GRIS/NOIR
 - GR/O = GREY/ORANGE GRIS/ORANGE
 - GR/Y = GREY/YELLOW GRIS/JAUNE
 - GR/R = GREY/RED GRIS/ROUGE
 - GR/BL = GREY/BLUE GRIS/BLEU

CONNECTOR A / CONNECTEUR A

| | | | | |
|----|----|----|----|----|
| 5 | 4 | 3 | 2 | 1 |
| 10 | 9 | 8 | 7 | 6 |
| 15 | 14 | 13 | 12 | 11 |

CONNECTOR B / CONNECTEUR B

| | | | | | |
|----|----|----|---|---|---|
| 6 | 5 | 4 | 3 | 2 | 1 |
| 12 | 11 | 10 | 9 | 8 | 7 |

CONNECTOR C / CONNECTEUR C

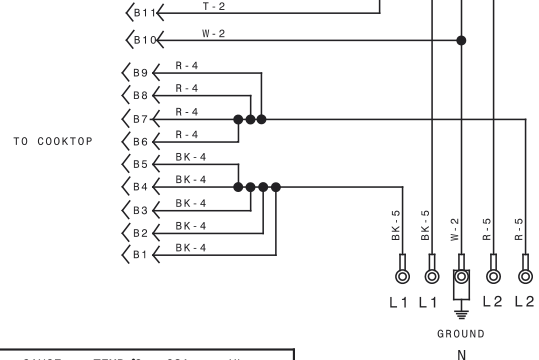
| | | |
|---|---|---|
| 3 | 2 | 1 |
| 6 | 5 | 4 |

CONNECTOR D / CONNECTEUR D

| | | | |
|---|---|---|---|
| 4 | 3 | 2 | 1 |
|---|---|---|---|

CONNECTOR E / CONNECTEUR E

| | | |
|---|---|---|
| 3 | 2 | 1 |
| 6 | 5 | 4 |



| CODE | GAUGE CALIBRE | TEMP.°C | CSA | UL |
|------|---------------|---------|-------|------|
| 1 | 20 | 150 | EXL-B | 3321 |
| 2 | 18 | 150 | EXL-B | 3321 |
| 3 | 16 | 150 | EXL-B | 3321 |
| 4 | 14 | 150 | EXL-B | 3321 |
| 5 | 12 | 150 | EXL-B | 3321 |
| 6 | 20 | 125 | EXL-A | 3173 |
| 7 | 16 | 125 | EXL-A | 3173 |
| 8 | 14 | 125 | EXL-A | 3173 |
| 9 | 20 | 200 | SF-1 | 3122 |

CAUTION: DISCONNECT POWER BEFORE SERVICING UNIT.
 LABEL ALL WIRES PRIOR TO DISCONNECTION WHEN SERVICING CONTROLS.
 WIRING ERRORS CAN CAUSE IMPROPER AND DANGEROUS OPERATION.
 VERIFY PROPER OPERATION AFTER SERVICING.

ATTENTION: COUPEZ L'ALIMENTATION AVANT D'EFFECTUER LA REPARATION.
 IDENTIFIEZ TOUS LES FILS AVANT DE LES DEBRANCHER QUAND L'APPAREIL EST HORS SERVICE.
 LES ERREURS DE CONNECTION DE FILS PEUVENT CAUSER UN MAL FONCTIONNEMENT ET UN DANGER D'USAGE DE L'APPAREIL.
 VERIFIEZ LE BON FONCTIONNEMENT DE L'APPAREIL APRES LE SERVICE.

FFED/S3026, 42512, 4253x

| | |
|------------------|----------|
| PART NUMBER | REV. |
| A13871315 | A |