



FRIGIDAIRE

Factory Parts Catalog

Product No.	FFEH3051VSA
Series	30" FSFC elec
Color	stainless
Market	North America
Owner's Guide	A13080603
Installation Instructions	809127105
Service Data Sheet	808532588

Frigidaire

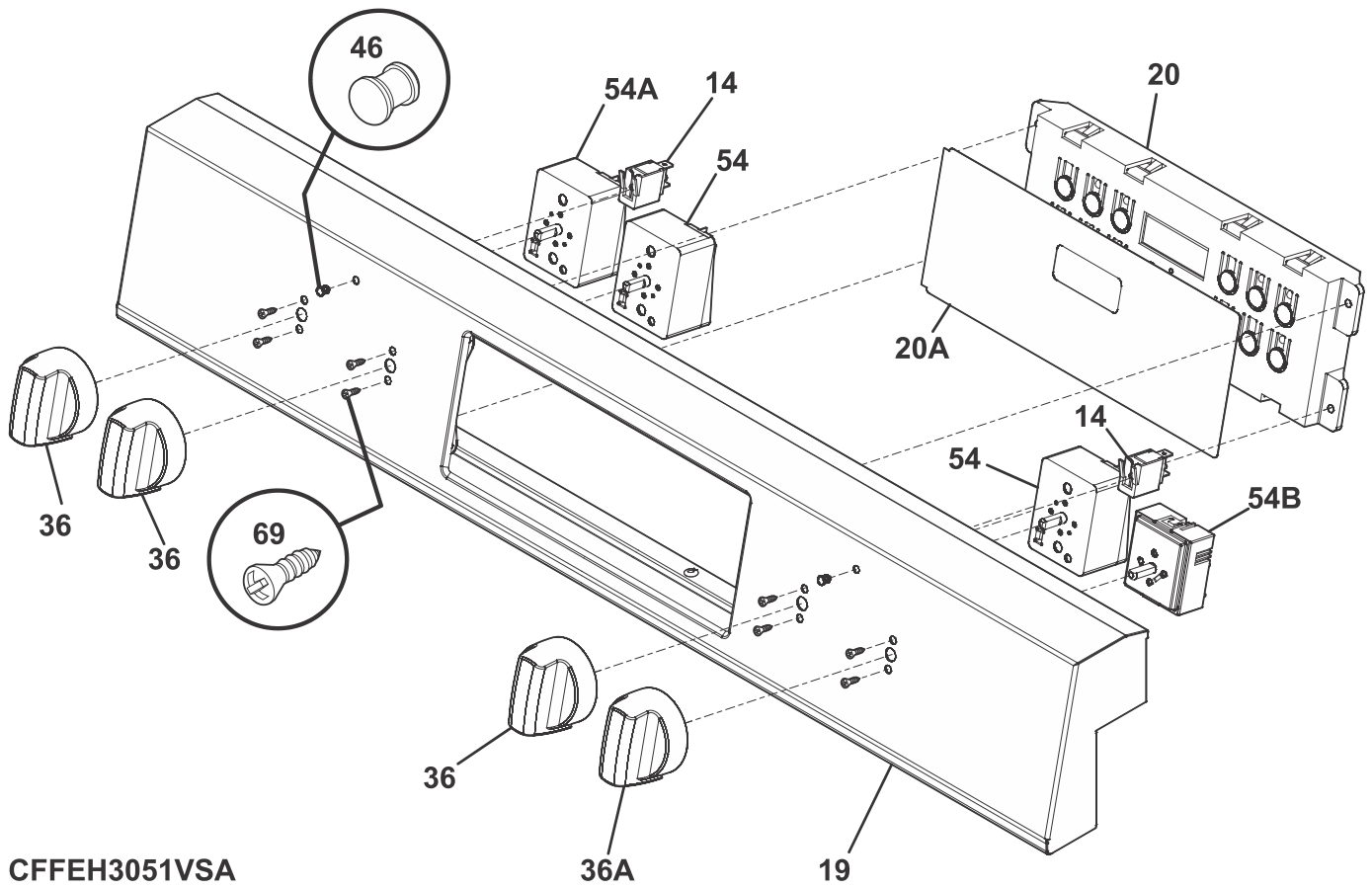
P.O. BOX 8020
CHARLOTTE, NC 28262

Publication No.
5995712907
19/03/12
(EN/SERVICE/ECL)
369

30-INCH FREE- STANDING ELECTRIC RANGE

Model No.
FFEH3051V

BACKGUARD

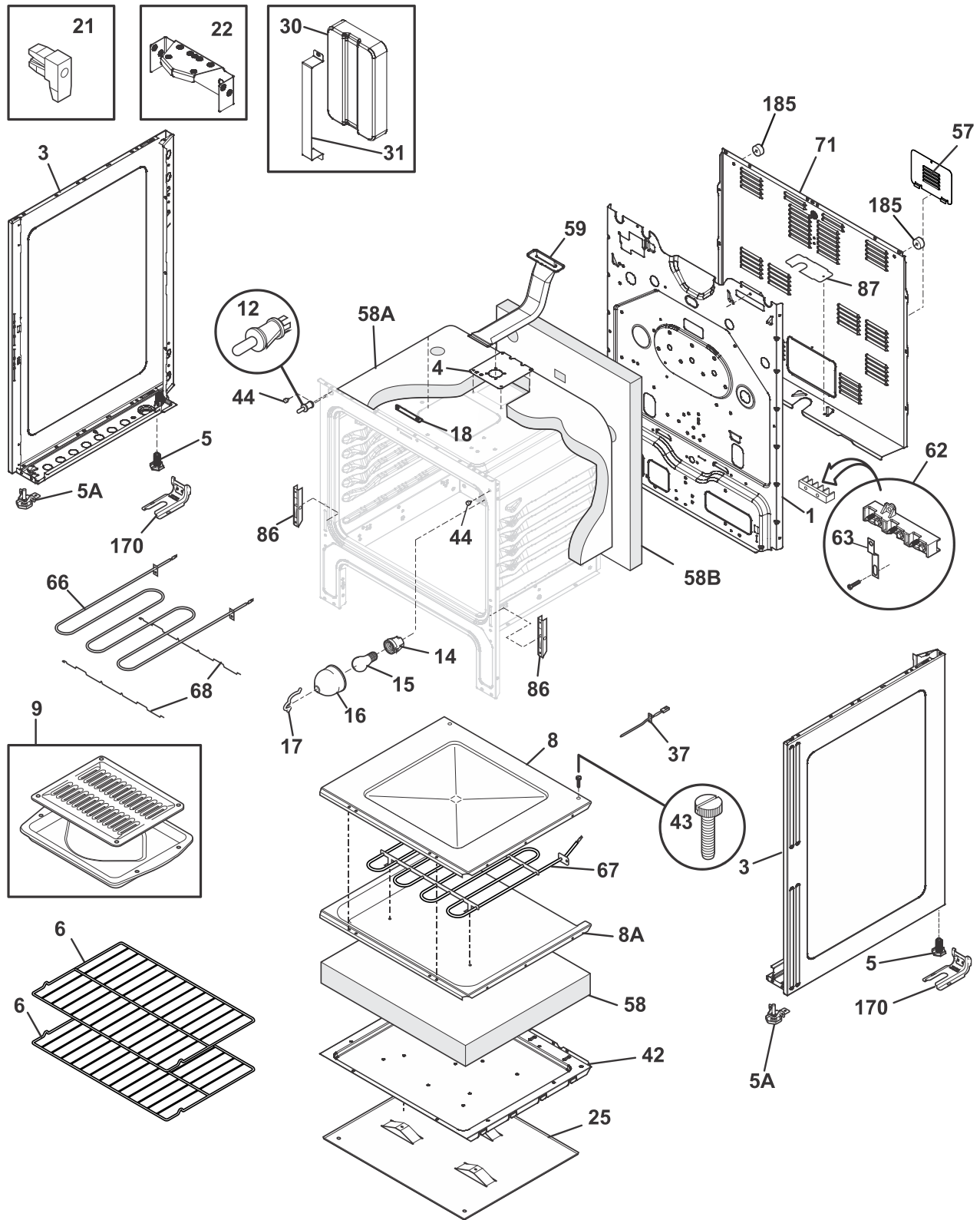


CFFEH3051VSA

BACKGUARD

POS. NO	PART NO.	DESCRIPTION
14 #	316022500	Light/Lamp, indicator, black, 125 V
19	5304520366	Control Panel, stainless
*	5304520393	Spacer, foam block, 2" x 1", w/adhesive
20 #	5304515464	Controller, electronic, ES332
20A	316419387	Overlay, clock, black, ES332
36	5304514116	Knob, infinite switch, stainless, single
36A	5304514117	Knob, infinite switch, stainless, dual
46	316557300	Lens-light/lamp, indicator, clear
54 #	316436000	Switch, infinite, small element
54A#	316436001	Switch, infinite, large element
54B#	316238202	Switch, infinite radian, dual
69	5303288565	Screw, truss sqdr, 8-32 x 3/16, switch mtg
* #	5304515471	Harness, wiring, backslash
*	316021109	Screw, 8-18 x 0.5, chrome

BODY



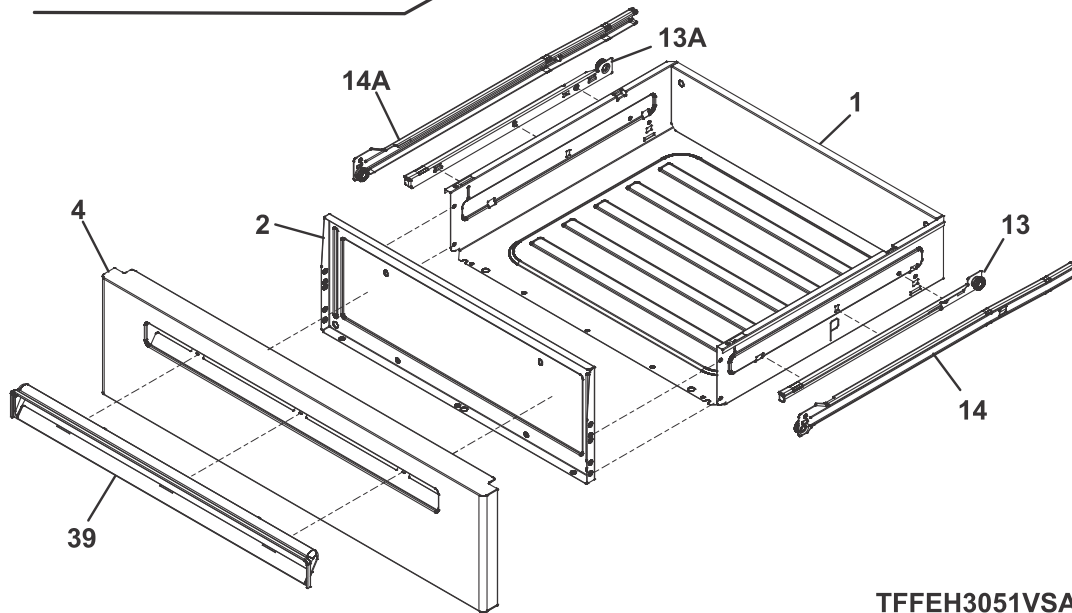
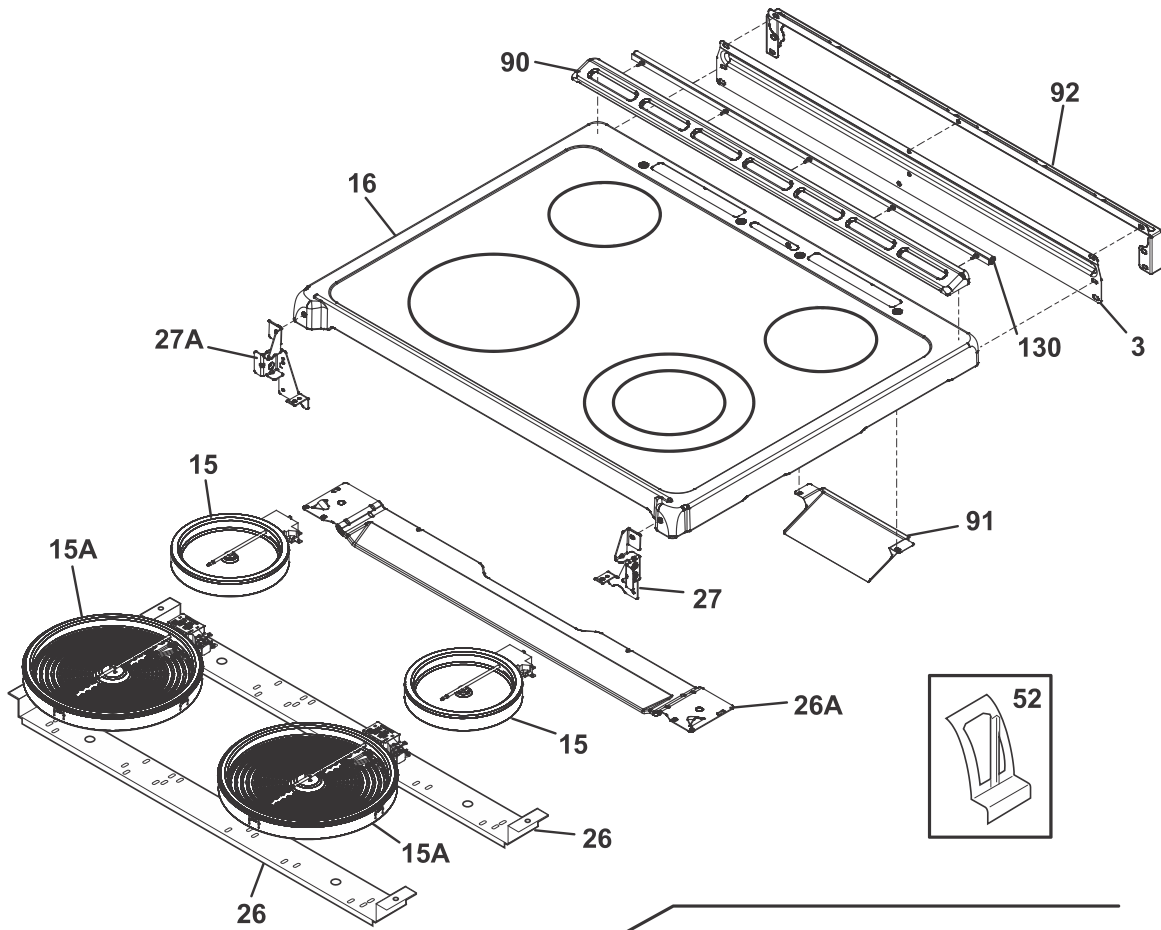
*NOTE: Oven Liner N/A
Ass. du four N/A*

VFFEH3051VSA

BODY

POS. NO	PART NO.	DESCRIPTION
1	5304514161	Back, main
3	316400136	Panel, body side, black RH
3	316400137	Panel, body side, black, LH
4	5304514136	Plate, oven vent
4*	297174300	Screw, self pierce, #8, 18x.63
5	316272900	Screw, leveling, plastic, rear, (2)
5A	5304509869	Leveling Leg Assy, metal, front, (2), bracket & leg
*	316021132	Screw, 8-18 X 11/16, black, (3)
6	316496201	Rack, oven
8	316400601	Panel, oven bottom
8*	316064600	Support, oven bottom
8A	316411106	Base, bake element
9	5304494997	Broil Pan Kit, pan & insert, slate blue, Optional, accessory
12 #	316445501	Switch, oven light, door frame
14 #	316116400	Receptacle, oven light
15 #	316538901	Lamp, oven light
16	318406100	Lens, oven light, glass
17	316087500	Retainer, lens
18	5304520383	Cover, front frame
*	5303285179	Screw, wafer head, 8-32T x 0.500, black, 44*
21	316408000	Clip, bodyside
22	5304514125	Bracket, support, body side, (2)
22*	316279600	Screw, bracket, stiffener, (4)
25	316406200	Shield, heat, lower
30	5304511083	Counterweight, concrete block
31	5304511084	Bracket, concrete block
37 #	316490003	Probe, oven temp
42	316400701	Shield, wool, lower
43	3131732	Screw, 8-18 x 1.438, oven bottom
44	316517600	Bumper, front, main
57	316283600	Cover, access
58	316403802	Insulation, oven sump
58A	316403700	Insulation, oven wrapper
58B	316403600	Insulation, oven back
59	5304514160	Tube, oven vent, upper
62 #	5303935271	Terminal Block Kit
62*	316001003	Screw, ground wire
62*	316205500	Nut, hex flange, 3/8 10-32
62*	316542200	Insulator
63	316542600	Plate, grounding strap
66 #	316203301	Element, broil
67 #	316413800	Element, bake, hidden
*	5303271648	Screw, wafer hd sq dr, 8-18AB x 0.5
68	316429100	Support, element, broil
71	316283204	Shield, rear wall
86	316441300	Receptacle, hinge
*	316418900	Screw, sims lp, #8-32 x 5/16", black
87	316081200	Bracket, cable mtg
170	316112005	Anti Tip Kit, assy, w/template
170*	316107200	Bracket, anti-tip
170*	316116000	Screw, concrete, 1.75", anti-tip brkt
170*	316541700	Template, anti-tip
185	318531800	Spacer, oven shield, (2)
* #	5304515472	Harness, wiring, main
*	316021105	Screw, hex head cup pt, 8-18 x 0.375, black
*	316021109	Screw, 8-18 x 0.5, chrome
*	316089500	Screw, 10-16 x .486
*	316260800	Screw-shoulder, w/shoulder, #8-18 x 1/2"
*	5303288566	Screw, TR HD SQD AB, 8-18 x 0.25, (8)

TOP/DRAWER

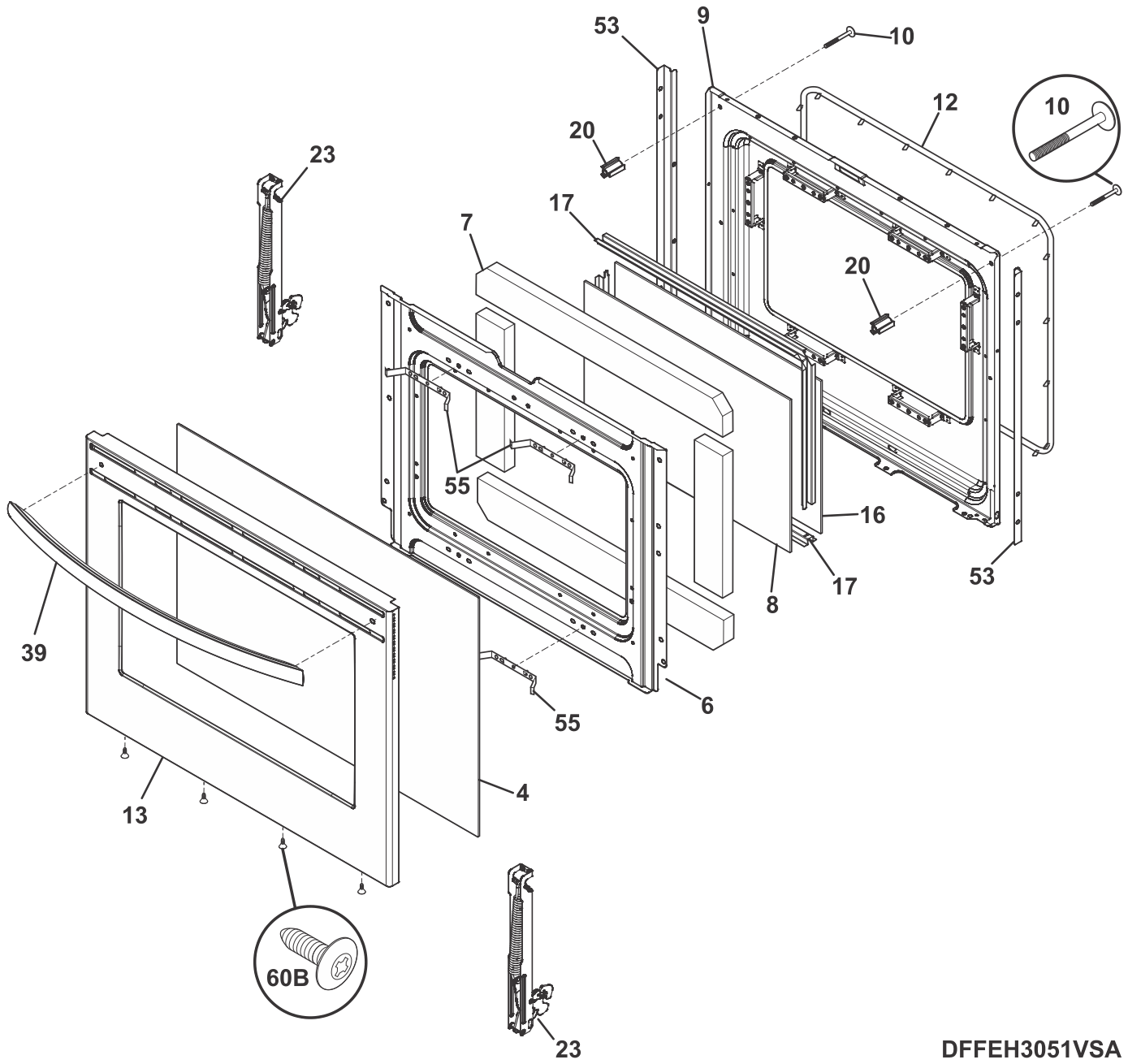


TFFEH3051VSA

TOP/DRAWER

POS. NO	PART NO.	DESCRIPTION
1	316408706	Drawer, utility
*	316089500	Screw, 10-16 x .486
2	316403200	Liner, drawer
3	5304514133	Shield, rear wall, upper
4	5304510527	Panel, drawer, stainless
13	5304517905	Glide, drawer, black, RH inner
13A	5304517903	Glide, drawer, black, LH inner
14	5304517904	Glide, drawer, black, RH outer
14A	5304517902	Glide, drawer, black, LH outer
15 #	318178110	Element, surface, 6", 1200, (2), radiant
15A#	316282000	Element, dual, 9"/6", surface, 3000W, quick boil
16	5304515481	Smoothtop, assembly, glass/steel, black
26	5304512926	Channel, element support
26A	5304514126	Bracket, support, rear, chassis
27	5304514123	Bracket, mounting, RH, cooktop
27A	5304514124	Bracket, mounting, LH, cooktop
*	5303285179	Screw, wafer head, 8-32T x 0.500, black, 44*
39	5304511879	Handle Insert, drawer
52	316461700	Clip, element mtg
52*	5308014215	Screw, 6-20 x 0.312
90	5304514157	Trim, vent, black, rear
91	5304514181	Deflector, moisture, (2)
92	5304520261	Rear Filler Kit, FCFS range, black
130	808931802	Seal, maintop, silicone, rear
* #	5304515473	Harness, wiring, surface
*	316021105	Screw, hex head cup pt, 8-18 x 0.375, black
*	316021109	Screw, 8-18 x 0.5, chrome

DOOR

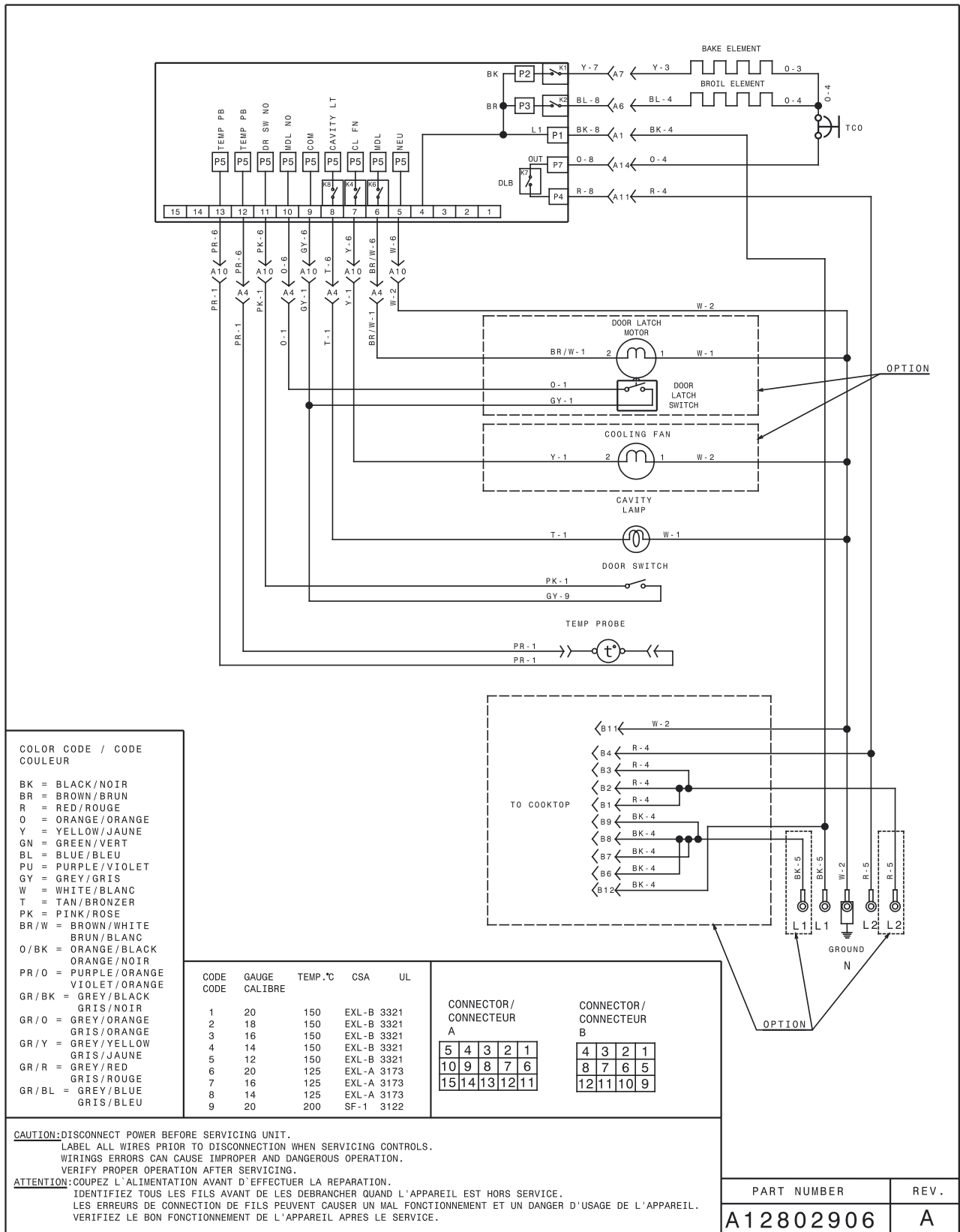


DFFEH3051VSA

DOOR

POS. NO	PART NO.	DESCRIPTION
4	316452774	Glass, oven door, outer, w/foil
6	316402315	Shield, wool
7	316403900	Insulation, oven door
8	5304503232	Glass, oven door, inner
9	316423807	Liner-oven door
10	316439505	Screw, handle mtg., #10-24 x 2, (2)
12	5304498835	Seal, oven door
13	316604001	Panel, oven door, stainless
16	316117503	Glass, oven door, inner, HRC1
17	5304504811	Spacer, glass
20	316284102	Spacer, door handle, (2)
23	316575917	Hinge, oven door, red
23*	316418900	Screw, sims lp, #8-32 x 5/16", black
39	5304507752	Handle, door, stainless
53	316408101	Shield, filler, door, (2)
*	5303285179	Screw, wafer head, 8-32T x 0.500, black, 44*
55	316408301	Bracket, glass support, (4)
60B	316021109	Screw, 8-18 x 0.5, chrome
*	316483102	Label, anti-tip

WIRING DIAGRAM



COLOR CODE / CODE COULEUR

- BK = BLACK/NOIR
- BR = BROWN/BRUN
- R = RED/ROUGE
- O = ORANGE/ORANGE
- Y = YELLOW/JAUNE
- GN = GREEN/VERT
- BL = BLUE/BLEU
- PU = PURPLE/VIOLET
- GY = GREY/GRIS
- W = WHITE/BLANC
- T = TAN/BRONZER
- PK = PINK/ROSE
- BR/W = BROWN/WHITE BRUN/BLANC
- O/BK = ORANGE/BLACK ORANGE/NOIR
- PR/O = PURPLE/ORANGE VIOLET/ORANGE
- GR/BK = GREY/BLACK GRIS/NOIR
- GR/O = GREY/ORANGE GRIS/ORANGE
- GR/Y = GREY/YELLOW GRIS/JAUNE
- GR/R = GREY/RED GRIS/ROUGE
- GR/BL = GREY/BLUE GRIS/BLEU

CODE CODE	GAUGE CALIBRE	TEMP.°C	CSA	UL
1	20	150	EXL-B	3321
2	18	150	EXL-B	3321
3	16	150	EXL-B	3321
4	14	150	EXL-B	3321
5	12	150	EXL-B	3321
6	20	125	EXL-A	3173
7	16	125	EXL-A	3173
8	14	125	EXL-A	3173
9	20	200	SF-1	3122

CONNECTOR / CONNECTEUR

A

5	4	3	2	1
10	9	8	7	6
15	14	13	12	11

CONNECTOR / CONNECTEUR

B

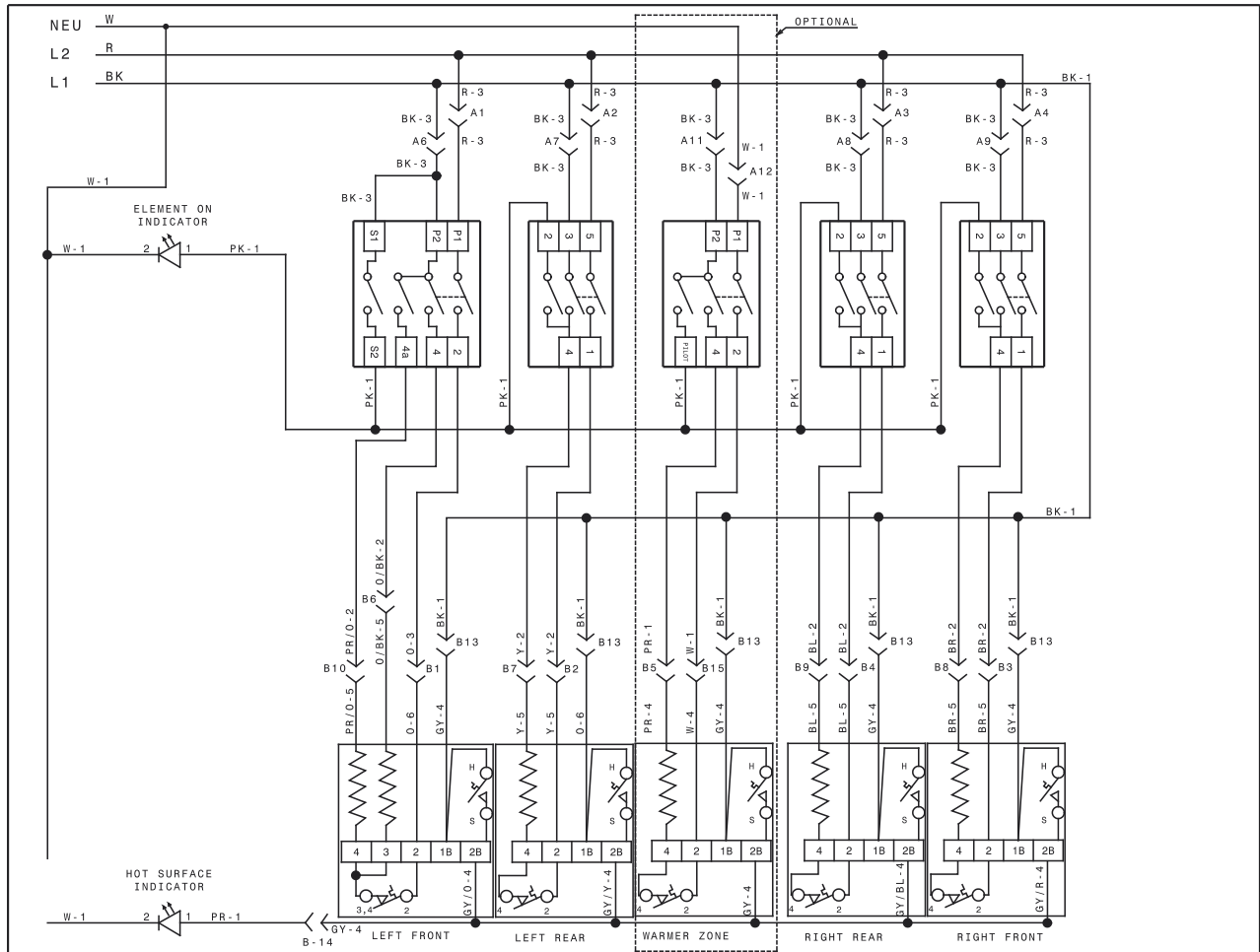
4	3	2	1
8	7	6	5
12	11	10	9

CAUTION: DISCONNECT POWER BEFORE SERVICING UNIT. LABEL ALL WIRES PRIOR TO DISCONNECTION WHEN SERVICING CONTROLS. WIRINGS ERRORS CAN CAUSE IMPROPER AND DANGEROUS OPERATION. VERIFY PROPER OPERATION AFTER SERVICING.

ATTENTION: COUPEZ L'ALIMENTATION AVANT D'EFFECTUER LA REPARATION. IDENTIFIEZ TOUS LES FILS AVANT DE LES DEBRANCHER QUAND L'APPAREIL EST HORS SERVICE. LES ERREURS DE CONNEXION DE FILS PEUVENT CAUSER UN MAL FONCTIONNEMENT ET UN DANGER D'USAGE DE L'APPAREIL. VERIFIEZ LE BON FONCTIONNEMENT DE L'APPAREIL APRES LE SERVICE.

PART NUMBER	REV.
A12802906	A

WIRING DIAGRAM



COLOR CODE / CODE COULEUR

BK = BLACK/NOIR
 BR = BROWN/BRUN
 R = RED/ROUGE
 O = ORANGE/ORANGE
 Y = YELLOW/JAUNE
 GN = GREEN/VERT
 BL = BLUE/BLEU
 PU = PURPLE/VIOLET
 GY = GREY/GRIS
 W = WHITE/BLANC
 T = TAN/BRONZER
 PK = PINK/ROSE
 BR/W = BROWN/WHITE
 BRUN/BLANC
 O/BK = ORANGE/BLACK
 ORANGE/NOIR
 PR/O = PURPLE/ORANGE
 VIOLET/ORANGE
 GR/BK = GREY/BLACK
 GRIS/NOIR
 GR/O = GREY/ORANGE
 GRIS/ORANGE
 GR/Y = GREY/YELLOW
 GRIS/JAUNE
 GR/R = GREY/RED
 GRIS/ROUGE
 GR/BL = GREY/BLUE
 GRIS/BLEU

CONNECTOR / CONNECTEUR A				CONNECTOR / CONNECTEUR B				
4	3	2	1	5	4	3	2	1
8	7	6	5	10	9	8	7	6
12	11	10	9	15	14	13	12	11

CODE CODE	GAUGE CALIBRE	TEMP. °C	CSA	UL
1	18	150	EXL-B	3321
2	16	150	EXL-B	3321
3	14	150	EXL-B	3321
4	18	200	SEW-1	3122
5	16	200	SEW-1	3122
6	14	200	SEW-2	3071
7	18	200	SEW-2	3071

CAUTION: DISCONNECT POWER BEFORE SERVICING UNIT.
 LABEL ALL WIRES PRIOR TO DISCONNECTION WHEN SERVICING CONTROLS.
 WIRING ERRORS CAN CAUSE IMPROPER AND DANGEROUS OPERATION.
 VERIFY PROPER OPERATION AFTER SERVICING.

ATTENTION: COUPEZ L'ALIMENTATION AVANT D'EFFETUER LA REPARATION.
 IDENTIFIEZ TOUS LES FILS AVANT DE LES DEBRANCHER QUAND L'APPAREIL EST HORS SERVICE.
 LES ERREURS DE CONNECTION DE FILS PEUVENT CAUSER UN MAL FONCTIONNEMENT ET UN DANGER D'USAGE DE L'APPAREIL.
 VERIFIEZ LE BON FONCTIONNEMENT DE L'APPAREIL APRES LE SERVICE.

PART NUMBER	REV.
A12802901	A