

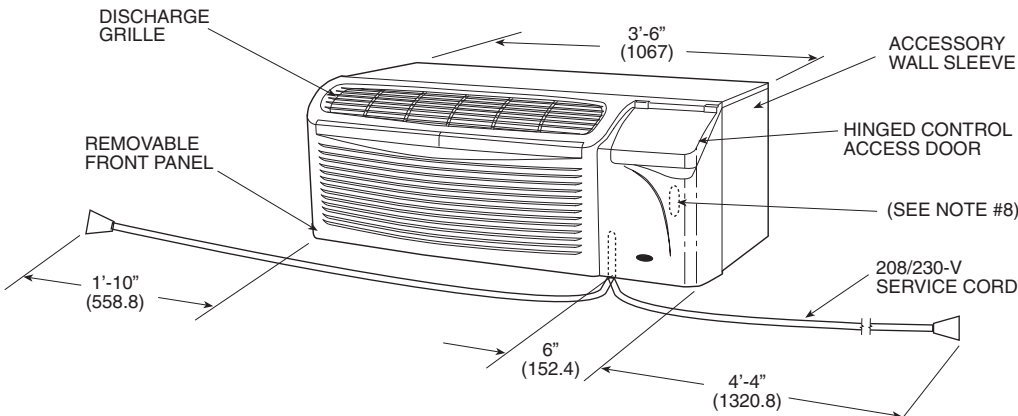
# DIMENSION DRAWINGS AND INSTALLATION DATA — NEW CONSTRUCTION

## TYPICAL WALL INSTALLATION

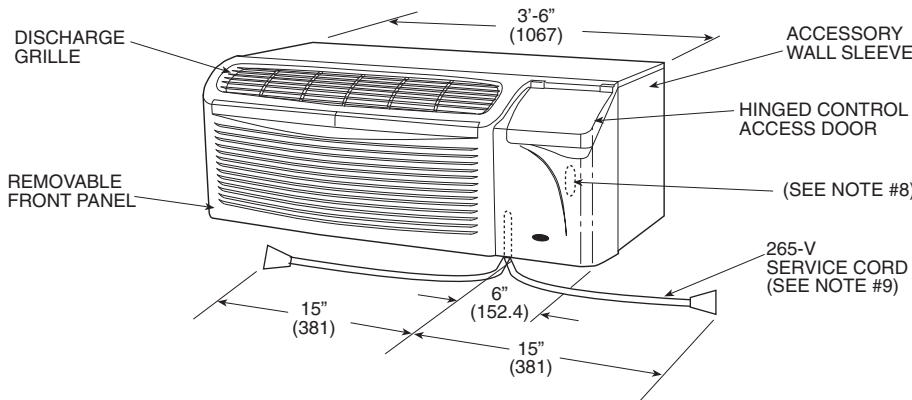
Proper building practices must be used when constructing a wall opening to support a PTAC wall sleeve and chassis.

If practices are unknown, consult your local architect or building contractor.

Installed wall sleeve must be level from side to side and front to back.



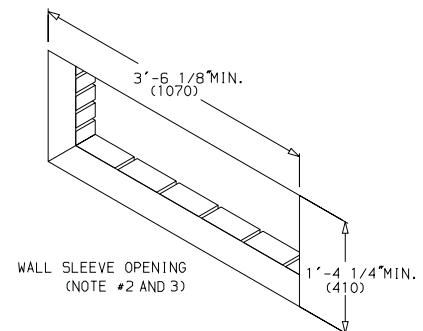
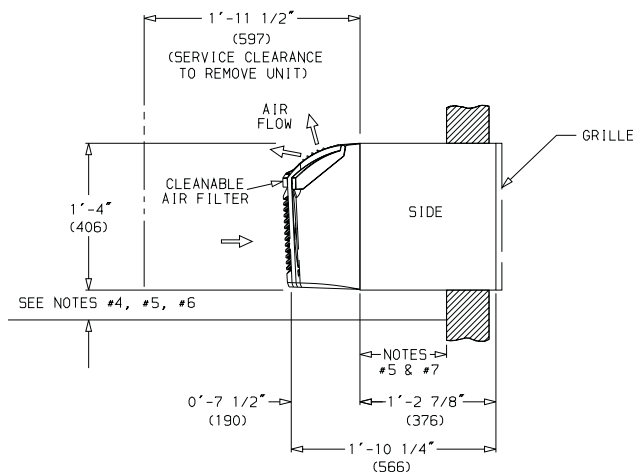
208/230-V UNITS



265-V UNITS

### NOTES:

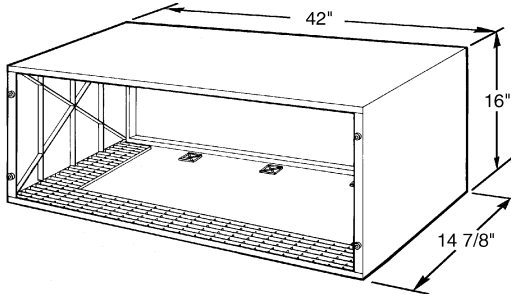
1. Dimensions in parenthesis are in millimeters.
2. Minimum opening sizes apply to all wall openings.
3. Proper building practices must be used when constructing a wall opening to support a PTAC wall sleeve and chassis. If practices are unknown consult your local architect or building contractor.
4. Installed wall sleeve must be level from side to side and front to back (do not use rails to level sleeve).
5. If wall sleeve extends into the room more than 4-in., an accessory subbase or field fabricated front support should be used to prevent wall sleeve from tipping forward.
6. For all applications with an accessory subbase, wall sleeve must extend into room 3/4-in. (83 mm) minimum and 3 1/4-in. (83 mm) minimum from floor.
7. For all applications with an accessory lateral duct, sleeve must extend into the room 3-in. (76.2 mm) minimum. In applications where the sleeve will not extend a minimum 3-in., the lateral duct mounting brackets must be mounted on the wall sleeve prior to wall sleeve installation.
8. Remote control models, "RC" and "RP" units, use low voltage connections (24 volt AC).
9. 265 volt cord connected units must plug into a 265 volt electrical subbase per UL requirement (or hardwire can be used).
10. The 265 volt electrical cord is approximately 15-in. long from where it exits the front panel.



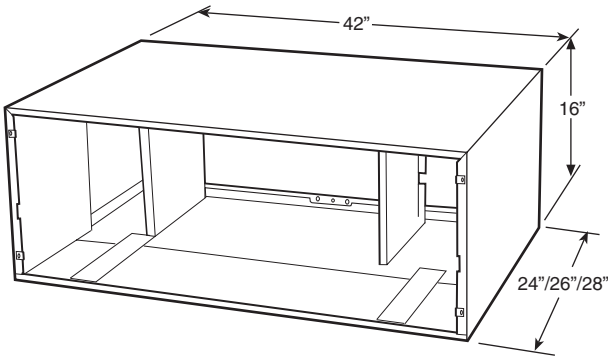
52P and 52C Dimension Drawing

# DIMENSION DRAWINGS AND INSTALLATION DATA — NEW CONSTRUCTION (cont)

## WALL SLEEVE MOUNTING DIMENSIONS FOR STANDARD AND ACCESSORY GRILLES



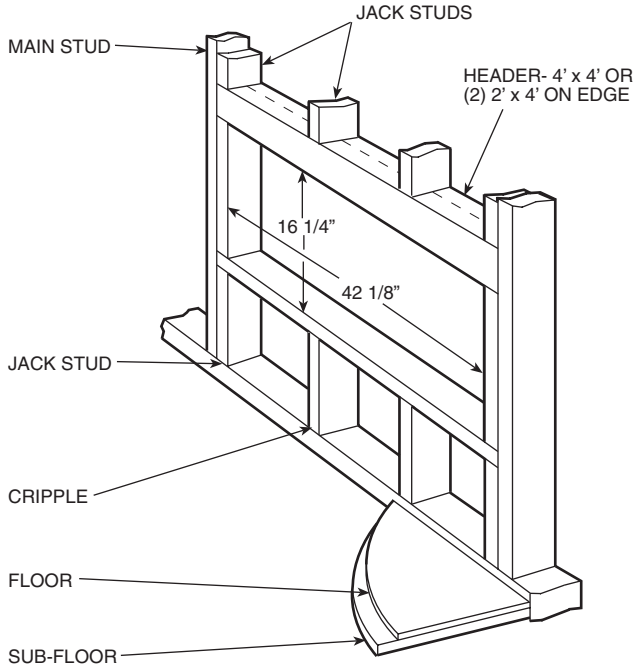
**Standard Polymer Non-Insulated Wall Sleeve  
Standard Polymer Insulated Wall Sleeve  
Standard Metal Insulated Wall Sleeve**



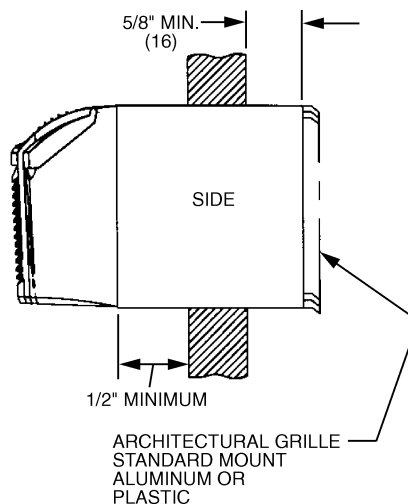
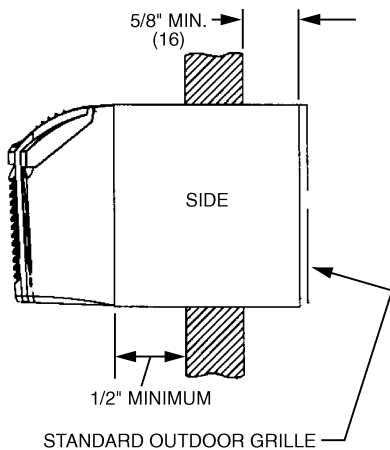
**Extended Metal Insulated Wall Sleeve**

**NOTES (ALL SLEEVES):**

1. Never install fasteners through bottom of sleeve.
2. Never use rails to level sleeve.

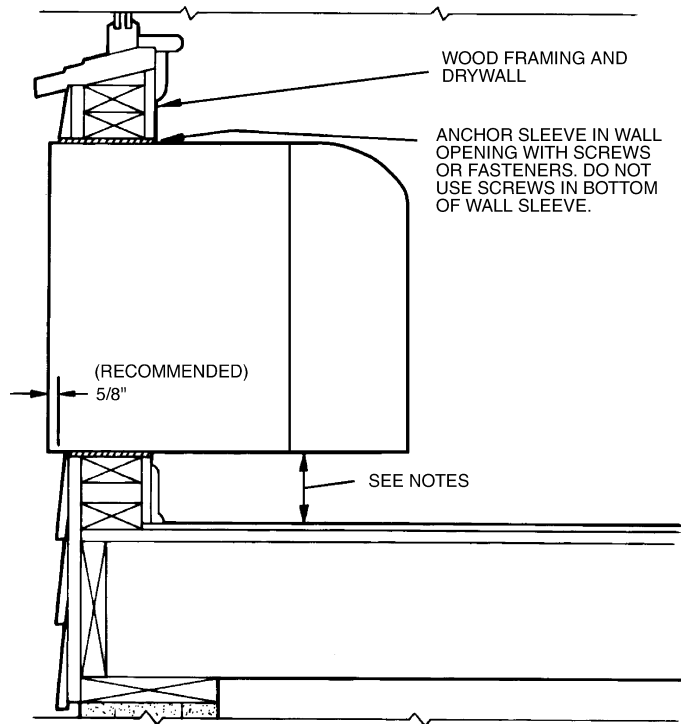


**Framing and Minimum Wall Sleeve Opening**



**Wall Sleeve Mounting (All Models)**

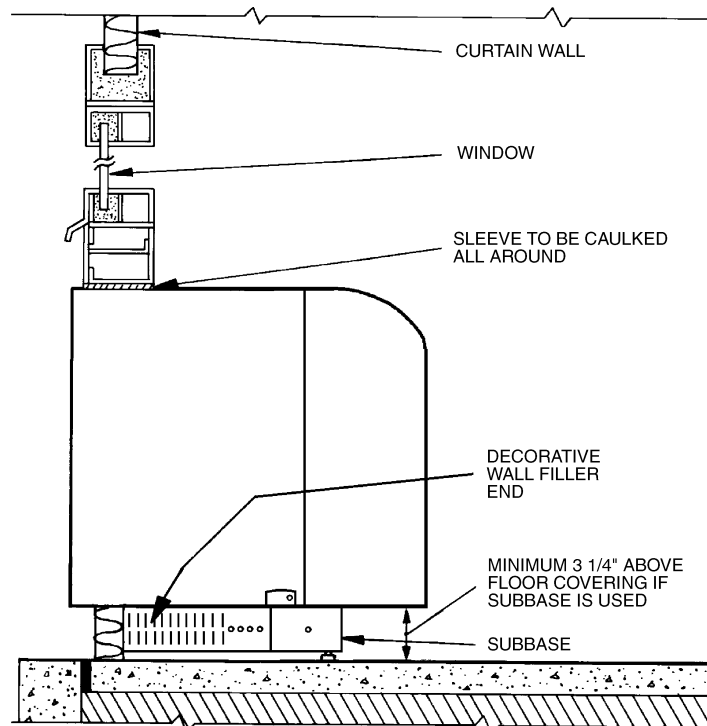
# TYPICAL WALL INSTALLATION



**NOTES:**

1. Sleeve may be flush mounted to floor, but front panel may have to be notched to accommodate service cord.
2. If more than 4 in. of sleeve projects into room, an accessory subbase must be used for support.
3. For walls 2 in. thick or less, an accessory subbase must be used for support.
4. Caulk around sleeve on both indoor and outdoor sides.

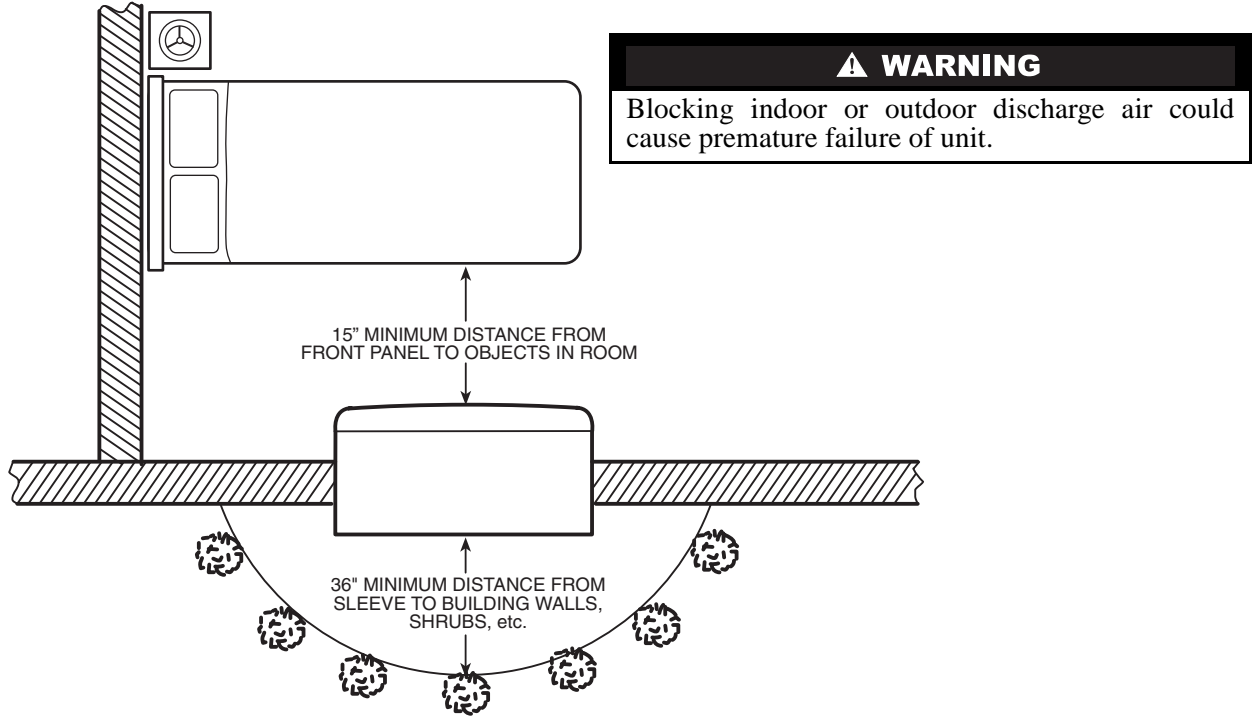
**Typical Wall Sleeve Installation**



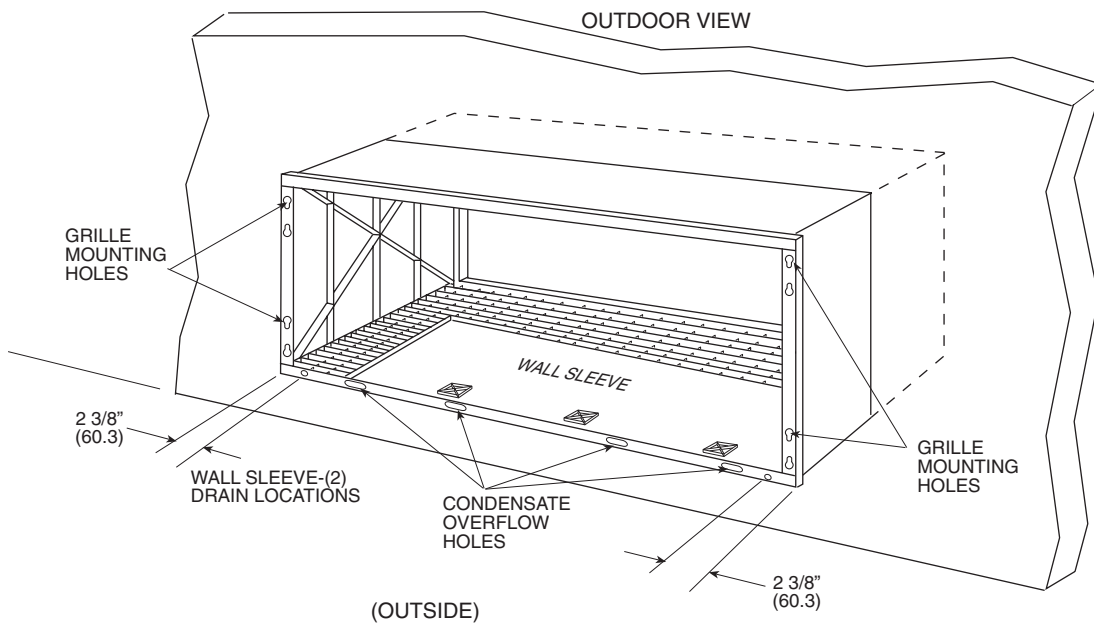
**Typical Curtain Wall Installation (All Models)**

# DIMENSION DRAWINGS AND INSTALLATION DATA — NEW CONSTRUCTION (cont)

## MINIMUM CLEARANCE FOR INDOOR AND OUTDOOR DISCHARGE AIR

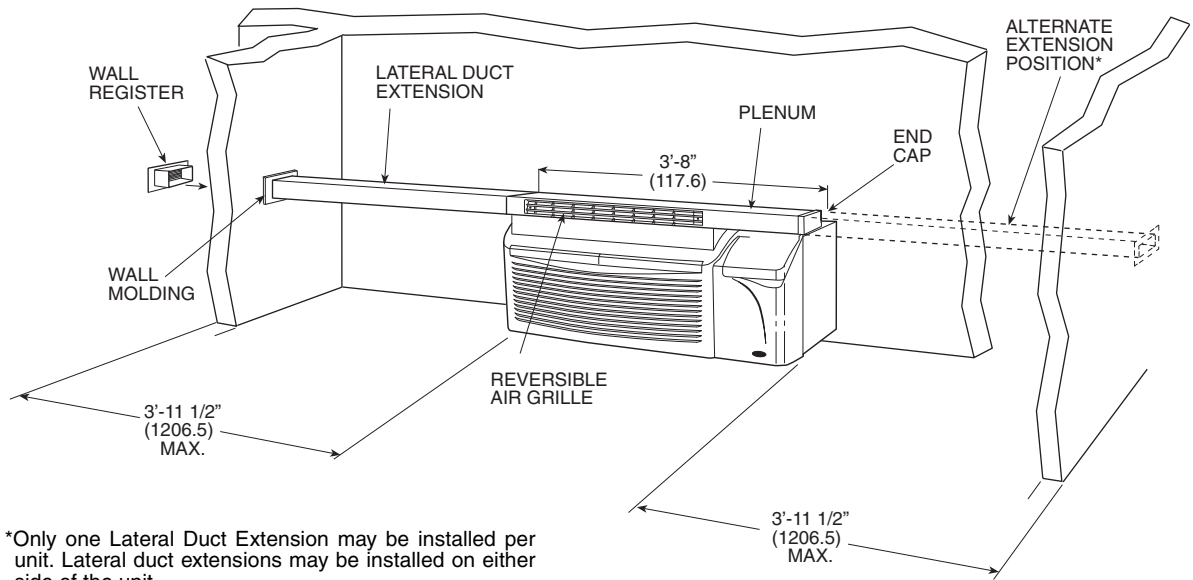


**52P and 52C Indoor and Outdoor Discharge Air Circulation**

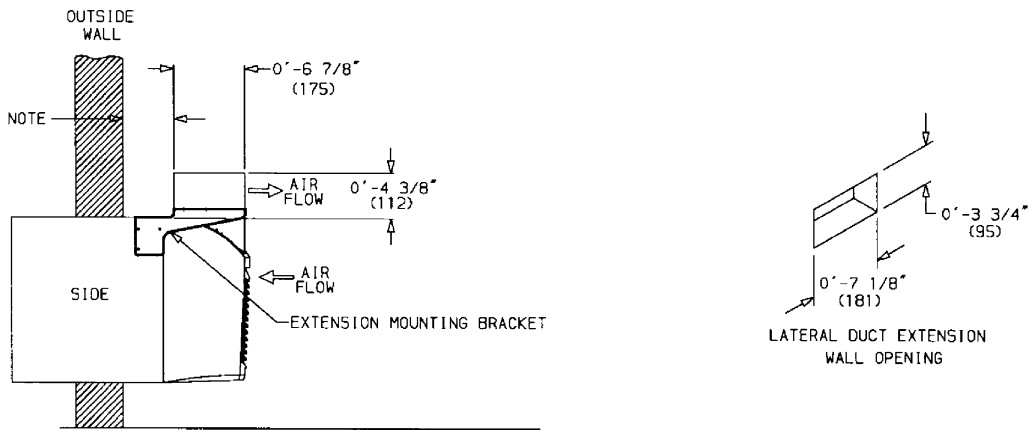


**Back of Polymer Wall Sleeve**

# TYPICAL LATERAL DUCT INSTALLATION



\*Only one Lateral Duct Extension may be installed per unit. Lateral duct extensions may be installed on either side of the unit.

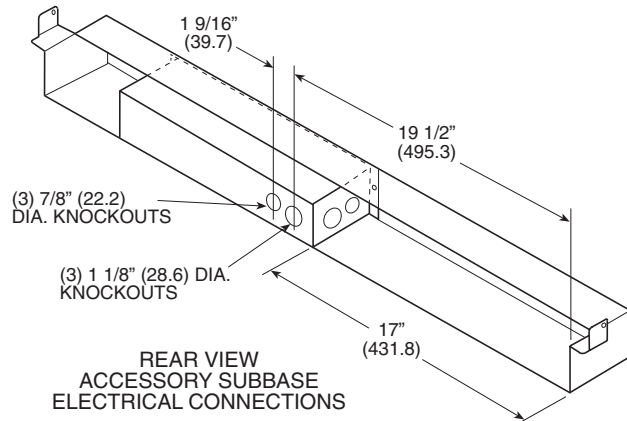
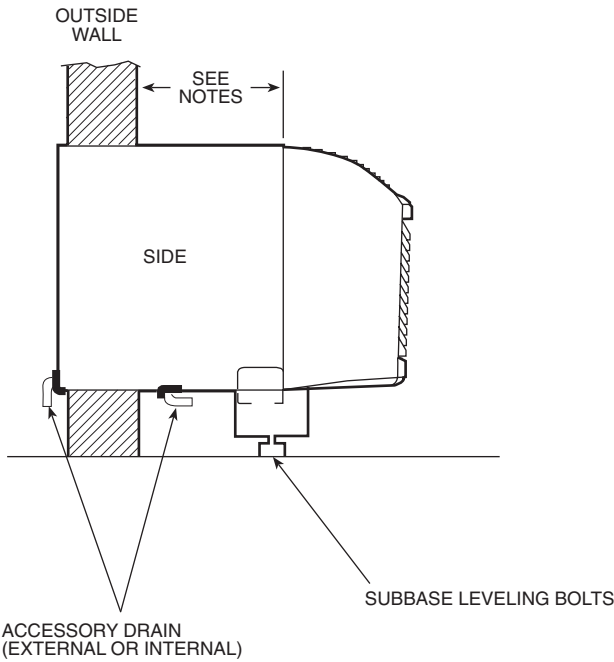
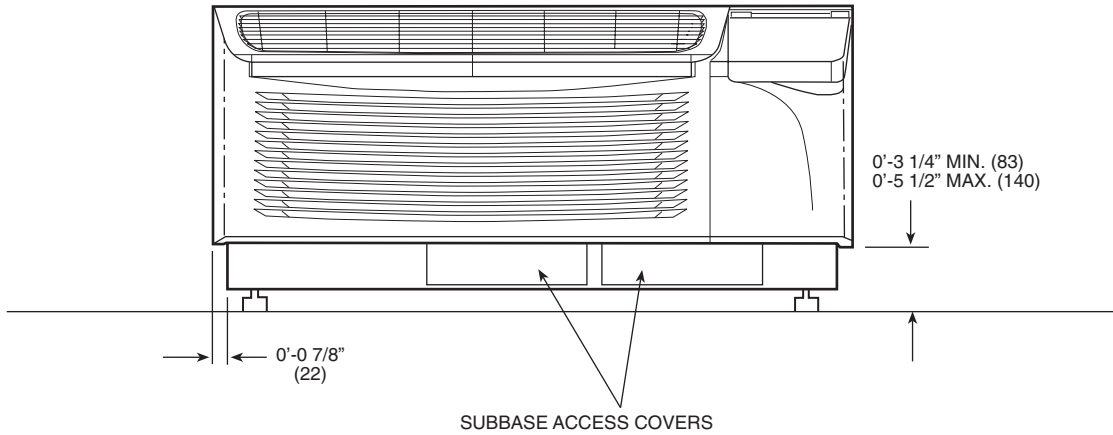


NOTE: For all applications with an accessory lateral duct, sleeve must extend into the room a minimum of 3 inches. In applications where the sleeve will not extend a minimum of 3 in., the lateral duct mounting brackets will need to be mounted on the sleeve prior to installation to the wall.

## 52P and 52C Lateral Duct

# DIMENSION DRAWINGS AND INSTALLATION DATA — NEW CONSTRUCTION (cont)

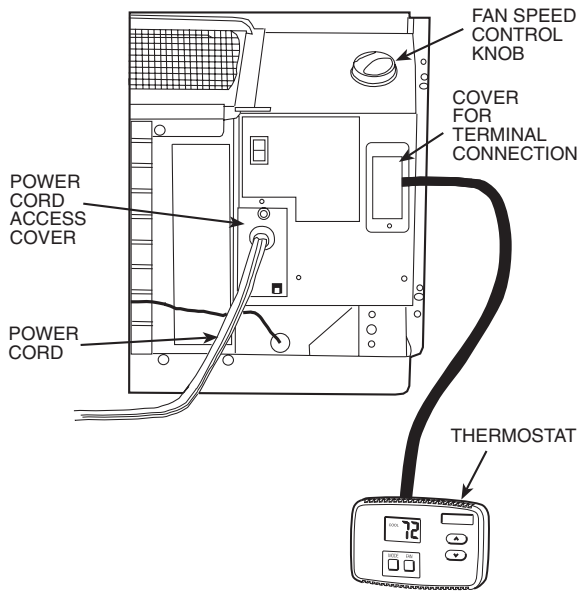
## 52P AND 52C WITH SUBBASE



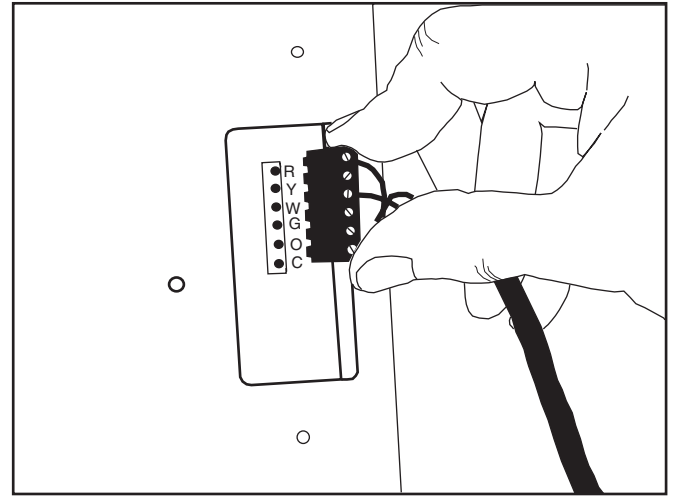
### NOTES:

1. Accessory subbase is required for applications where:
  - Wall sleeve extends 4 or more inches into the room.
  - Wall thickness is less than 2 inches.
  - All 265-v cord-connected applications.
2. For all applications with an accessory subbase:
  - Wall sleeve must extend 4 in. minimum into the room and 3 1/4 in. minimum above the floor.
  - Subbase height is adjustable from 3 1/4 in. minimum to 5 1/2 in. maximum above floor (including carpeting). Refer to wall sleeve installation instructions.

# WALL THERMOSTAT CONNECTIONS



**Control Box Terminal Cover for Wall Thermostat Models**



**Terminal Connector Removal and Replacement**