

FEATURED MODEL

441431 LINUS 1.8 PULL OUT w/
DUAL SPRAY in SATIN NICKEL

ADDITIONAL MODELS

441430 LINUS 1.8 PULL OUT w/
DUAL SPRAY in CHROME

FEATURES

- 140 degree radius swivel spout
- AB1953 compliant
- Dual spray function
- Solid brass body
- Ceramic disc cartridges
- Color coded hot & cold supply lines
- Durable spiral flexible pull-out spray hose
- 1.8 GPM flow rate saves 20% more water
- Installation in a 1-3/8" hole
- Lever can only be positioned on the right hand side and will require 2" off center for clearance of the backsplash

CODE/STANDARDS COMPLIANCE

ASME A112.18.1-2005
NSF 61 certified
NSF 61 ANEX G low lead requirements

AB1953 Lead Free

WARRANTY

BLANCO kitchen faucets in Chrome and Satin Nickel a LIMITED LIFETIME WARRANTY to be free of all manufacturing defects under normal use. A 5-YEAR LIMITED WARRANTY on all SILGRANIT color matching faucets. See our complete warranty for details.

While BLANCO endeavors to provide accurate information, all dimensions are nominal, cannot be gaurenteed, and are subject to change or cancellation. BLANCO assumes no responsibility for use of superseded or voided specifications.

JOB INFORMATION

Job Name: _____

Contact: _____

Date Specified: _____

Specifier: _____

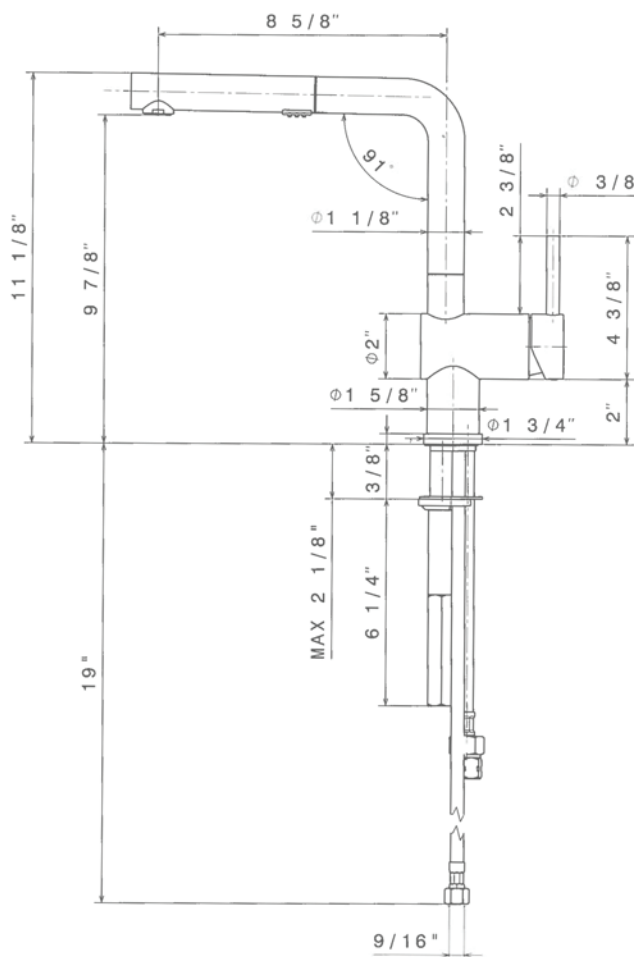
Contractor: _____

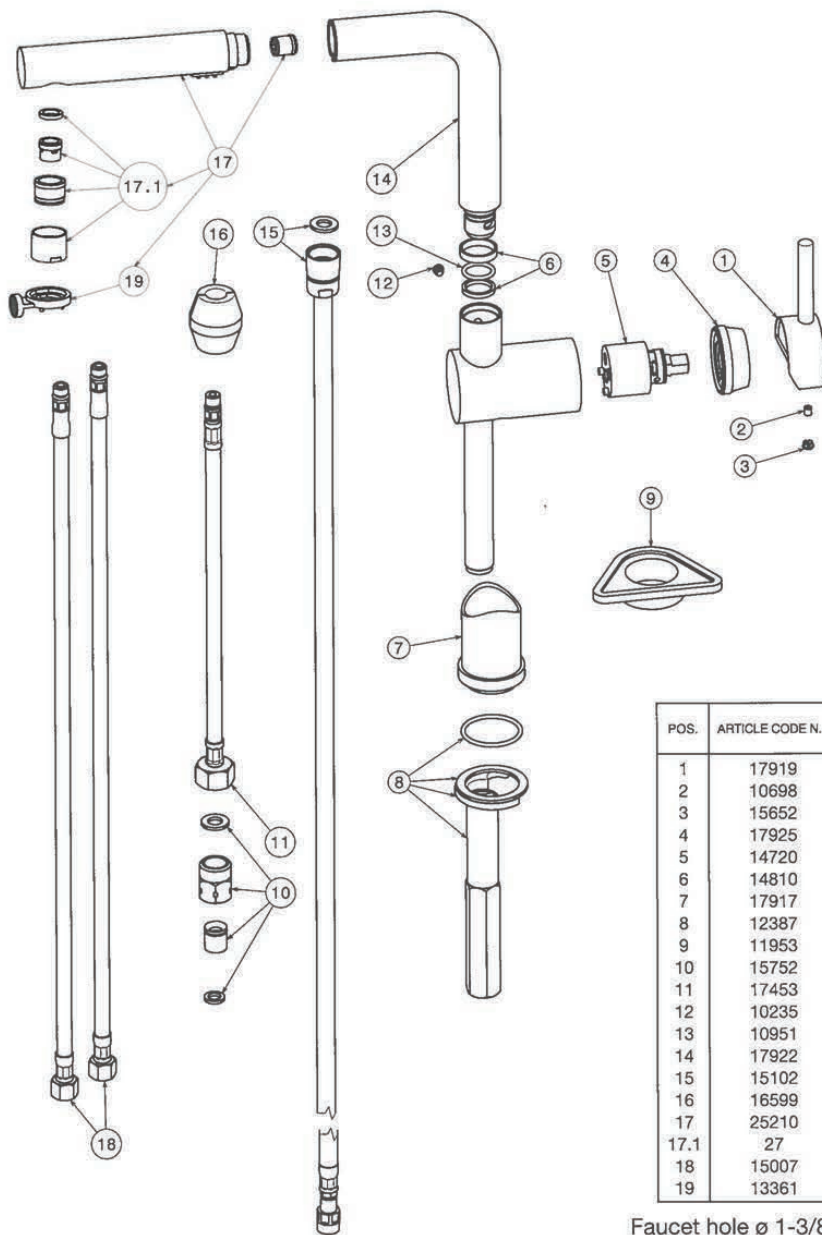


Model 441431 shown

NOMINAL DIMENSIONS

REACH	SPOUT HEIGHT	FAUCET HEIGHT
8-5/8"	9-13/16"	11-1/8"





Faucet hole ø 1-3/8"