

Overlay Door Panel Preparation and Installation Instructions

Overlay Door Panel

Door panel Preparation

A Full overlay door panel completely covers the door frame and handle to give you a built-in appearance. See your U-Line dealer for the optional Full Overlay Door Panel Kit.

Full Overlay Door Panel Kit Part Number

2175	Black	U-OL2175B
2175	White	U-OL2175W
2115 & 2160	Black	U-OL2115B
2115 & 2160	White	U-OL2115W

Included In Kit:

- 1x Replacement Handle
- 2x Pivot Plate
- 1x Overlay Cap
- 8x Nylon Spacers
- 2x 8-32 x 3/8" Screws
- 2x Hinge Plates
- 1x Door Closure
- 2x Pivot Posts
- 8x 8-32 x 1/2" Screws
- 8x #10 X 5/8" Wood Screws

IMPORTANT

- The door panel must not weigh more than 20lbs.
- It is important to ensure that all drilled holes are drilled to the correct depth in order to avoid splits in the wood when hardware is installed.
- Rear view of wood panel for left-hand hinge shown. Use mirror image for right hand hinges.
- Appliance will need up to 34 1/2" to the under side of the counter to leave room for leveling adjustments

1. Determine cabinet toe kick height, measure the difference between the surface the appliance will sit on and the bottom of the adjacent cabinetry. Adjust panel height according to the height of you cabinetry's Toe Kick.
2. Cut the overlay to the dimensions in **Table A & B**.
3. Drill hole for upper door hinge (top of panel)
0.177" diameter (#16 drill) x 1 1/16" deep (See diagram below)
4. Drill hole for lower door hinge 5/16" diameter x 1/4" deep (See diagram below)

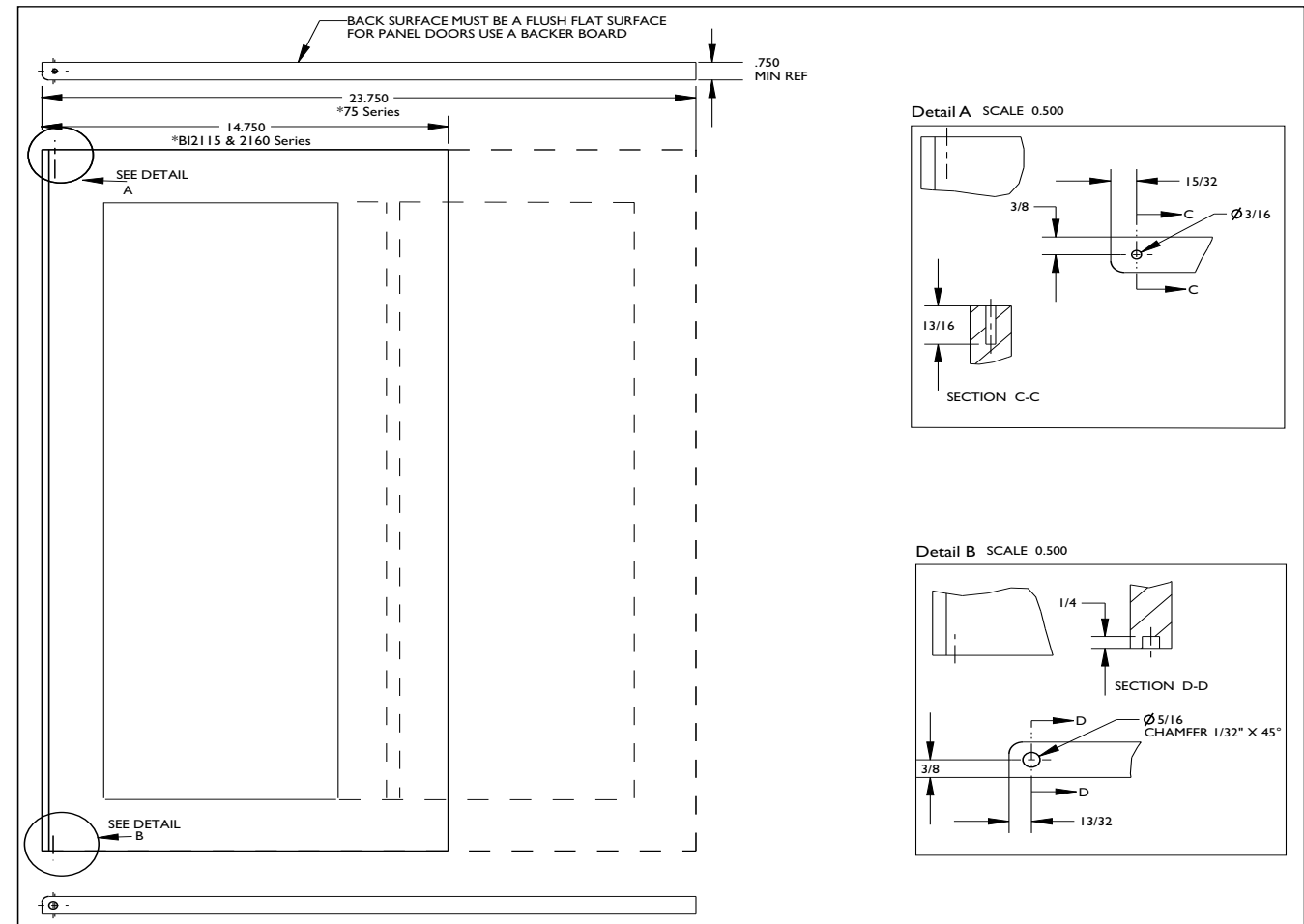
Table A (Width)

Model	Width
2175	23 3/4"
2115 & 2160	14 3/4"

Table B (Height)

Toe Kick	Height	Toe Kick	Height
3 3/4"	29 3/4"	4 1/4"	29 3/8"
3 7/8"	29 3/4"	4 3/8"	29 1/4"
4"	29 5/8"	4 1/2"	29 1/4"
4 1/8"	29 1/2"		

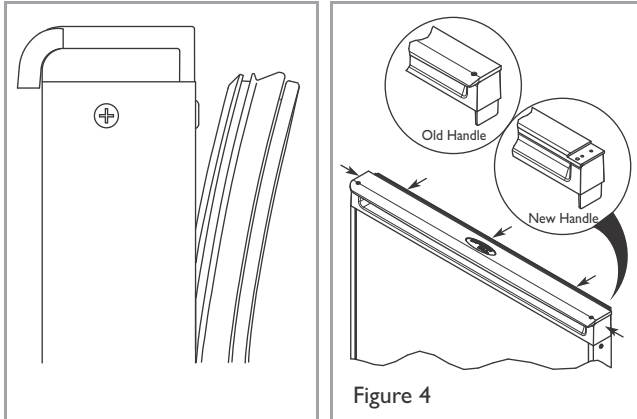
Note: **Table B** dimensions will vary based on the level of the floor. If floor is uneven, cut panel to the next longer dimension and adjust level legs to achieve proper fit



Installation Instructions

removing existing door

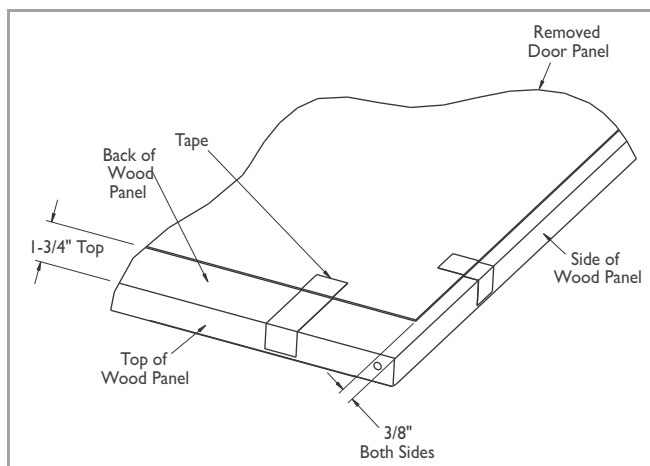
1. Remove the door shelves by first pulling shelves at a 45° angle, then straight out.
2. Remove the top hinge screw pin (Phillips screwdriver). Remove the door by tilting forward and lifting off the bottom hinge pin.
3. Pull door gasket out of the groove (top edge of door only). Start in the middle and pull outward, moving toward the edge. This may take some force



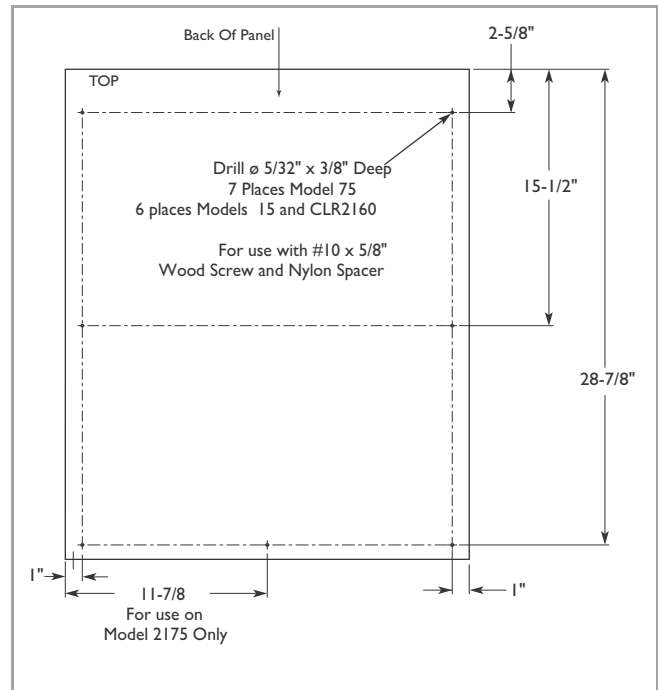
4. Remove the two screws located on both sides of the handle.
5. Remove the handle and discard. (This handle will be replaced with the overlay handle included in the Full Overlay Door Panel Kit).
6. Slide the existing door panel out of the door frame.

Attaching the Full Overlay Door Panel

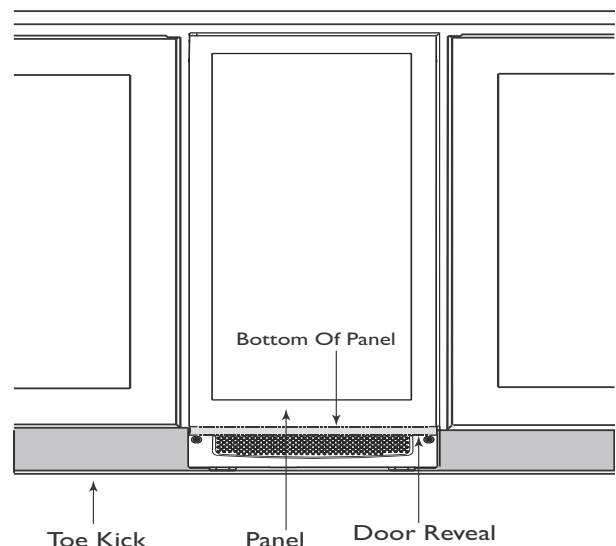
1. Place and tape the existing door panel on the back of the overlay panel. Center the panel, and align it 1 5/8" from the top. Drill holes through both panels see figures below. Remove tape adjoining the panels and enlarge the six holes in the steel (black/white vinyl color) panel using a 0.201" (#7) drill.

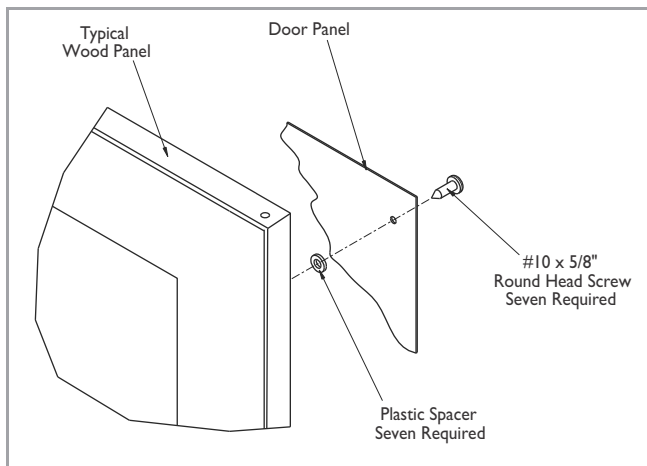


2. If a user supplied cabinet handle will be used, attach its hardware to the overlay panel at this time.
3. Attach the door panel to the overlay panel using #10 x 5/8" wood screws and nylon spacers. The nylon spacers fit between the overlay panel and the door panel as shown in the figure on the next page. The spacers allow the original door panel to slide back into the 1/4" thick door reveal.

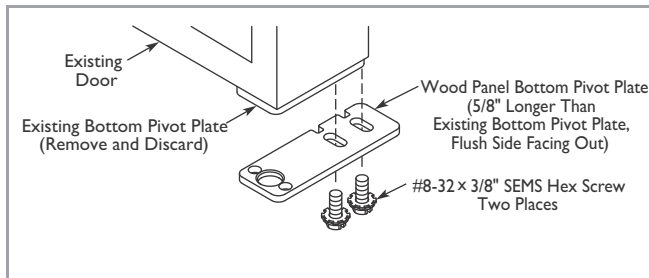
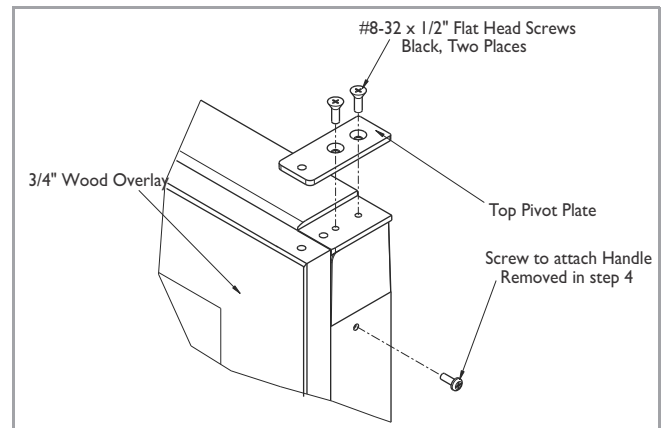


Note: The bottom of the panel will line up with the top of the cabinetry toe kick. Minor adjustments can be made using the leveler feet. Depending on the height of the toe kick, a small portion of the door may be visible beneath the panel.





3. Attach Overlay cap to door, opposite side of where hinges will be, see below.



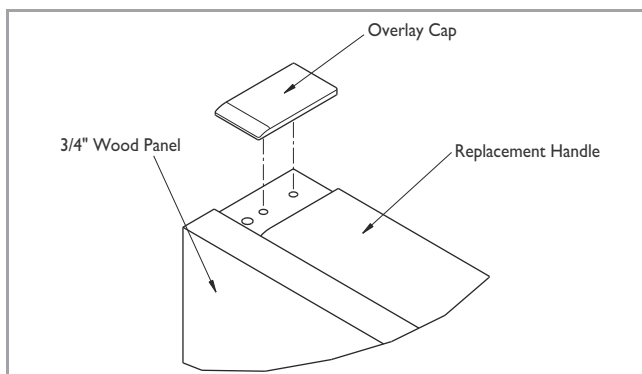
4. Remove the existing bottom pivot plate and replace with the Full Overlay pivot plate.

IMPORTANT

Door panel and overlay panel must be aligned properly or the door will not operate correctly.

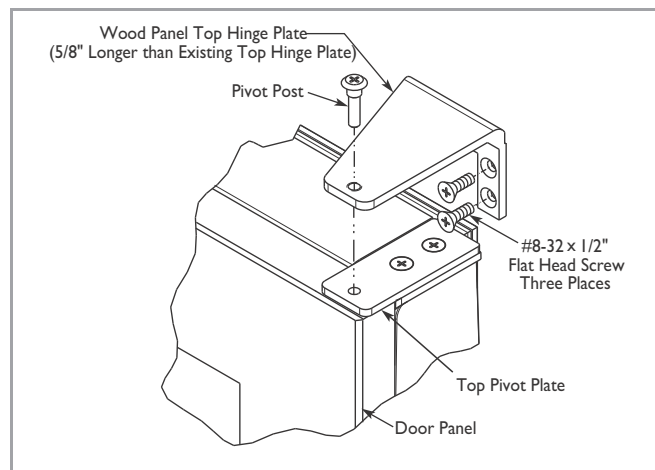
Assembling the Door

1. Install the assembled panel by sliding the original door panel back into the door frame.
2. replace the overlay Handle and secure with the two screws removed in Step 4 under *Removing Existing Door*.

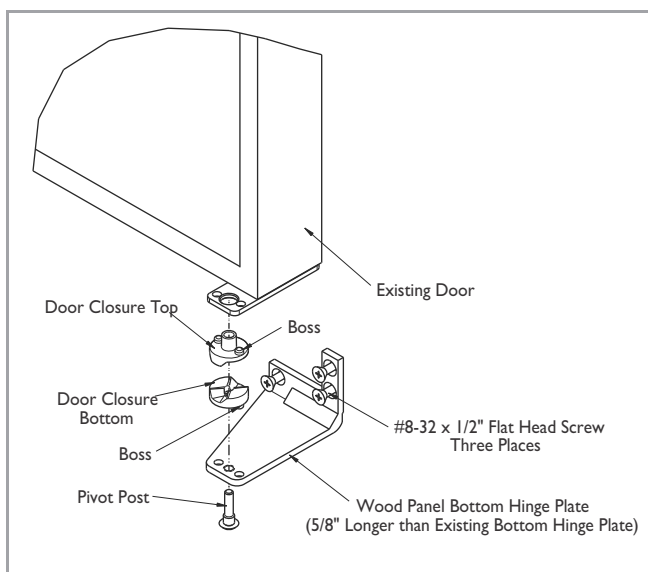


4. Attach Top Pivot Plate to door handle, on the side where hinges will be. Use the two #8-32 x 1/2" Flat Head Phillips screws (Black) supplied with kit, see below
5. Starting at the corners and working toward the center, push the door gasket into place.

Installing the Door



1. Remove the existing hinge from the unit, saving the door closure assembly
2. Install the new Replacement top hinge onto the unit, See blow
3. 'Install the pivot post into the new Replacement Bottom Hinge (using phillips screwdriver) and install the hinge onto the unit.
4. Replace the door closure assembly onto the bottom pivot post. Be sure the bosses on closures align with holes in hinge and hinge plate.



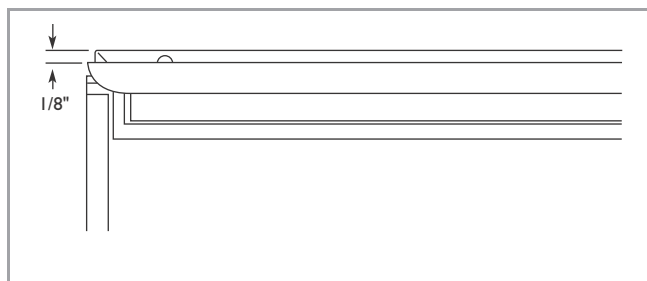
IMPORTANT

Pivot posts must be cleaned. Closers must also be clean and greased to ensure proper operation.

- Place the modified door onto the pivot post.
- Position door and install the pivot post into the top hinge
- Adjust door as needed for proper closure
- Check to see that light goes off when the door closes.
- Reinstall the door shelves by lining up the bosses and first pushing straight in, then down at a 45° angle.

Checking Door Alignment

The unit's door is aligned as the factory before shipment. However, its alignment could have been disturbed during shipment or during door panel installation.



IMPORTANT

Properly aligned, the door should be 1/8" below the top of the unit cabinet. NOT flush with the top. See Below.

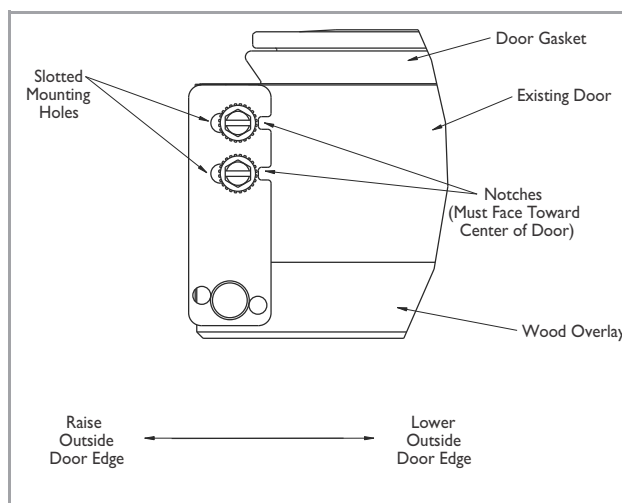
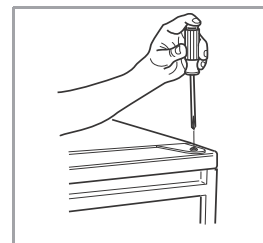
- Compare the top edge of the door to the top edge of the cabinet.

- if the door edge is 1/8" below and parallel to the top of the cabinet the door is aligned. If it is not, note whether the side opposite the hinge needs to be moved UP or DOWN, and use the following procedure.

Note: If the door is adjusted correctly, but panel is not square with the adjacent cabinets, slight adjustment can be made by drilling the holes in the vinyl coated steel panel slightly oversized.

Adjusting Door Alignment

- Remove top hinge screw pin. Remove door by tilting



forward and lifting off the bottom hinge pin.

- With door upside-down loosen but do not remove the two screws on the door's bottom hinge plate.
- See above, if the top far edge of the door needs to move UP, move the hinge plate toward the outside of the door and retighten screws. If the top far edge of the door needs to move DOWN, move the hinge plate toward the inside of the door and retighten screws.
- Mount the door, recheck alignment and repeat Steps 2 and 3 if further adjustment is necessary.
- When top edge of door parallel to top edge of cabinet, remove the door and ensure the two screws are secure.
- Remove the door closers from the bottom hinge, clean thoroughly and lubricate the mating surface with petroleum jelly.
- Reinstall the closers, lining up

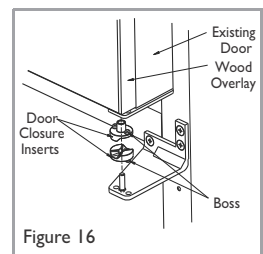


Figure 16

SERVICE INFORMATION

If you have a problem with this appliance, your use and care guide has troubleshooting information to help you quickly identify common problems and provide information on possible cause and remedy. Answers to Customers Frequently Asked Questions are available at www.u-line.com/customer/faq.cfm. You may contact U-Line directly:

GENERAL INQUIRIES:

U-Line Corporation
P.O. Box 245040
Milwaukee, Wisconsin 53224-9540 U.S.A.
Phone (414) 354-0300
FAX (414) 354-7905
Email: sales@u-line.com
www.u-line.com

SERVICE ASSISTANCE:

Phone (800) 779-2547
FAX (414) 354-5696
Email: onlineservice@u-line.com
www.u-lineservice.com

PARTS ASSISTANCE:

E-mail: onlineparts@u-line.com

ABOUT U-LINE

Building on 45 years, U-Line has captivated those with an appreciation for the finer things with exceptional design, inspired innovations and attention to even the smallest details.

U-Line is synonymous with premium built-in under counter ice making, refrigeration and wine storage appliances, the U-Line Corporation is committed to luxury under the counter. U-Line is known and respected for unwavering dedication to product innovation, quality and selection. A bold and broad line of models is the product of visionaries in the pursuit of distinctive living environments in the kitchen and spaces beyond.

In 1962, Henry Uihlein founded U-Line Corporation as an outgrowth of Ben-Hur Freezer Company and was the first to develop and patent an automatic stand-alone under counter residential ice maker. His foresight and determination to develop new ideas and to succeed when there were no clear guidelines or solutions are evident today. The Milwaukee, Wisconsin based family operated business provides continuity and vision from which innovations continue to be born.

Going forward, U-Line will continue offering best-in-class products that build on the company's numerous patents and world firsts to guide the under counter industry in realizing its unlimited potential.