



2013 LAUNDRY INNOVATION GUIDE

Your complete guide to products, features and benefits.



IT DOESN'T GET ANY BIGGER... OR BETTER!

Imagine being able to wash a king size comforter and a full set of bedding in a single load. And just think how much more amazing this would be if you could tackle a regular load of laundry 20 minutes faster!¹ LG takes the industry's largest capacity washer² and powers it to the max with time saving TurboWash™ technology and a steam cleaning feature that virtually eliminates wrinkles and odors.

LG's top load Wave™ Series is loaded with some hard-hitting innovations like WaveForce™ technology, which combines

rapid drum movement with powerful water jets for great cleaning. It's also gentle on your utility bill with smart options like ColdWash™, which gives you warm water performance with cold water savings. Our innovative new top load pair with front controls provides easy access to the controls, even when the lid is open.

With innovations like these, it's no wonder LG washers and dryers are the industry leaders.

*LG is the market share leader in front load laundry in the U.S. for five years (20 quarters) running (2011 Q4 Stevenson TraQline data). ¹ Based on AHAM-HLW-1-2010 test protocol. Cotton/Normal or comparable cycle at default settings, 8-lb loads, front load washers only. Excludes other LG manufactured products. Excludes quick wash or comparable cycles intended for small, lightly soiled loads only. ² Based on ENERGY STAR qualified residential washers, as published by the D.O.E. 4/13/12



WASHERS

TurboWash™ Technology 4
 Mega Capacity 5
 Core Technologies..... 6
 Steam Technology..... 8
 TubFresh™ System10
 Energy Efficient.....11
 Top Load Innovations.....12
 Smart Diagnosis™15
 Product Lineup.....16
 Specifications.....22
 Installation / Dimensions29

DRYERS

Superior Drying.....14
 Product Lineup.....16
 Specifications.....22
 Installation/Dimensions29

SPECIALTY

Small Space Solutions..... 20
 Product Lineup.....21
 Specifications.....28
 Installation/Dimensions.....29

LG LAUNDRY

Versatility31
 Laundry Q&A.....32
 Choices and Options.....34
 Warranty.....35

TURBOWASH™ TECHNOLOGY



SAVE 20
MINUTES AND
GET OUTSTANDING
CLEANING – EVEN
ON LARGER
LOADS*

40
min.

60
min.



FAST FORWARD YOUR LAUNDRY

Tired of spending hours on end finishing your family's laundry? Now, those days are gone. LG's revolutionary TurboWash™ Technology allows you to save 20 minutes on larger loads, with outstanding cleaning performance!* It's like pressing the fast forward button on your laundry.

ATOMIZING RINSE SPRAY

A high pressure nozzle above the door sprays tiny water particles through the clothes during high spin speeds to combine the spin and rinse cycles into one.

TWIN SPRAYS

Twin sprays in the front of the washer spray a concentrated detergent solution directly onto the clothes, resulting in faster soaking time.

*Based on AHAM-HLW-1-2010 test protocol. Cotton/Normal or comparable cycle at default settings, 8 lb loads, front load washers only. Excludes other LG manufactured products. Excludes quick wash or comparable cycles intended for small, lightly soiled loads only.

FUN FACTS

- Save up to 150 minutes per week or almost 5 1/2 days per year – it's like getting back a whole week of vacation!
- TurboWash™ washers qualify for ENERGY STAR® MOST EFFICIENT 2012 while still delivering outstanding cleaning performance – it's the best of both worlds!

DEMO MODE

1. Add 1 gallon of water to the washer.
2. Simultaneously press and hold the following buttons: WM8000 / WM3470 - TURBOWASH and SIGNAL WM3070 - DELAY WASH and WASH TEMP
3. While holding the above buttons, press POWER to activate Demo Mode.
4. To demonstrate Twin Spray, press START/PAUSE.

INDUSTRY'S LARGEST CAPACITY

MORE ROOM TO CLEAN

When it comes to laundry capacity, big is good, bigger is better, but biggest is best. With the largest capacity washer available**, now you can wash a king size comforter and full set of bedding in a single load! With a 5.1 cu. ft. mega capacity washer and 9.0 cu. ft. mega capacity dryer, you'll definitely have more room to clean.



— A LOT —
BIGGER INSIDE
— A LITTLE —
BIGGER OUTSIDE
BE SURE TO MEASURE



MEGA CAPACITY 5.1 CU. FT.



WASH UP TO
100
HAND
TOWELS

MEGA CAPACITY
5.1 cu. ft.



WASH UP TO
73
HAND
TOWELS

STANDARD CAPACITY
3.7 cu. ft.

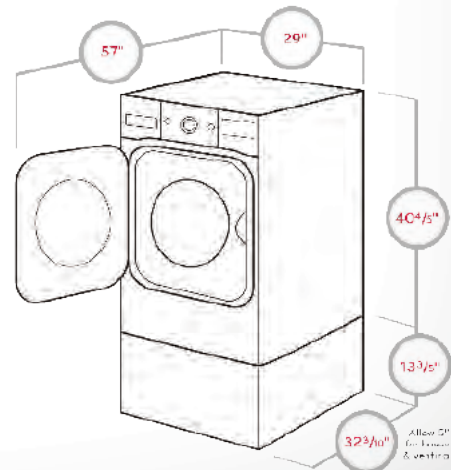
5.1
CU. FT.
WASHER

9.0
CU. FT.
DRYER

MEASURE FIRST

LG's mega capacity washer and dryer pair requires a **MINIMUM AREA** of 60" W x 40 4/5" H x 37 3/10" D to allow for proper spacing and venting. (If you add pedestals, the minimum height is 54 11/16") You also need to measure the path of delivery and door openings to ensure the oversized pair can be successfully delivered and installed.

	WIDTH	HEIGHT	DEPTH	DEPTH (DOOR OPEN)	HEIGHT (WITH PEDESTAL)
WASHER	29"	40 4/5"	32 3/10"	57"	54 11/16"
DRYER	29"	40 4/5"	32 3/10"	57"	54 11/16"



**Based on ENERGY STAR® qualified residential washers as published by the DOE, 1/3/12.

CORE TECHNOLOGIES

INVERTER DIRECT DRIVE MOTOR

We're so confident in our innovative Inverter Direct Drive Motor that we back it up with a 10-year warranty. With our system, power is transferred directly from the motor to the drum, rather than through belts and pulleys, helping to reduce noise, vibration and wear and tear.

Conventional Motor



Traditional Motor + Belt + Pulley + Drum

VS

LG Inverter Direct Drive Motor



DD Motor + Drum



COLDWASH™

COLDWASH™ TECHNOLOGY

The hottest thing in cold clean! Using the cold cycle on your washer doesn't have to mean compromising. ColdWash™ Technology uses cold water and enhanced washing motions to penetrate deep into fabrics, giving you cold water savings with warm water performance.



TrueBalance™
ANTI-VIBRATION SYSTEM

TRUEBALANCE™ ANTI-VIBRATION SYSTEM

You shouldn't know your washer is on from the next room. The LG TrueBalance™ Anti-Vibration System is designed to reduce washer noise and vibration for smooth, quiet performance in any room of the house—even if it's on another floor.



6MOTION™ TECHNOLOGY

Get your clothes clean and experience a smarter way to wash with our innovative 6Motion™ Technology. Each wash cycle combines up to 6 different wash motions to provide a revolutionary cleaning experience.



Powerful washing performance & less damage to clothes – Clothes are lifted to the top of the drum and then actively fall to the bottom.



Deep cleaning – Clothes aggressively move along the drum in a side-to-side motion causing friction and keeping clothes submerged in water longer.



Quick wetting of clothes – A high spin speed is used to push clothes to the outside of the drum while detergent is sprayed through clothes.



Great washing performance – Gently rolls clothes along bottom of the drum, keeping clothes submerged in water longer.



Good distribution – Conventional wash motion that moves clothes in a circular motion for even distribution.



Delicate Washing – Gently tosses clothes side-to-side for delicate hand wash effect.

 **COLDWASH™**

MEANS COLD-WATER
SAVINGS WITH WARM-WATER
PERFORMANCE USING

 **MOTION DD** Direct Drive



**LG is one of the most reliable brands in front load laundry in the U.S., according to a leading consumer magazine as of 2/17/12.

STEAM TECHNOLOGY

ALLERGIENE™ CYCLE



Household allergens giving you the sniffles? The Allergiene™ Cycle uses the power of steam to gently remove over 95% of common household allergens, like dust mites and pet dander from even the most delicate fabrics.*



STEAM OPTION

The Steam option can be added to select cycles to help remove stubborn stains, creating whiter whites and brighter colors so customers can look their very best.

SPOTCLEAN™ CYCLE

Got a small stain or spot? Our SpotClean™ Cycle is designed to use the power of steam to effectively remove stains and freshen clothes right in the dryer.





STEAMFRESH™ CYCLE

Late for the party and no time to iron your favorite outfit? The SteamFresh™ Cycle refreshes, and reduces wrinkles in up to five garments at a time with one 20-minute dryer cycle.

TRUESTEAM™ BENEFITS

- LG's unique steam cartridge design eliminates the need for a water supply hook-up to the dryer. It also allows customers with concerns about their water quality (e.g. well water or hard water) to fill the cartridge with bottled water or filtered tap water instead.
- LG's TrueSteam™ Generator creates significantly more steam and injects it into the drum much more evenly and for longer durations of time.
- The steam nozzle is designed not to catch on clothing, even when tumbling.

EASYIRON™ OPTION

Who likes ironing? No one. The EasyIron™ Option lightly moistens clothes to make ironing easier and more efficient.

REDUCESTATIC™ OPTION

Say so long to static. The ReduceStatic™ Option uses steam to virtually eliminates static cling.



STEAMSANITARY™ CYCLE

You probably wish you could clean your throw pillows or children's toys. With the SteamSanitary™ Cycle, you can. It uses steam to safely sanitize items marked as non-washable.

*ASTHMA AND ALLERGY FRIENDLY and the ASTHMA AND ALLERGY FRIENDLY LOGO are Certification Marks and Trademarks of ALLERGY STANDARDS LIMITED. The ASTHMA AND ALLERGY FOUNDATION OF AMERICA is a Registered Trademark of AAFA.

TUBFRESH™ SYSTEM

FRESHCARE™ OPTION

There's a little voice in your head telling you that you forgot to put the clothes in the dryer. No worries. Our unique FreshCare™ Option will periodically tumble the wash load for up to 8 hours. Air is circulated through the wash load to help keep clothes smelling fresh until customers remember to put them in the dryer.

TUB CLEAN CYCLE

This high-powered cycle removes detergent residue to keep odors and mildew away. We recommend running the Tub Clean Cycle every month to help keep the washer clean and fresh.

BETTER DOOR GASKET DESIGN

LG's door gasket is designed with drain holes to help the gasket dry more quickly to help keep mold and mildew away.

LG
INNOVATIONS
HELP MAINTAIN
YOUR WASHER'S
FRESHNESS



MAGNET VENTILATION

How do you ensure the wash tub stays fresh in-between loads? LG has the answer with a clever magnet that props the door open ever so slightly to allow fresh air to circulate in the wash tub without getting in your way.

AWARDED ENERGY STAR® MOST EFFICIENT FOR 2012

ALL OF LG'S 2012 FRONT LOAD WASHERS
HAVE BEEN AWARDED ENERGY STAR® MOST
EFFICIENT OF 2012



Each of these designated models can save you the equivalent of at least 68,000 bottles (20 oz.) of water a year.*

FUN FACTS

- All of LG's 2012 front load washers will save at least 11,983 gallons of water per year compared to owning a pre-2004 non-ENERGY STAR® qualified clothes washer. These water savings are equivalent to:
 - Running 2,650 cycles on one of LG's front load washers
 - Consuming more than 76,000 bottles of water
 - Filling more than 2,300 office water coolers



*Source: U.S. Environmental Protection Agency's ENERGY STAR® program (compared to a pre-2004 non-ENERGY STAR® qualified clothes washer)

TOP LOAD WASHER INNOVATIONS



WAVEFORCE™ TECHNOLOGY

Customers want powerful wash performance. But they also want a washer that takes it easy on their clothes. Now customers can have it all. LG's WaveForce™ Technology creates a waterfall like force that penetrates into fabrics for outstanding wash performance while being gentle on fabrics.

WHERE'S THE AGITATOR?

Traditional agitators in top load washers are known for being rough on clothing. That's why LG's high efficiency top load washers use an innovative wash system that uses motion and WaveForce™ Technology to get clothes clean. These cleaning motions are made possible by LG's Direct Drive motor, which operates without belts or pulleys, delivering power directly from the motor to the drum. This system results in increased efficiency, reduced noise and vibration, and a longer lifetime, supported by a 10-year limited warranty.

4.7
CU. FT.

FEWER LOADS

With LG's ultra-large capacity washers, you can fit more into every load – saving time and energy. In fact, our top load machines are among the largest capacity available anywhere.

LG TOP LOAD WASHERS ALSO FEATURE THESE INNOVATIONS

COLDWASH™

TrueBalance™
ANTI-VIBRATION SYSTEM



Inverter DirectDrive





ON ENERGY & WATER

Thanks to innovations like DirectDrive™ and WaveForce™, LG top load washers offer superior high efficiency performance with great money savings.



SMARTRINSE™ JET SPRAY SYSTEM

Saving water doesn't mean compromising rinsing power. At least not with our new SmartRinse™ Jet Spray system. It provides better rinsing performance while making more efficient use of water at the same time.

SLAMPROOF™ LID

Our innovative washer lid is quietly making a statement. It closes gently for a safe, convenient, and quiet experience – every time.

REVOLUTIONARY FRONT CONTROLS

LG's latest addition to the top load laundry collection features easy-access, ergonomic front controls. This forward thinking design provides easy access to the controls, even when the lid is open. The laundry pair also provides a sleek and modern design that has never before been seen in a top load washer and dryer pair.



SUPERIOR DRYING



SENSOR DRY

What's worse than pulling clothes out of the dryer and finding they're still damp? Our Sensor Dry system measures the moisture levels during the cycle and automatically adjusts the drying time, to help ensure you get dry laundry every time.

NEVERUST™ STAINLESS STEEL DRUM

Just because you want your dryer to last for years doesn't mean you want it to look its age. The NeveRust™ Stainless Steel Drum is built to keep drying your clothes more efficiently without showing wear and tear.



SPEED DRY CYCLE

It's not like you always have time on your hands to wait around for the dryer. The Speed Dry cycle can have clothes dry and ready-to-wear in about 15 minutes.

FLOWSENSE™ DUCT CLOGGING INDICATOR

The FlowSense™ Duct Clogging Indicator will tell you when it's time to clean the ducts out. Clean ducts mean great drying every time.

ANTI-BACTERIAL CYCLE

NSF®-certified cycle reduces 99.9% of bacteria on clothes.



*LG is one of the most reliable dryer brands in the U.S., according to a leading consumer magazine as of 2/17/12.

A SMARTER WAY TO DO LAUNDRY



SMARTER WASHING AND DRYING

With its Smart ThinQ™ technology, you might just wonder if your washer and dryer pair is almost as smart as you. Stay connected with features like Smart Access and Smart Adapt, which allow you to monitor your laundry remotely and download new and improved cycles. The Smart Grid Ready feature automatically runs the washer and dryer when electricity rates are lowest. In the unlikely event that you have any problems, Smart Diagnosis™ helps you troubleshoot problems quickly and efficiently. (Available on model WT6001HV)



Smart Access

KNOW WHEN WASH IS IN ACTION

Monitor your laundry remotely with an ingenious smartphone app created just for Smart ThinQ™ appliances. You can stop or check the status of your running appliance anytime...anywhere.



Smart Adapt

PERSONALIZED PERFORMANCE

There's no such thing as a typical load of laundry. That's why LG makes it so easy to download new and improved cycles to meet all of your special laundry needs. Upgrading your washer and dryer with the latest LG innovations is a simple process as well. Experience the future of clean laundry without having to purchase a brand new model.



Smart Diagnosis

PEACE OF MIND

Experiencing a problem with your appliance? LG's reassuring Smart Diagnosis™ feature identifies the issue and lets you know what's happening in minutes. Your appliance will either emit sound data to communicate with the LG Call Center over the phone, or transmit data over wi-fi to your smartphone app for quick and easy diagnosis and solutions. Best of all, many problems are easily remedied without the need for a service visit. (Available on all full-size front load washer and dryer pairs and all top load washer and dryer pairs.)



Smart Grid

GET MORE EFFICIENT

Energy conservation is important to all of us. Smart Grid Ready technology in every LG Smart ThinQ™ appliance detects when power consumption in your neighborhood is at its lowest, so your appliance can operate at lower energy rates. So start saving energy as soon as your utilities switch to Smart Grid.

YOUR LAUNDRY CONSULTANT

Consult your Smart ThinQ™ washer for the best guides in laundry care. From instruction on how to remove a number of common stains to fabric care guides, your washer tells you what to do to get the most out of your laundry.

FRONT LOAD LAUNDRY

3.6
CU. FT.
WASHER

7.1
CU. FT.
DRYER



WM2250CW FRONT LOAD WASHER

- 7 Cycles
- Direct Drive Motor (10-Year Warranty)
- 1200 RPM
- 6Motion™ Technology
- ColdWash™
- FreshCare™
- TrueBalance™ Anti-Vibration System
- Dual LED Display
- SmartDiagnosis™

○ WM2250CW – White

DLE2250W / DLG2251W FRONT LOAD DRYER

- 7 Cycles
- Sensor Dry
- Speed Dry Cycle
- Dual LED Display
- FlowSense™
- SmartDiagnosis™

Electric:

○ DLE2250W – White

Gas:

○ DLG2251W – White

3.6
CU. FT.
WASHER

7.3
CU. FT.
DRYER



WM2650H_A STEAMWASHER™

- Steam
- Internal Heater
- 9 Cycles
- Direct Drive Motor (10-Year Warranty)
- 1200 RPM
- 6Motion™ Technology
- ColdWash™
- FreshCare™
- TrueBalance™ Anti-Vibration System
- Dual LED Display
- SmartDiagnosis™

○ WM2650HWA – White

● WM2650HRA – Wild Cherry Red

DLEX2650_ / DLGX2651_ STEAMDRYER™

- TrueSteam™
- 9 Cycles
- SteamSanitary™
- SteamFresh™
- Sensor Dry
- Speed Dry Cycle
- Dual LED Display
- FlowSense™
- SmartDiagnosis™

Electric:

○ DLEX2650W – White

● DLEX2650R – Wild Cherry Red

Gas:

○ DLGX2651W – White

● DLGX2651R – Wild Cherry Red

3.7
CU. FT.
WASHER

7.3
CU. FT.
DRYER



WM3070H_A TURBOWASH™ WASHER WITH STEAM

- TurboWash™ Technology
- Steam
- Internal Heater
- 12 Cycles
- Direct Drive Motor (10-Year Warranty)
- 1200 RPM
- 6Motion™ Technology
- ColdWash™
- FreshCare™
- TrueBalance™ Anti-Vibration System
- Dual LED Display
- SmartDiagnosis™

○ WM3070HWA – White

● WM3070HRA – Wild Cherry Red

DLEX3070_ / DLGX3071_ STEAMDRYER™

- TrueSteam™
- NeveRust™ Stainless Steel Drum
- 12 Cycles
- SteamSanitary™
- SteamFresh™
- Sensor Dry
- Speed Dry Cycle
- Dual LED Display
- FlowSense™
- SmartDiagnosis™

Electric:

○ DLEX3070W – White

● DLEX3070R – Wild Cherry Red

Gas:

○ DLGX3071W – White

● DLGX3071R – Wild Cherry Red

4.0

CU. FT.
WASHER

7.3

CU. FT.
DRYER



WM3470H_A

TURBOWASH™ WASHER WITH STEAM

- TurboWash™ Technology
- Steam
- 12 Cycles
- Internal Heater
- Direct Drive Motor (10-Year Warranty)
- 1200 RPM
- 6Motion™ Technology
- ColdWash™
- FreshCare™
- TrueBalance™ Anti-Vibration System
- Dual LED Display
- SmartDiagnosis™

- WM3470HWA - White
- WM3470HVA - Graphite Steel

DLEX3470_ / DLGX3471_

STEAMDRYER™

- TrueSteam™
- NeveRust™ Stainless Steel Drum
- 12 Cycles
- SteamSanitary™
- SteamFresh™
- Sensor Dry
- Speed Dry Cycle
- Dual LED Display
- FlowSense™
- SmartDiagnosis™

Electric:

- DLEX3470W - White
- DLEX3470V - Graphite Steel

Gas:

- DLGX3471W - White
- DLGX3471V - Graphite Steel

4.3

CU. FT.
WASHER

7.4

CU. FT.
DRYER



WM4070H_A

TURBOWASH™ WASHER WITH STEAM

- TurboWash™ Technology
- Steam
- 14 Cycles
- Internal Heater
- Direct Drive Motor (10-Year Warranty)
- 1300 RPM
- 6Motion™ Technology
- ColdWash™
- FreshCare™
- TrueBalance™ Anti-Vibration System
- Dual LED Display
- SmartDiagnosis™

- WM4070HWA - White
- WM4070HVA - Graphite Steel

DLEX4070_ / DLGX4071_

STEAMDRYER™

- TrueSteam™
- NeveRust™ Stainless Steel Drum
- 14 Cycles
- SteamSanitary™
- SteamFresh™
- Sensor Dry
- Speed Dry Cycle
- Dual LED Display
- FlowSense™
- SmartDiagnosis™

Electric:

- DLEX4070W - White
- DLEX4070V - Graphite Steel

Gas:

- DLGX4071W - White
- DLGX4071V - Graphite Steel

5.1

CU. FT.
WASHER

9.0

CU. FT.
DRYER



WM8000H_A

MEGA CAPACITY TURBOWASH™ WASHER WITH STEAM

- TurboWash™ Technology
- Steam
- 14 Cycles
- Internal Heater
- Direct Drive Motor (10-Year Warranty)
- 1300 RPM
- 6Motion™ Technology
- ColdWash™
- FreshCare™
- TrueBalance™ Anti-Vibration System
- Dual LED Display
- SmartDiagnosis™

- WM8000HWA - White
- WM8000HVA - Graphite Steel

DLEX8000_ / DLGX8001_

MEGA CAPACITY STEAMDRYER™

- TrueSteam™
- NeveRust™ Stainless Steel Drum
- 14 Cycles
- SpotClean™
- SteamSanitary™
- SteamFresh™
- Sensor Dry
- Speed Dry Cycle
- NeveRust™ Drum
- Dual LED Display
- FlowSense™
- SmartDiagnosis™

Electric:

- DLEX8000W - White
- DLEX8000V - Graphite Steel

Gas:

- DLGX8001W - White
- DLGX8001V - Graphite Steel

TOP LOAD LAUNDRY

4.3

CU. FT.
WASHER

7.3

CU. FT.
DRYER



COLDWASH™

WT1101CW

HIGH EFFICIENCY TOP LOAD WASHER

- Front Control Design
- 8 Cycles
- Direct Drive Motor (10-Year Warranty)
- SmartRinse™ Jet Spray System
- ColdWash™
- SlamProof™ Glass Lid
- TrueBalance™ Anti-Vibration System
- Dual LED Display
- SmartDiagnosis™

○ WT1101CW - White

DLE1101W / DLG1102W

DRYER

- Front Control Design
- 9 Cycles
- Sensor Dry
- Speed Dry Cycle
- Dual LED Display
- FlowSense™
- SmartDiagnosis™

Electric:

○ DLE1101W - White

Gas:

○ DLG1102W - White

4.5

CU. FT.
WASHER

7.3

CU. FT.
DRYER



COLDWASH™ **WaveForce™**

WT1201C_

HIGH EFFICIENCY TOP LOAD WASHER

- Front Control Design
- 8 Cycles
- Direct Drive Motor (10-Year Warranty)
- WaveForce™
- SmartRinse™ Jet Spray System
- ColdWash™
- SlamProof™ Glass Lid
- TrueBalance™ Anti-Vibration System
- Dual LED Display
- SmartDiagnosis™

○ WT1201CW - White

● WT1201CV - Graphite Steel

DLEY1201_ / DLGY1202_

DRYER

- Steam Technology
- Front Control Design
- 12 Cycles
- Sensor Dry
- Speed Dry Cycle
- Dual LED Display
- FlowSense™
- SmartDiagnosis™

Electric:

○ DLEY1201W - White

● DLEY1201V - Graphite Steel

Gas:

○ DLGY1202W - White

● DLGY1202V - Graphite Steel

4.5

CU. FT.
WASHER

7.3

CU. FT.
DRYER



COLDWASH™

WT4870CW

HIGH EFFICIENCY TOP LOAD WASHER

- 8 Cycles
- Direct Drive Motor (10-Year Warranty)
- SmartRinse™ Jet Spray System
- ColdWash™
- SlamProof™ Lid
- TrueBalance™ Anti-Vibration System
- Dual LED Display
- SmartDiagnosis™

○ WT4870CW - White

DLE4870W / DLG4871W

DRYER

- 8 Cycles
- Sensor Dry
- Speed Dry Cycle
- Dual LED Display
- FlowSense™
- SmartDiagnosis™

Electric:

○ DLE4870W - White

Gas:

○ DLG4871W - White

4.7

CU. FT.
WASHER

7.3

CU. FT.
DRYER



WT5070CW

**HIGH EFFICIENCY
TOP LOAD WASHER**

- 12 Cycles
- Direct Drive Motor (10-Year Warranty)
- WaveForce™
- SmartRinse™ Jet Spray System
- ColdWash™
- SlamProof™ Glass Lid
- TrueBalance™ Anti-Vibration System
- Dual LED Display
- SmartDiagnosis™

○ WT5070CW - White

DLEX5170_ / DLGX5171_

STEAMDRYER™

- TrueSteam™
- 14 Cycles
- SteamSanitary™
- SteamFresh™
- Sensor Dry
- Speed Dry Cycle
- Dual LED Display
- FlowSense™
- SmartDiagnosis™

Electric:

○ DLEX5170W - White

Gas:

○ DLGX5171W - White



COLDWASH™ WaveForce™

4.7

CU. FT.
WASHER

7.3

CU. FT.
DRYER



WT5170H_

**HIGH EFFICIENCY
TOP LOAD WASHER**

- 14 Cycles
- Internal Heater
- Direct Drive Motor (10-Year Warranty)
- WaveForce™
- SmartRinse™ Jet Spray System
- ColdWash™
- NSF®-Certified Sanitary Cycle
- SlamProof™ Glass Lid
- TrueBalance™ Anti-Vibration System
- Dual LED Display
- SmartDiagnosis™

○ WT5170HW - White

● WT5170HV - Graphite Steel

DLEX5170_ / DLGX5171_

STEAMDRYER™

- TrueSteam™
- 14 Cycles
- SteamSanitary™
- SteamFresh™
- Sensor Dry
- Speed Dry Cycle
- Dual LED Display
- FlowSense™
- SmartDiagnosis™

Electric:

○ DLEX5170W - White

● DLEX5170V - Graphite Steel

Gas:

○ DLGX5171W - White

● DLGX5171V - Graphite Steel



COLDWASH™ WaveForce™

4.7

CU. FT.
WASHER

7.3

CU. FT.
DRYER



WT6001HV

**HIGH EFFICIENCY
TOP LOAD WASHER**

- 15 Cycles
- Internal Heater
- Direct Drive Motor (10-Year Warranty)
- WaveForce™
- SmartRinse™ Jet Spray System
- ColdWash™
- NSF®-Certified Sanitary Cycle
- SlamProof™ Glass Lid
- TrueBalance™ Anti-Vibration System
- 7" TFT Touch Screen Display
- SmartDiagnosis™

● WT6001HV - Graphite Steel

DLEX6001V / DLGX6002V

STEAMDRYER™

- TrueSteam™
- 15 Cycles
- SteamSanitary™
- SteamFresh™
- Sensor Dry
- Speed Dry Cycle
- 7" TFT Touch Screen Display
- FlowSense™
- SmartDiagnosis™

Electric:

● DLEX6001V - Graphite Steel

Gas:

● DLGX6002V - Graphite Steel



COLDWASH™ WaveForce™ SmartThinQ

SPECIALTY LAUNDRY



Small spaces still deserve the very best in fabric care, high-efficiency and style. With the LG 24" laundry pair and all-in-one combos, customers can have it all in a compact design that does not require an external venting source. These specialty options are the perfect solution for homes, condos, apartments, businesses and vacation homes where space is at a premium.



Compact washer and dryer is only 48-inches wide when placed side-by-side, 24-inches wide when stacked with the stacking kit (included in dryer).



27"

Full size washer/dryer combo offers twice the performance in half the space and can be installed with a convenient drawer pedestal.

THIS
WASHER/
DRYER COMBO
IS ONLY 24"
WIDE.



24"

Compact washer/dryer combo does it all in one machine.

I'VE NEVER USED A WASHER/ DRYER COMBO SO I DON'T KNOW WHAT TO EXPECT.

You can expect the best from LG.

Always remember the loads are smaller and that combined, the wash-and-dry-cycles take approximately 2 1/2 to 4 hours to complete. It is completely normal for condensing dryers to run for a longer time than a standard vented model (and, even though they run longer, they use 2/3 less energy than a standard vented dryer!)

I WANT TO DO LAUNDRY AT HOME BUT I DON'T HAVE EXTERNAL VENTING FOR A DRYER.

Worry no more. Our compact dryer and combos feature a **ventless condensing system** that dries clothes without the need for external venting. All you need is a water hook-up and a standard outlet (240V outlet for compact dryer) to install these units.

I DON'T HAVE A LOT OF SPACE BUT I DO A LOT OF LAUNDRY.

You can have it all. The LG full size washer/dryer combo features a **3.6 cu. ft. capacity** tub so even if you do have a smaller space, you don't need to compromise on washing capacity.

WASH PERFORMANCE IS REALLY IMPORTANT TO ME.

It's important to us, too. The tumbling action of a front-loading washer gently lifts the clothes in and out of the water hundreds of times during the wash cycle. This action **cleans and rinses your clothes better than top-loading washers** and is gentler on the fabric. Also, the LG Washer/Dryer Combo goes through two rinses during the regular cycle, eliminating any detergent residue that is ordinarily left in the clothing.

2.3
CU. FT.
WASHER

4.2
CU. FT.
DRYER



WM1355H_
24" COMPACT FRONT LOAD WASHER

- 2.3 cu. ft. Large Capacity
- SenseClean™
- Sanitary Cycle
- 9 Wash Cycles
- 5 Temperature Levels
- Direct Drive Motor (10-Year Warranty)

○ WM1355HW - White

DLEC855_
24" COMPACT FRONT LOAD DRYER

- 4.2 cu. ft. Capacity
- Sensor Dry
- 9 Drying Cycles
- Wrinkle Care Option
- NeveRust™ Stainless Steel Drum
- Ventless Condensing Dryer
- Stacking Kit Included

Electric:

○ DLEC855W - White



2.3
CU. FT.
COMBO



WM3455H_
**24" COMPACT WASHER/
DRYER COMBO**

- 2.3 cu. ft. Capacity
- SenseClean™
- Sanitary Cycle
- 9 Wash Cycles
- 6 Dry Cycles
- Direct Drive Motor (10-Year Warranty)
- Ventless Condensing Dryer

○ WM3455HW - White

● WM3455HS - Silver

3.6
CU. FT.
FULL SIZE
COMBO



WM3987HW
**FULL SIZE WASHER/
DRYER COMBO**

- 3.6 cu. ft. Capacity
- SenseClean™
- Sanitary Cycle
- 9 Wash Cycles
- 6 Dry Cycles
- TrueBalance™ Anti-Vibration System
- Direct Drive Motor (10-Year Warranty)
- Ventless Condensing Dryer

○ WM3987HW - White

**ADVANTAGES OF LG VENTLESS
CONDENSING DRYERS**

- No vent duct required, permitting easy installation anywhere there is a water hook-up
- The drying system is closed so no room air is exhausted to the outside which means no wasted energy
- LG condensing dryers are so effective and well-sealed that very little moisture escapes from the system



FRONT LOAD WASHER SPECIFICATIONS

	WM2250CW	WM2650H_A	WM3070H_A
Capacity	3.6 cu. ft.	3.6 cu. ft.	3.7 cu. ft.
ENERGY			
2012 ENERGY STAR MOST EFFICIENT	•	•	•
WASH PROGRAMS			
Wash Programs	7 Cotton / Normal, Bulky / Large, Perm. Press, Delicates, Hand Wash / Wool, Speed Wash, Tub Clean	9 Cotton / Normal, Bulky / Large, Perm. Press, Delicates, Hand Wash / Wool, Speed Wash, Sanitary, Allergiene™, Tub Clean	12 Cotton / Normal, Bulky / Large, Perm. Press, Delicates, Hand Wash / Wool, Speed Wash, Sanitary, Heavy Duty, BrightWhites™, Towels, Allergiene™, Tub Clean
No. of Options	9	9	11
Options	Prewash, Rinse + Spin, Delay Wash, Water Plus, Extra Rinse, Child Lock, Signal On / Off, ColdWash™, FreshCare™	Prewash, Rinse + Spin, Delay Wash, Water Plus, Extra Rinse, Child Lock, ColdWash™, Signal On / Off, Steam	Prewash, Rinse + Spin, Delay Wash, Custom Program, Extra Rinse, Child Lock, ColdWash™, Signal On / Off, Steam, FreshCare™, TurboWash™
No. of Wash / Rinse Temps	Hot, Warm, Eco Warm, Cold, Tap Cold (All Cold Rinses)	Extra Hot, Hot, Warm, Cold, Tap Cold (All Cold Rinses)	Extra Hot, Hot, Warm, Cold, Tap Cold (All Cold Rinses)
Spin Speeds	Extra High (1,200 max.), High, Medium, Low, No Spin	Extra High (1,200 max.), High, Medium, Low, No Spin	Extra High (1,200 max.), High, Medium, Low, No Spin
No. of Water Levels	Automatically adjusts to the size of load	Automatically adjusts to the size of load	Automatically adjusts to the size of load
No. of Soil Levels	5	5	5
FABRIC CARE FEATURES			
ColdWash™ Option	•	•	•
Steam		•	•
Allergiene™ Cycle		•	•
TurboWash™			•
CONVENIENCE FEATURES			
4 Tray Dispenser	Prewash, Main Wash (with liquid detergent cup), Bleach, Fabric Softener	Prewash, Main Wash (with liquid detergent cup), Bleach, Fabric Softener	Prewash, Main Wash (with liquid detergent cup), Bleach, Fabric Softener
TrueBalance™ Anti-Vibration System	•	•	•
SmartDiagnosis™	•	•	•
Leveling Legs	4 Adjustable Legs	4 Adjustable Legs	4 Adjustable Legs
Easy Loading TiITub™	•	•	•
MOTOR AND AGITATOR			
Motor Type	Direct Drive Motor	Direct Drive Motor	Direct Drive Motor
Max RPM	1,200	1,200	1,200
MATERIALS AND FINISHES			
NeveRust™ Stainless Drum	•	•	•
Cabinet	PCM	PCM	PCM
Door Rim	Silver Rimmed Glass Door	Chrome Rimmed Glass Door	Chrome Rimmed Glass Door
Available Colors	White (W)	White (W), Wild Cherry Red (R)	White (W), Wild Cherry Red (R)
POWER SOURCE			
Power Source	Electric	Electric	Electric
Ratings	UL Listed	UL Listed	UL Listed
Electrical Requirements	120V, 10 Amps	120V, 10 Amps	120V, 10 Amps
OPTIONAL ACCESSORIES			
Pedestal	WDP4W	WDP4W, WDP4R	WDP4W, WDP4R
Stacking Kit	KSTK1	KSTK1	KSTK1
Product / Shipping Weight	180.7 / 191.8	181.8 / 192.9	189 / 199

WM3470H_A

WM4070H_A

WM8000H_A

4.0 cu. ft.	4.3 cu. ft.	5.1 cu. ft.
•	•	•
12	14	14
Cotton / Normal, Bulky / Large, Perm. Press, Delicates, Hand Wash / Wool, Speed Wash, Sanitary, Heavy Duty, BrightWhites™, Towels, Allergiene™, Tub Clean	Cotton / Normal, Bulky / Large, Perm. Press, Delicates, Hand Wash / Wool, Speed Wash, Tub Clean, Sanitary, Allergiene™, Heavy Duty, Bright Whites™, Towels, Drain + Spin, Small Load	Cotton / Normal, Bulky / Large, Perm. Press, Delicate, Hand Wash / Wool, Speed Wash, Sanitary, Heavy Duty, BrightWhites™, Towels, Allergiene™, Tub Clean, Small Load, Jumbo Wash
11	12	12
Prewash, Rinse + Spin, Delay Wash, Custom Program, Extra Rinse, Child Lock, ColdWash™, Signal On / Off, Steam, FreshCare™, TurboWash™	Prewash, Rinse + Spin, Delay Wash, Custom Program, Extra Rinse, Child Lock, ColdWash™, Signal On / Off, Steam, FreshCare™, TurboWash™, Drum Light	Prewash, Rinse + Spin, Delay Wash, Custom Program, Extra Rinse, Child Lock, ColdWash™, Signal On / Off, Steam, FreshCare™, TurboWash™, Drum Light
Extra Hot, Hot, Warm, Cold, Tap Cold (All Cold Rinses)	Extra Hot, Hot, Warm, Cold, Tap Cold (All Cold Rinses)	Extra Hot, Hot, Warm, Cold, Tap Cold (All Cold Rinses)
Extra High (1,200 max.), High, Medium, Low, No Spin	Extra High (1,300 max.), High, Medium, Low, No Spin	Extra High (1,300 max.), High, Medium, Low, No Spin
Automatically adjusts to the size of load	Automatically adjusts to the size of load	Automatically adjusts to the size of load
5	5	5
•	•	•
•	•	•
•	•	•
•	•	•
Prewash, Main Wash (with liquid detergent cup), Bleach, Fabric Softener	Prewash, Main Wash (with liquid detergent cup), Bleach, Fabric Softener	Prewash, Main Wash (with liquid detergent cup), Bleach, Fabric Softener
•	•	•
•	•	•
4 Adjustable Legs	4 Adjustable Legs	4 Adjustable Legs
•	•	•
Direct Drive Motor	Direct Drive Motor	Direct Drive Motor
1,200	1,300	1,300
•	•	•
PCM	PCM	PCM
Large Chrome Rimmed Glass Door with Dark Blue Tinted Cover	Large Square Chrome Rimmed Glass Door with Dark Blue Tinted Cover	Large Square Chrome Rimmed Glass Door with Dark Blue Tinted Cover
White (W), Graphite Steel (V)	White (W), Graphite Steel (V)	White (W), Graphite Steel (V)
Electric	Electric	Electric
UL Listed	UL Listed	UL Listed
120V, 10 Amps	120V, 10 Amps	120V, 10 Amps
WDP4W, WDP4V	WDP4W, WDP4V	WDP5W, WDP5V
KSTK1	KSTK1	KSTK2
192 / 207.4	200.2 / 215.6	227.1 / 233.7

FRONT LOAD DRYER SPECIFICATIONS

ELECTRIC / GAS DRYERS

DLE2250W / DLG2251W

DLEX2650 / DLGX2651

DLEX3070 / DLGX3071

Capacity	7.1 cu. ft.	7.3 cu. ft.	7.3 cu. ft.
DRYING PROGRAMS	7	9	12
Programs (Sensor Dry)	Cotton / Normal, Perm. Press, Towels, Delicates	Cotton / Normal, Perm. Press, Towels, Delicates, Heavy Duty, SteamFresh™, SteamSanitary™	Cotton / Normal, Perm. Press, Towels, Delicates, Small Load, Heavy Duty, Bulky / Large, SteamFresh™, SteamSanitary™, Anti-Bacterial
Programs (Manual Dry)	Speed Dry, Freshen Up, Air Dry	Speed Dry, Air Dry	Speed Dry, Air Dry
No. of Options	8	10	10
Options	More Time, Less Time, Custom Program, Damp Dry Signal, Wrinkle Care, Child Lock, Anti-Bacterial, End of Cycle Signal	More Time, Less Time, Custom Program, Damp Dry Signal, Wrinkle Care, Child Lock, ReduceStatic™, EasyIron™, Rack Dry, End of Cycle Signal	More Time, Less Time, Custom Program, Damp Dry Signal, Wrinkle Care, Child Lock, ReduceStatic™, EasyIron™, Rack Dry, End of Cycle Signal
Temperature Settings	High, Medium High, Medium, Low, Ultra Low	High, Medium High, Medium, Low, Ultra Low	High, Medium High, Medium, Low, Ultra Low
Drying Levels	Very Dry, More Dry, Normal Dry, Less Dry, Damp Dry	Very Dry, More Dry, Normal Dry, Less Dry, Damp Dry	Very Dry, More Dry, Normal Dry, Less Dry, Damp Dry
Manual Dry Times	60 min., 50 min., 40 min., 30 min., 20 min., More Time / Less Time	60 min., 50 min., 40 min., 30 min., 20 min., More Time / Less Time	60 min., 50 min., 40 min., 30 min., 20 min., More Time / Less Time

FABRIC CARE FEATURES

Sensor Dry	•	•	•
SteamFresh™ Cycle		•	•
SteamSanitary™ Cycle		•	•
ReduceStatic™ Option		•	•
EasyIron™ Option		•	•

CONVENIENCE FEATURES

SmartDiagnosis™	•	•	•
FlowSense™ Duct Clogging Indicator	•	•	•
Drum Light	•	•	•
Reversible Door	•	•	•
Leveling Legs	4 Adjustable Legs	4 Adjustable Legs	4 Adjustable Legs
Venting Option	Electric: 4 Way Venting Gas: 3 Way Venting	Electric: 4 Way Venting Gas: 3 Way Venting	Electric: 4 Way Venting Gas: 3 Way Venting
Drying Rack		•	•

MATERIALS AND FINISHES

Aluminized Alloy Steel Drum	•	•	•
NeveRust™ Stainless Steel Drum			•
Door Rim	Silver Rimmed Glass Door	Chrome Rimmed Glass Door	Chrome Rimmed Glass Door
Available Colors	White (W)	White (W), Wild Cherry Red (R)	Wild Cherry Red (R), White (W)

POWER SOURCE

	Gas / Electric	Gas / Electric	Gas / Electric
Ratings	CSA Listed	CSA Listed	CSA Listed
Electrical Requirements	120V, 15 Amps (Gas) / 240V, 30 Amps (Electric)	120V, 15 Amps (Gas) / 240V, 30 Amps (Electric)	120V, 15 Amps (Gas) / 240V, 30 Amps (Electric)

OPTIONS

Pedestal	WDP4W	WDP4W / WDP4R	WDP4W / WDP4R
Stacking Kit	KSTK1	KSTK1	KSTK1
LP Conversion Kit	4948EL4002B	4948EL4002B	4948EL4002B
Side Venting Kit	3911EZ9131X	3911EZ9131X	3911EZ9131X
Product / Shipping Weight	126 / 144	129 / 144	129 / 144

TOP LOAD WASHER SPECIFICATIONS

	WT1101CW	WT1201C_	WT4870CW	WT5070CW	WT5170H_	WT6001HV
Capacity	4.3 cu. ft.	4.5 cu. ft.	4.5 cu. ft.	4.7 cu. ft.	4.7 cu. ft.	4.7 cu. ft.
APPEARANCE / ENERGY	Front Control	Front Control	Rear Control	Rear Control	Rear Control	Rear Control
Intelligent Electronic Controls w/Dual LED Display	•	•	•	•	•	•
7" TFT LCD Touch Screen						•
ENERGY STAR®	•	•	•	•	•	•
WASH PROGRAMS	8	8	8	12	14	15
Wash Programs	Cotton / Normal, Tub Clean, Bulky / Bedding, Heavy Duty, Speed Wash, Delicates, PureColor™, BrightWhites™	Cotton / Normal, Tub Clean, Bulky / Bedding, Heavy Duty, Speed Wash, Delicates, PureColor™, BrightWhites™	Cotton / Normal, Tub Clean, Bulky / Bedding, Heavy Duty, Perm. Press / Casual, Speed Wash, Delicates, BrightWhites™	Cotton / Normal, Bulky / Bedding, Perm. Press / Casual, Speed Wash, Heavy Duty, BrightWhites™, PureColor™, Wool, Towels, Baby Wear, Sports Wear, Tub Clean	Cotton / Normal, Bulky / Bedding, Perm. Press / Casual, Speed Wash, Heavy Duty, BrightWhites™, PureColor™, Wool, Towels, Baby Wear, Sports Wear, Sanitary, Delicates, Tub Clean	Cotton / Normal, Bulky / Bedding, Perm. Press / Casual, Speed Wash, Heavy Duty, BrightWhites™, PureColor™, Wool, Towels, Baby Wear, Sports Wear, Sanitary, Delicates, Tub Clean, Personal Cycle
No. of Options	10	10	12	12	12	13
Options	Soak, Extra Rinse, Fabric Softener, Delay Wash, Child Lock, Custom Program, Signal, Rinse + Spin, Spin Only, ColdWash™	Soak, Extra Rinse, Fabric Softener, Delay Wash, Child Lock, Custom Program, Signal, Rinse + Spin, Spin Only, ColdWash™	Soak, Extra Rinse, Fabric Softener, Delay Wash, Child Lock, Custom Program, Signal, Rinse + Spin, Spin Only, ColdWash™, StainCare™, Water Plus	Rinse + Spin, Spin Only, StainCare™, Soak, ColdWash™, Extra Rinse, Fabric Softener, Delay Wash, Child Lock, Custom Program, Signal On / Off	Rinse + Spin, Spin Only, StainCare™, Soak, ColdWash™, Extra Rinse, Fabric Softener, Delay Wash, Child Lock, Custom Program, Signal On / Off	Rinse + Spin, Spin Only, StainCare™, Soak, ColdWash™, Extra Rinse, Fabric Softener, Delay Wash, Child Lock, Custom Program, Signal On / Off, Smart Grid Ready
No. of Wash / Rinse Temps	Hot, Warm, Eco Warm, Cold, Tap Cold (All Cold Rinses)	Hot, Warm, Eco Warm, Cold, Tap Cold (All Cold Rinses)	Hot, Warm, Eco Warm, Cold, Tap Cold (All Cold Rinses)	Hot, Warm, Eco Warm, Cold, Tap Cold (All Cold Rinses)	Extra Hot, Hot, Warm, Cold, Tap Cold (All Cold Rinses)	Extra Hot, Hot, Warm, Cold, Tap Cold (All Cold Rinses)
Spin Speeds	High, Medium, Low, No Spin	High, Medium, Low, No Spin	Extra High, High, Medium, Low, No Spin	Extra High, High, Medium, Low, No Spin	Extra High, High, Medium, Low, No Spin	Extra High, High, Medium, Low, No Spin
No. of Water Levels	Automatically adjusts to the size of load	Automatically adjusts to the size of load	Automatically adjusts to the size of load	Automatically adjusts to the size of load	Automatically adjusts to the size of load	Automatically adjusts to the size of load
No. of Soil Levels	3	3	3	3	3	3
FABRIC CARE FEATURES						
SmartRinse™ Jet Spray System	•	•	•	•	•	•
ColdWash™	•	•	•	•	•	•
WaveForce™		•		•	•	•
CONVENIENCE FEATURES						ThinQ™ Technology
TrueBalance™ Anti-Vibration System	•	•	•	•	•	•
SmartDiagnosis™	•	•	•	•	•	•
MOTOR AND AGITATOR	Direct Drive Motor	Direct Drive Motor	Direct Drive Motor	Direct Drive Motor	Direct Drive Motor	Direct Drive Motor
Max RPM	1,100	1,100	1,100	1,100	1,100	1,100
MATERIALS AND FINISHES						
NeveRust™ Stainless Steel Drum	•	•	•	•	•	•
Available Colors	White (W)	White (W) Graphite Steel (V)	White (W)	White (W)	White (W), Graphite Steel (V)	Graphite Steel (V)
POWER SOURCE	Electric	Electric	Electric	Electric	Electric	Electric
Ratings	CSA Listed	CSA Listed	CSA Listed	CSA Listed	CSA Listed	CSA Listed
Electrical Requirements	120V, 5 Amps	120V, 5 Amps	120V, 5 Amps	120V, 10 Amps	120V, 10 Amps	120V, 10 Amps
Product / Shipping Weight	132 / 149.6	132 / 149.6	147.4 / 171.6	145.5 / 172	145.5 / 172	145.5 / 172

TOP LOAD DRYER SPECIFICATIONS

CONFIRM SPECS

ELECTRIC / GAS DRYERS **DLE1101 / DLG1102** **DLEY1201 / DLGY1202** **DLE4870 / DLG4871** **DLEX5170 / DLGX5171** **DLEX6001 / DLGX6002**

Capacity	7.3 cu. ft.	7.3 cu. ft.	7.3 cu. ft.	7.3 cu. ft.	7.3 cu. ft.
APPEARANCE	Front Control	Front Control	Rear Control	Rear Control	Rear Control
Intelligent Electronic Controls w/Dual LED Display	•	•	•	•	
7" TFT LCD Touch Screen					•
DRYING PROGRAMS	9	12	8	14	15
Programs (Sensor Dry)	Cotton / Normal, Perm. Press / Casual, Heavy Duty, Delicates, Towels, Small Load	Cotton / Normal, Perm. Press / Casual, Heavy Duty, Delicates, Towels, Small Load	Cotton / Normal, Perm. Press / Casual, Heavy Duty, Delicates, Small Load, Anti-Bacterial	Cotton / Normal, Perm. Press / Casual, Heavy Duty, Bulky Bedding, Delicates, Anti-Bacterial, Towels, Small Load, Sports Wear, SteamFresh™, SteamSanitary™	Cotton / Normal, Perm. Press / Casual, Heavy Duty, Bulky Bedding, Delicates, Anti-Bacterial, Towels, Small Load, Sports Wear, SteamFresh™, SteamSanitary™, Personal Cycle
Programs (Manual Dry)	Speed Dry, Air Dry, Freshen Up	Speed Dry, Air Dry, Freshen Up	Speed Dry, Air Dry	Speed Dry, Air Dry, Rack Dry	Speed Dry, Air Dry, Rack Dry
No. of Options	7	7	8	9	10
Options	More Time, Less Time, Wrinkle Care, Custom Program, Child Lock, End of Cycle Signal, Damp Dry Signal	More Time, Less Time, Wrinkle Care, Custom Program, Child Lock, End of Cycle Signal, Damp Dry Signal	More Time, Less Time, Wrinkle Care, Custom Program, Child Lock, End of Cycle Signal, Damp Dry Signal, Rack Dry	More Time, Less Time, Wrinkle Care, Custom Program, Child Lock, ReduceStatic™, EasyIron™, Damp Dry Signal, End of Cycle Signal	More Time, Less Time, Wrinkle Care, Custom Program, Child Lock, ReduceStatic™, EasyIron™, Damp Dry Signal, End of Cycle Signal, Smart Grid Ready
Temperature Settings	High, Medium High, Medium, Low	High, Medium High, Medium, Low	High, Medium High, Medium, Low, Ultra Low	High, Medium High, Medium, Low, Ultra Low	High, Medium High, Medium, Low, Ultra Low
Drying Levels	Very Dry, More Dry, Normal Dry, Less Dry, Damp Dry	Very Dry, More Dry, Normal Dry, Less Dry, Damp Dry	Very Dry, More Dry, Normal Dry, Less Dry, Damp Dry	Very Dry, More Dry, Normal Dry, Less Dry, Damp Dry	Very Dry, More Dry, Normal Dry, Less Dry, Damp Dry
Manual Dry Times	60-50-40-30-20 min., More Time / Less Time	60-50-40-30-20 min., More Time / Less Time	60-50-40-30-20 min., More Time / Less Time	60-50-40-30-20 min., More Time / Less Time	60-50-40-30-20 min., More Time / Less Time
FABRIC CARE FEATURES	Sensor Dry	Sensor Dry	Sensor Dry	Sensor Dry	Sensor Dry
SteamFresh™ Cycle		•		•	•
SteamSanitary™ Cycle		•		•	•
ReduceStatic™ Option		•		•	•
EasyIron™ Option		•		•	•
CONVENIENCE FEATURES					ThinQ™ Technology
SmartDiagnosis™	•	•	•	•	•
FlowSense™ Duct Indicator	•	•	•	•	•
Drum Light	•	•	•	•	•
Reversible Door	•	•	•	•	•
Venting Option*	Electric: 4 Way Venting / Gas: 3 Way Venting	Electric: 4 Way Venting / Gas: 3 Way Venting	Electric: 4 Way Venting / Gas: 3 Way Venting	Electric: 4 Way Venting / Gas: 3 Way Venting	Electric: 4 Way Venting / Gas: 3 Way Venting
Drying Rack				•	•
MATERIALS AND FINISHES					
Aluminized Alloy Steel Drum	•	•	•		
NeveRust™ Stainless Drum				•	•
Available Colors	White (W)	White (W), Graphite Steel (V)	White (W)	White (W), Graphite Steel (V)	Graphite Steel (V)
POWER SOURCE	Gas / Electric	Gas / Electric	Gas / Electric	Gas / Electric	Gas / Electric
Ratings	CSA Listed	CSA Listed	CSA Listed	CSA Listed	CSA Listed
Electrical Requirements	120V, 15 Amps (Gas) / 240V, 30 Amps (Electric)	120V, 15 Amps (Gas) / 240V, 30 Amps (Electric)	120V, 15 Amps (Gas) / 240V, 30 Amps (Electric)	120V, 15 Amps (Gas) / 240V, 30 Amps (Electric)	120V, 15 Amps (Gas) / 240V, 30 Amps (Electric)
LP Conversion Kit	4948EL4002B	4948EL4002B	4948EL4002B	4948EL4002B	4948EL4002B
Product / Shipping Weight - Electric (Gas)	121.7 / 139.6 (125.4 / 143.3)	121.7 / 139.6 (125.4 / 143.3)	125.4 / 137.7 (128.9 / 141.2)	133.2 / 145.5 (136.7 / 149)	133.2 / 145.5 (136.7 / 149)

* Side venting kit available: 3911EZ9131X

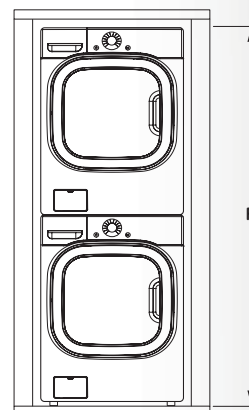
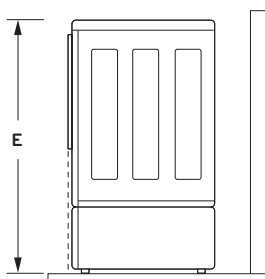
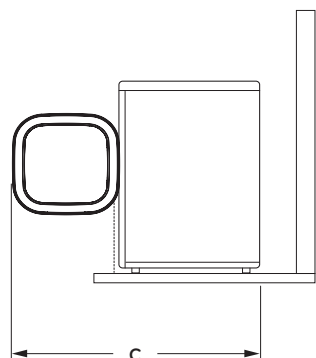
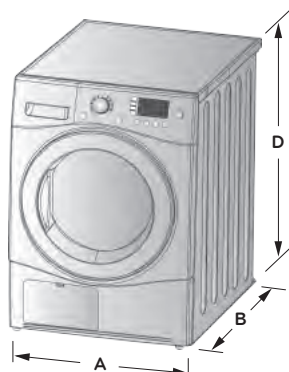
SPECIALTY LAUNDRY SPECIFICATIONS

	WM3987HW	WM3455H_	WM1355HW	DLEC855W
TYPE	FULL SIZE WASHER / DRYER COMBO	COMPACT WASHER / DRYER COMBO	24" COMPACT WASHER	24" COMPACT DRYER
Capacity (cu. ft.)	3.6 cu. ft.	2.3 cu. ft.	2.3 cu. ft.	4.2 cu. ft.
Controls	Dial-A-Cycle™ w/LED Display	Dial-A-Cycle™ w/LED Display	Dial-A-Cycle™ w/LED Display	Dial-A-Cycle™ w/LED Display
PERFORMANCE				
Internal Water Heater	•	•	•	•
Direct Drive Motor	•	•	•	•
Max. Spin Speeds	1200 RPM	1300 RPM	1300 RPM	
Wash Cycles	9	9	9	
Dry Cycles	6	6		9
Options	9	9	10	11
No. of Soil Levels	5		5	
RollerJets™	•			
SenseClean™	•	•	•	
Sensor Dry	•	•		•
NeveRust™ Stainless Steel Drum	•	•	•	•
ENERGY STAR®			•	
Precise Temperature Control w/Variable Heat Source				•
SPECIAL CYCLES / OPTIONS				
Sanitary Cycle	•	•	•	
SpeedWash™ Cycle	•	•	•	
Speed Dry Cycle				•
Stain Cycle Option	•	•	•	
Hand Wash / Wool	•	•	•	
Delicates	•	•	•	•
Bulky / Large	•	•	•	
Delay Wash	Up to 19 Hours	Up to 19 Hours	Up to 19 Hours	
TubClean™ Cycle	•	•	•	
Custom Program		•	•	•
CONVENIENCE				
TrueBalance™	•			
LoDecibel™	•	•	•	•
Dispenser	4 Tray	3 Tray	3 Tray	
Wrinkle Care Option				•
Child Lock	•	•	•	•
Tub / Drum Light	White LED			•
Easy Loading TilTub™	•	•	•	
Ventless Condensing Drying System	•	•		•
GENERAL FEATURES				
Available Colors	White (W)	White (W), Silver (S)	White (W)	White (W)
Pedestal Available	See Page 31	N / A	N / A	N / A
Stacking Kit Available	See Page 31	N / A	See Page 31	See Page 31
Requirements	120V, 12 Amps	120V, 12 Amps	120V, 12 Amps	240V, 15 Amps
Weight (lbs)	201	158	150	150

N / A = Not Available

FRONT LOAD LAUNDRY DIMENSIONS & INSTALLATION

WASHER AND DRYER



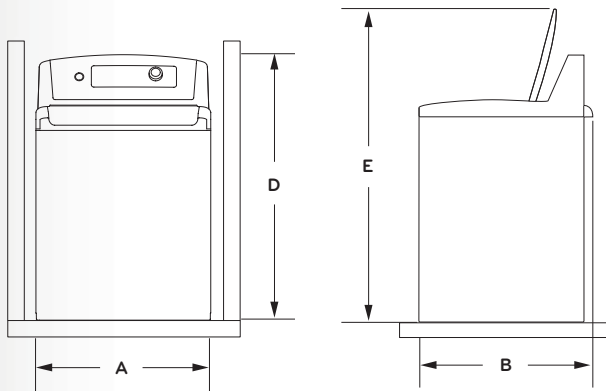
PEDESTAL DIMENSIONS
(Width x Height x Depth)
WDP4W/R/V – 27" x 13 3/5" x 28 2/5"
WDP5W/V – 29" x 13 3/5" x 29 2/5"

	A	B	C	D	E	F
	WIDTH	DEPTH	DEPTH WITH DOOR OPEN	HEIGHT	HEIGHT WITH PEDESTAL	HEIGHT WHEN STACKED
FRONT LOAD WASHERS						
WM2250CW	27"	29 3/4"	51"	39"	52 3/5"	77 1/2"
WM2650HLA	27"	29 3/4"	51"	39"	52 3/5"	77 1/2"
WM3070HLA	27"	29 3/4"	51"	39"	52 3/5"	77 1/2"
WM3470HLA	27"	29 3/4"	51"	39"	52 3/5"	77 1/2"
WM4070HLA	27"	29 3/4"	51"	39"	52 3/5"	77 1/2"
WM8000HLA	29"	32 3/10"	57"	40 4/5"	54 11/16"	81 5/8"
FRONT LOAD DRYERS						
DLE2250W / DLG2251W	27"	30"	51"	39"	52 3/5"	77 1/2"
DLEX2650_ / DLGX2651L	27"	30"	51"	39"	52 3/5"	77 1/2"
DLEX3070_ / DLGX3071L	27"	30"	51"	39"	52 3/5"	77 1/2"
DLEX3470_ / DLGX3471L	27"	30"	51"	39"	52 3/5"	77 1/2"
DLEX4070_ / DLGX4071L	27"	30"	51"	39"	52 3/5"	77 1/2"
DLEX8000_ / DLGX8001L	29"	32 3/10"	57"	40 4/5"	54 11/16"	81 5/8"
SPECIALTY						
Full Size Washer/Dryer Combo WM3987HW	27"	29 3/4"	51"	38 11/16"	52 3/8"	–
Compact Washer Dryer Combo WM3455HL	24"	25 1/4"	45"	33 1/2"	–	–
24" Compact Washer WM1355HW	24"	25 1/4"	45"	33 1/2"	–	–
24" Compact Dryer DLEC855W	24"	25 1/4"	45"	33 1/2"	–	67"

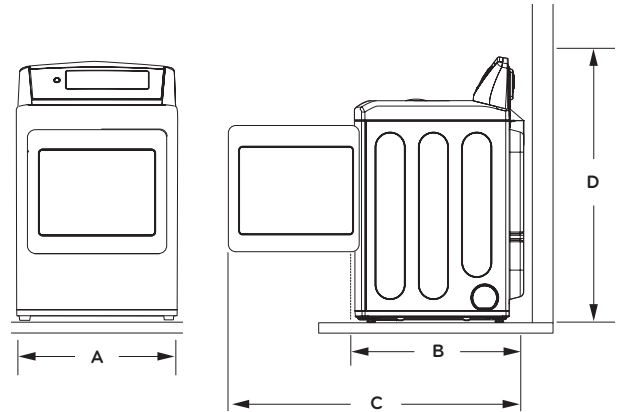
Note: All LG Front Load Washers and Dryers have 4 adjustable leveling legs.

TOP LOAD LAUNDRY DIMENSIONS & INSTALLATION

WASHER



DRYER



A	B	C	D	E
WIDTH	DEPTH	DEPTH WITH DRYER DOOR OPEN	HEIGHT	HEIGHT WITH WASHER LID OPEN

TOP LOAD WASHERS

WT1101CW	27"	28 3/8"	–	40 3/16"	54 5/16"
WT1201C_	27"	28 3/8"	–	40 3/16"	54 5/16"
WT4870CW	27"	28 3/8"	–	45 3/8"	55 3/4"
WT5070CW	27"	28 3/8"	–	45 3/8"	55 3/4"
WT5170H_	27"	28 3/8"	–	45 3/8"	55 3/4"
WT6001HV	27"	28 3/8"	–	45 3/8"	55 3/4"

TOP LOAD DRYERS

DLE1101W / DLG1102W	27"	28 15/16"	50 1/4"	40 3/16"	–
DLEY1201_ / DLGY1202_	27"	28 15/16"	50 1/4"	40 3/16"	–
DLE4870W / DLG4871W	27"	28 15/16"	50 1/4"	45 7/16"	–
DLEX5170_ / DLGX5171L	27"	28 15/16"	50 1/4"	45 7/16"	–
DLEX6001V / DLGX6002V	27"	28 15/16"	50 1/4"	45 7/16"	–

Note: All LG Top Load Washers and Dryers have 4 adjustable leveling legs.

LG LAUNDRY PAIRS ARE AS VERSATILE AS YOU ARE

FRONT LOAD INSTALLATION FLEXIBILITY

Load and unload laundry with less bending by adding our optional drawer pedestals. They're also a great place to store laundry products.



Save valuable space by stacking the washer and dryer with an optional stacking kit.

Create a beautiful laundry room by placing the washer side by side or under a countertop.

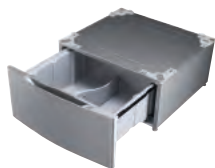


OPTIONAL ACCESSORIES

		Graphite Steel	Wild Cherry Red	White
24" (Compact)	Stacking Kit (included with dryer)			5001EL2001H
27" (Standard Size)	Pedestal	WDP4V	WDP4R	WDP4W
	Stacking Kit		KSTK1	
	Side Venting Kit		3911EZ9131X	
29" (Mega Capacity)	Pedestal	WDP5V	-	WDP5W
	Stacking Kit		KSTK2	
	Side Venting Kit		383EEL9001L	
Touch-up Paint		TUP-3796VS	TUP-3796CP	TUP-3796WH
LP Conversion Kit		4948EL4002B (installed by a qualified technician only)		

DESIGNER COLOR CHOICES

Considering how much time customers spend in the laundry room, shouldn't it be beautiful? LG laundry pairs have distinctive styling and are available in colors from classic to elegant to bold.



WDP4V
Graphite Steel



WDP4R
Wild Cherry Red



WDP4W
White

YOU HAVE THE QUESTIONS
LG HAS THE ANSWERS



Q I'M TIRED OF SPENDING HOURS ON END TO FINISH MY FAMILY'S LAUNDRY. CAN YOU HELP?

A Now, those days are gone. LG's revolutionary TurboWash™ Technology allows you to save 20 minutes on larger loads, with outstanding cleaning performance!+ It's like pressing the fast forward button on your laundry.

Q WHAT'S MY BEST OPTION IF I DO A LOT OF LAUNDRY AND OFTEN WASH BULKY BEDDING?

A When it comes to laundry capacity, big is good, bigger is better, but biggest is best. With the largest capacity washer available++, now you can wash a king size comforter and full set of bedding in a single load! With a 5.1 cu. ft. of mega capacity washer and 9.0 cu. ft. mega capacity dryer, you'll definitely have more room to clean.

Q HOW CAN I WATCH MY FAMILY'S BUDGET?

A Our unique ColdWash™ Technology can save you cold, hard cash. It gives you cold water savings with warm water performance.

Q WE'RE A BUSY FAMILY, ALWAYS ON THE GO...HOW CAN LG WASHERS MEET OUR NEEDS?

A We're always moving, too. Our 6Motion™ Technology uses a combination of 6 different wash motions to get your clothes even cleaner, without compromising gentleness.

Q MY SON HAS ALLERGIES AND MY DAUGHTER THINKS DUST MITES ARE DISGUSTING....CAN LG WASHERS HELP?

A We get it. The Allergiene™ Cycle incorporates steam so the wash cycle can reach the optimal temperature to kill dust mites and remove pet dander without overheating your clothes. In fact, this cycle is certified asthma & allergy friendly™ by the AAFA.*

Q MY LAUNDRY ROOM IS ON THE SECOND FLOOR, RIGHT NEXT TO MY BEDROOM SO HOW DO I KEEP THE NOISE DOWN?

A No worries. Our TrueBalance™ Anti-Vibration System reduces vibration and noise levels so you can enjoy smooth, quiet operation no matter where your laundry room is.

Q I ALWAYS FORGET TO PUT MY CLOTHES IN THE DRYER. ARE THERE ANY FEATURES THAT CAN HELP ME?

A No need to worry. Our FreshCare™ Option will periodically tumble the wash load to keep clothes smelling fresh for up to 8 hours until you put them in the dryer.

Q I CARE ABOUT THE ENVIRONMENT...WHAT CAN I DO TO BE MORE GREEN?

A LG has you covered. LG Steam Washers™ are among the most water and energy efficient washers on the market today, saving up to 11,344 gallons of water and up to 61% more energy per year.** That's savings you can see on your utility bills.

Q DINGY WHITES MAKE ME CRINGE...HOW CAN I GET WHITER WHITES?

A They make us cringe, too. That's why our BrightWhite™ Cycle works to bring water to the optimal temperature to make sure your whites get white.

Q SOMETHING THAT CLEANS SHOULDN'T BE SMELLY, RIGHT?

A Of course not. That's why our TubFresh™ System includes an advanced tub cleaning cycle and other innovations like a clever door magnet that props the door open so your washer stays fresh.

Q I HAVE A DATE IN ONE HOUR...IS THERE A SPEEDY WASH AND DRY CYCLE?

A Then you can relax. With our SpeedWash™ and Speed Dry Cycle, you can wash and dry a load in 30 minutes flat.

Q HOW CAN I TREAT SMALL STAINS WITHOUT WASHING?

A See spot run. Our SpotClean™ Cycle is designed to use the power of steam to effectively remove stains and freshen clothes right in the dryer.

Q STATIC CLING DRIVES ME CRAZY...WHAT CAN I DO?

A Problem solved. Our ReduceStatic™ Option injects steam late in the drying cycle to virtually eliminate static cling.

Q HOW CAN I CLEAN DECORATIVE PILLOWS, BACKPACKS AND TEDDY BEARS?

A Oh my. Just throw them in the dryer and our SteamSanitary™ Cycle will work to refresh and sanitize.

Q I LIKE TO LOOK POLISHED AND WRINKLE-FREE...CAN LG HELP?

A We can help you win the battle. The SteamFresh™ Cycle reduces wrinkles and odors in just 20 minutes – without detergents.

Q IRONING IS SUCH A HASSLE....CAN LG SHOW ME AN EASIER WAY TO NEAT AND CRISP?

A Ironing shouldn't be such a chore. Our EasyIron™ Option makes ironing a breeze by lightly moistening fabrics to relax wrinkles.

*ASTHMA AND ALLERGY FRIENDLY and the ASTHMA AND ALLERGY FRIENDLY LOGO are Certification Marks and Trademarks of ALLERGY STANDARDS LIMITED. The ASTHMA AND ALLERGY FOUNDATION OF AMERICA is a Registered Trademark of AAFA.

**When compared to a conventional, non-ENERGY STAR top load, deep fill washer manufactured prior to 2004. All estimates assume households with an electric water heater and electric dryer. Dollar savings assume the following electric and water rates: \$0.1068 / kWh; \$0.007501 / gallon. Source: U.S. EPA 2010 ENERGY STAR® Product Databook Worksheet.

+Based on AHAM-HLW-1-2010 test protocol. Cotton/Normal or comparable cycle at default settings, 8 lb loads, front load washers only. Excludes other LG manufactured products. Excludes quick wash or comparable cycles intended for small, lightly soiled loads only.

++Based on ENERGY STAR® qualified residential washers as published by the DOE, 1/3/12.

LAUNDRY ROOM CHOICES



WHICH WASHER IS RIGHT FOR YOU?

Front load or top load? Whichever you choose, all LG washers offer the reliability of a Direct Drive motor, and reduce energy costs and water consumption versus conventional top load washers. LG front load washers are the ultimate in energy and water efficiency. They are innovatively designed to offer deep cleaning on a variety of fabrics, including delicates, and are incredibly gentle on clothes. LG's high-efficiency top load washers offer award-winning innovation in a traditional, convenient top load style. Featuring large capacities, these washers can tackle more laundry in fewer loads.



FRONT-LOAD



HE TOP LOAD



CONVENTIONAL TOP LOAD

Wash Performance	Best	Better	Good
Spin Performance	Fastest	Fast	Slow
Water Consumption (approx.)*	2.64 Gallons per 2.20 lbs.	5.28 Gallons per 2.20 lbs.	6.87 Gallons per 2.20 lbs.
Energy Consumption	Least	Less	Most
Wash Time	Shorter	Shorter	Shortest
Capacity	Larger	Largest	Smallest
Gentleness on Clothes	Best	Better	Poor
Tangling	Least	Less	Most
Installation Flexibility	Side-by-Side; Side-by-Side On Pedestals; Under-Counter; Stacked	Side-by-Side	Side-by-Side

*Water consumption varies by model



WARRANTY

LG WASHERS – FRONT LOAD, TOP LOAD AND COMBOS

Limited Warranty: 1 Year Parts and Labor, 10 Years Motor, Lifetime on Drum*

LG DRYERS – FRONT LOAD, TOP LOAD AND COMPACT

Limited Warranty: 1 Year Parts and Labor*

*Refer to owner's manual for complete warranty details.



LG.COM

**Design, features and specifications are subject to change without notice.
Non-metric weights and measurements are approximate.**

© 2013 LG Electronics USA, Inc. All rights reserved. "LG Life's Good" is a registered trademark of LG Corp. All other product and brand names are trademarks or registered trademarks of their respective companies. 01/13