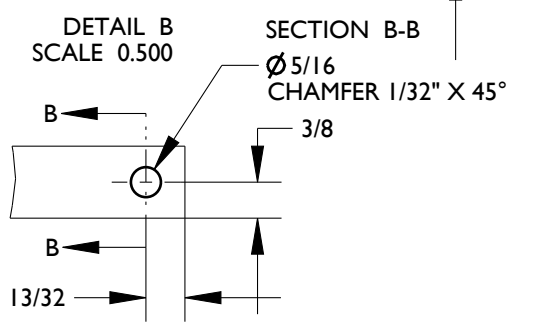
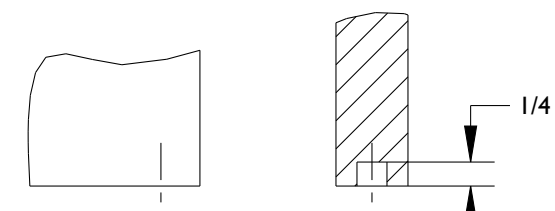
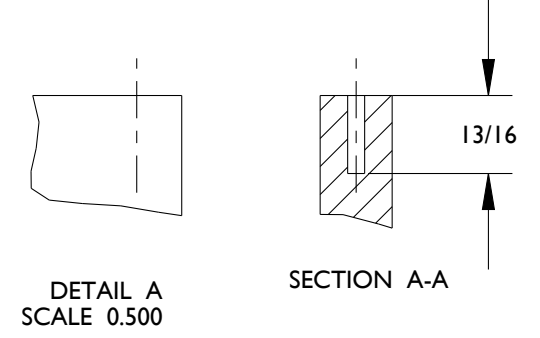
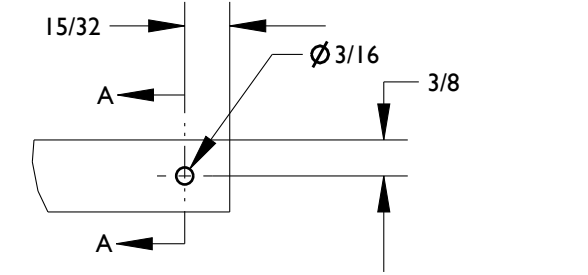
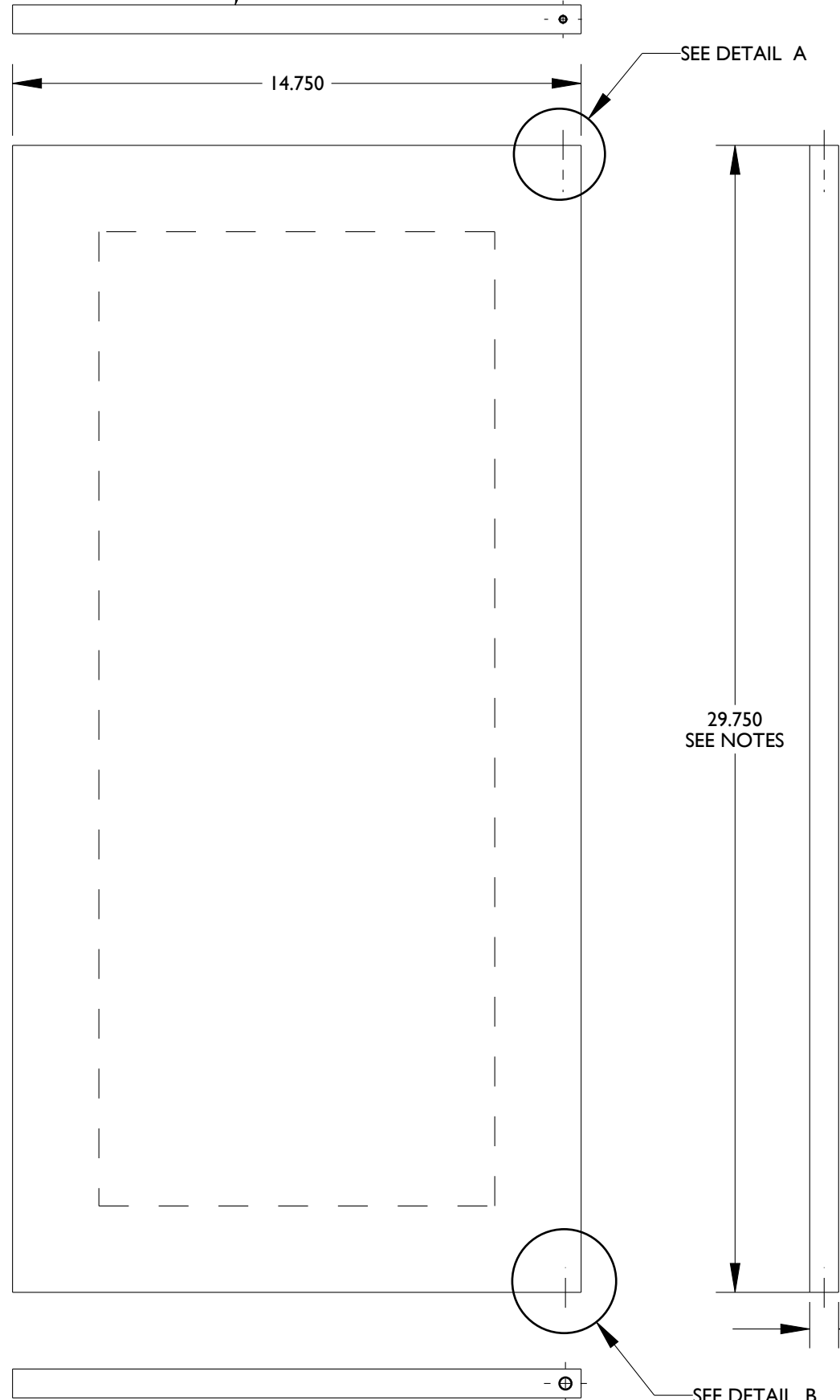


REVISION HISTORY				
REV	ECN	DESCRIPTION	BY	DATE
A		RELEASED	JHZ	02APR10
B		REMOVE NOTCH	JHZ	17MAY10

BACK SURFACE MUST BE A FLUSH FLAT SURFACE  
FOR PANEL DOORS USE A BACKER BOARD



PANEL HEIGHT MAY VARY FOR A TRULY INTEGRATED LOOK. IF IT IS DESIRED THAT THE BOTTOM OF THE REFRIGERATOR PANEL MATCH THE BOTTOM OF THE CABINETRY PLEASE CUT PANEL PER THE FOLLOWING DIMENSIONS.

THESE DIMENSIONS REFER TO THE BOTTOM OF THE CABINETRY, NOT THE BOTTOM OF THE PANELS. TO DETERMINE CABINET TOE KICK HEIGHT MEASURE THE DIFFERENCE BETWEEN THE SURFACE THE APPLIANCE WILL SIT ON AND THE BOTTOM OF THE ADJACENT CABINETRY.

NOTE-APPLIANCE WILL NEED UP TO 3/4" TO THE UNDER SIDE OF COUNTER TO LEAVE ROOM FOR LEVELING ADJUSTMENTS.

CABINET TOE KICK HEIGHT	FINAL PANEL HEIGHT
3 3/4"	29.750
3 7/8"	29.750
4"	29.625
4 1/8"	29.50
4 1/4"	29.375
4 3/8"	29.250
4 1/2"	29.250

PLEASE NOTE: THESE DIMENSIONS WILL VARY BASED ON THE LEVEL OF THE FLOOR. IF FLOOR IS UNEVEN CUT PANEL TO THE NEXT LONGER DIMENSION AND ADJUST LEVEL LEGS TO ACHIEVE PROPER FIT.

THE DOOR PANEL MUST NOT WEIGH MORE THAN 20 POUNDS.

REQ'D	PART NUM	DESCRIPTION	ITEM
-	2000_FULL_OVERLAY_15_R	FULL OVERLAY 15" R	-

UNLESS OTHERWISE SPECIFIED ALL DIMENSIONS ARE IN INCHES .XX ± .03 .XXX ± .015 X° ± 1° HOLE Ø = +.005/- .002 REMOVE BURRS AND SHARP EDGES TO .015 MAX. INTERPRET DIM AND TOL PER ASME Y14.5M-1994 DO NOT SCALE DRAWING		THIRD ANGLE PROJECTION 		
THIS DRAWING IN DESIGN AND DETAIL IS THE PROPERTY OF U-LINE CORPORATION ALL RIGHTS OF DESIGN AND INVENTION ARE RESERVED.		DRAWING NAME FULL OVERLAY 15" R		
MODEL	MATERIAL	SIZE B	DRAWING NUMBER 2000_FULL_OVERLAY_15_R	REV B
ECN	REV DATE	DRAWN BY	DATE DRAWN	SCALE 0.250 SHEET 1 OF 1

THE DOOR PANEL MUST NOT WEIGH MORE THAN 20 POUNDS.