

ASKO
Inspired by Scandinavia

PRO CONSTRUCTION
1400 RPM

Introducing the
new generation of laundry



Introduction

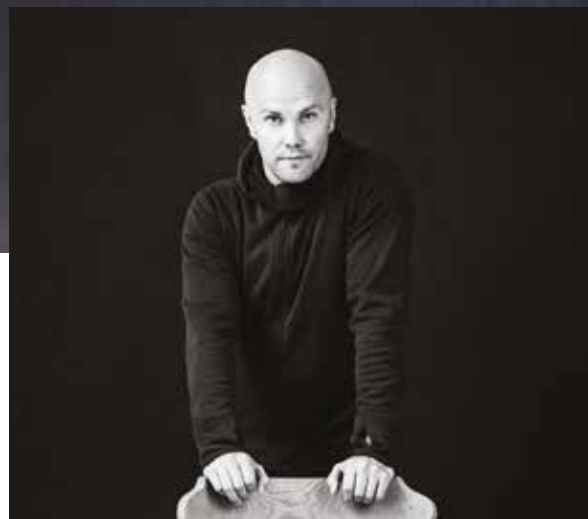
Scandinavian design	4
The ASKO way	5
Fully loaded	6
Models	7

Washers

Programs	9
Modes	10
Dosing	11
Features	12
Models	13

Tumble Dryers

Programs	15
Heat pump	16
Steam	17
Features	18
Lint filters	20
Models	21
Dream machine	23



“The key elements of Scandinavian design – understated elegance, high-quality craftsmanship and natural materials – are reflected in ASKO’s design language.”

Jon Carlehed, Head of Design at ASKO Appliances.

Scandinavian design

The combination of everyday functionalism, environmental concern and clean, pleasant lines is the principal hallmark of Scandinavian design – and that of ASKO. The fundamental idea is that carefully designed products should improve people’s quality of life. To distinguish ourselves in a market of cluttered, complex and voluptuous designs, we aim for a soft, humanistic minimalism based on the principle of quiet being the new loud. The key elements of Scandinavian design – understated elegance, high-quality craftsmanship and natural materials – are reflected in ASKO’s design language. Much emphasis is also placed on functionality. We strive to make life easier by offering truly user-friendly interfaces, integration of practical functions and trouble-free, durable products that please people for a long time.

Eliminating your biggest troubles

In the work to develop our latest washing machines and dryers we met consumers. These meetings became small narratives with different views, ideas and wishes. We learned a lot and started developing a new generation of washing machines and tumble dryers with many improvements and solutions. Here we have collected some of the most common concerns and how we resolve them.

The other way

Everything ends up in bedsheets and laundry gets tangled up

The rotating drum causes the clothes to rotate in the same direction. In the end, they get tangled up with each other. The result is more trouble and a significantly poorer drying result.

Too noisy and vibrations

Living next door to the laundry room or having the washing machine in or nearby the kitchen creates a poorer audio environment and in the long run is perceived as very disturbing.

Dirty rubber ring

Lots of dirt and bacteria accumulate in the rubber seal. It causes bad odors and requires regular and time-consuming cleaning. The rubber seal is also the part of the washing machine that breaks first.

Door too small

Many people with large and active families often wash several times a day. In such a situation, loading and unloading can be extra difficult. The washing machine opening is too small and the clothes get stuck in the rubber seal.

The ASKO way

Butterfly drying

We have solved this problem by creating a unique solution that we call Butterfly drying. The two paddles inside the machine gently push the clothing in a figure eight, to spread the garments out and allow air to evenly circulate through them. This prevents bundling and minimizes creasing in your clothes.

Vibration-free spinning

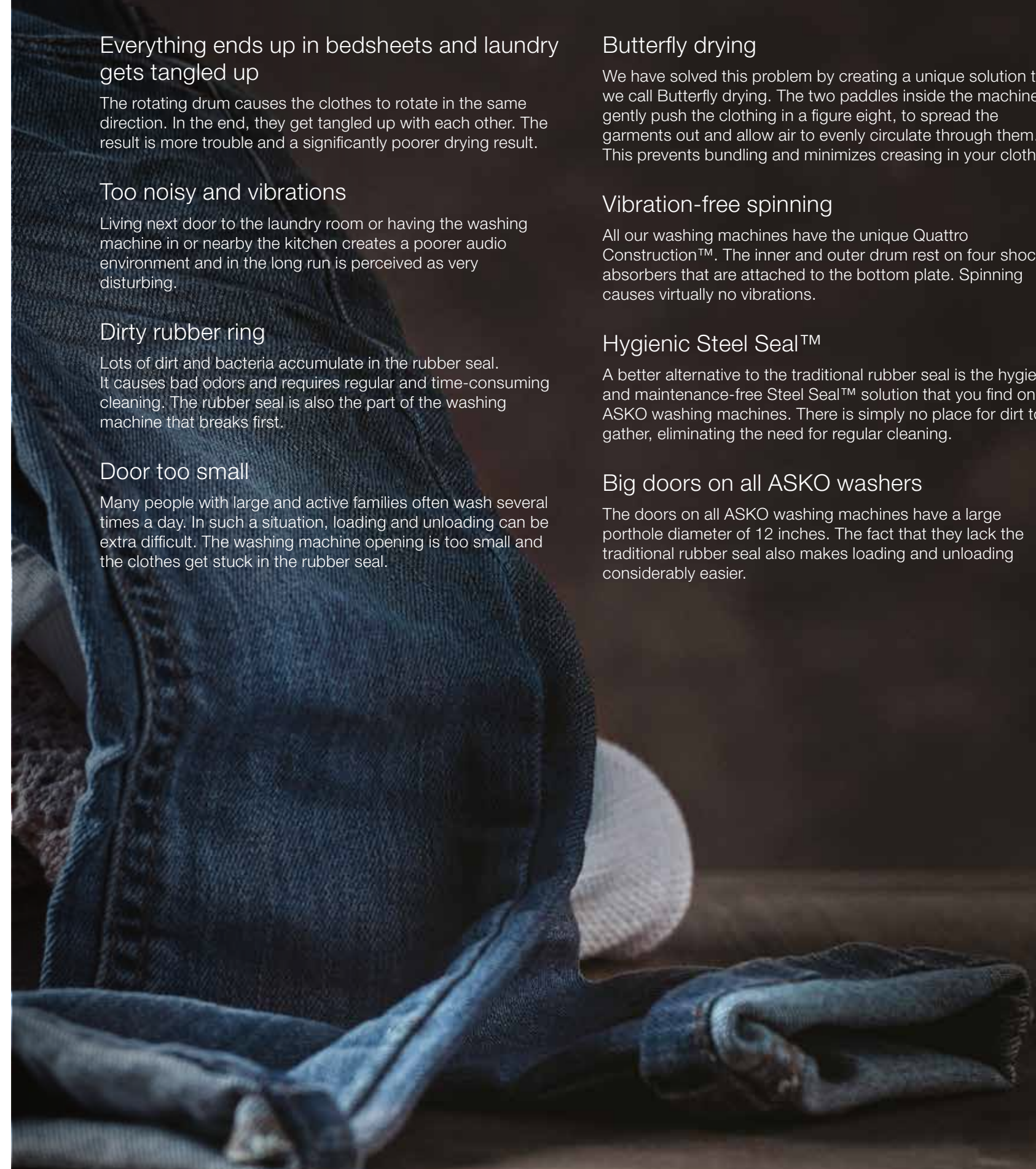
All our washing machines have the unique Quattro Construction™. The inner and outer drum rest on four shock absorbers that are attached to the bottom plate. Spinning causes virtually no vibrations.

Hygienic Steel Seal™

A better alternative to the traditional rubber seal is the hygienic and maintenance-free Steel Seal™ solution that you find on all ASKO washing machines. There is simply no place for dirt to gather, eliminating the need for regular cleaning.

Big doors on all ASKO washers

The doors on all ASKO washing machines have a large porthole diameter of 12 inches. The fact that they lack the traditional rubber seal also makes loading and unloading considerably easier.



Fully loaded

Smarter by design, ASKO Laundry appliances are packed with innovative features and designed to make daily life easier. And because they're made using quality steel parts, you can always look forward to years of reliable operation.

Self-cleaning soap dispenser keeps residue off clothes

Large door for easy clothes removal

Steel Seal™ door for better hygiene



Start/stop button with pause function

QuickPro™ ideal for smaller loads in half the time

Quattro suspension for whisper-quiet operation

Updated controls for faster and more precise control

Air Lift™ paddles achieve faster drying

Soft Drum™ for gentle drying



Sportswear program for gentle treatment of Goretex® and other high-tech apparel

Easy-access lint filter for quicker cleaning

Butterfly Drying™ for less bundling

Styled so perfectly for you

The Style models have a full-size front made from a single piece of solid stainless steel that surrounds the stylish horizontal brushed metal panel. The front, panel, display and other visible components boast a perfect fit and finish and the full color high definition TFT display provides the best possible overview on available functions, modes, and status. We have not compromised on any material, which is why all the knobs and buttons are made of carefully polished metal and designed to offer the best feel and response when used. The Style washing machines and tumble dryers feature a large selection of programs, including an allergy program for the washing machines. Discover the six smart run modes that are your shortcut to getting more from your washing machine: Normal mode, Green mode, Speed mode, Allergy mode, Intensive mode and Night mode.



Make logical choices

For the Logic models we focused on a minimalistic appearance with sleek lines and a balanced color scheme between the front plate, panel and display. Harmony is key here and the Logic models are suited to all types of integration where appearance is important. The Logic models share the same high-quality materials and innovative solutions as the other series, as well as the same innovative laundry care solutions and programs. Explore the five different modes: Normal mode, the eco-friendly Green mode, Speed mode, Allergy mode for sensitive skin and Intensive mode for really dirty clothes. Get effective with the favorite function, enabling you to save four programs for different situations based on how dirty your clothes are and the fabric. This is the logical choice for everyone and caters to the need for both design and function.



A timeless classic

The Classic models share the same technology, construction and smart laundry care functions as the other ASKO models. The front plate, panel and controls are aligned for a discreet but elegant look. The high-quality LCD display is easy to read from different angles with a white background and black digits. Clarity and ease-of-use are two aspects of the interaction philosophy. The program names are displayed in text and are available in as many as 25 languages, all easily selected from the menu. The Classic washing machines have three run modes: Normal, Green and Intensive.



Washers



Programs for all kinds of laundry

In conjunction with the launch of our new generation of washing machines, we are also introducing several new programs. See further down this page for descriptions of the new programs. Other programs are: Everyday, Standard cotton, Mix/synthetic, Wool/hand wash, Time program, Auto, Quick, Heavy, Rinse, Spin, Drain, Easy care, and Drum cleaning.

Jeans

This is a gentle wash cycle designed especially for jeans. A higher water level is used in the main wash while extra rinses ensure that no detergent remains, which can otherwise leave marks on the fabric.

Hygiene

Some items of cotton and linen, such as baby clothing and bed linens, can pick up more stubborn stains. So this program washes at a higher temperature with higher spin speeds to get those items really clean.

Conditioning

This is a short program for adding a waterproofing agent to fabrics. The program uses cold water only and lower spin speeds.

Bedding

For washing large items such as bed sheets, duvets and pillows. This program uses extra water and additional rinses.

Shirts

A program for shirts and blouses that prevents creasing. The program washes at low temperatures using larger amounts of water and lower spin speeds to prevent wear on sensitive fabrics.

Dark wash

For dark laundry, eliminating the risk of detergent spots on fabrics. Extra rinses are added while lower spin speeds ensure that your dark laundry is washed gently and rinsed thoroughly.

Sportswear

A program for clothes with membranes, such as waterproof garments and breathable fabrics. This program is also ideal for sportswear made of mixed materials. This is a short program that washes at low temperatures with lower spin speeds.

Quick Pro

Duration of programs is considered as one of the top irritations that customers experience with washers today. We have combined this insight with our know-how from the commercial area into one new domestic program. The Quick Pro washes a 9 lb load with effective wash results in under an hour.



Mode function is your shortcut to better washing

When using a run mode, different parameters for the specific program are changed to be able to either wash faster, quieter, with greater energy efficiency, or intensity. Our Style models have six different modes, Logic has five, and the Classic models three.

Normal mode

Normal mode means no changes to the program. Enough water, energy and time is used to be able to reach a perfect washing result for normally soiled loads.

Speed mode

When selecting speed mode you give the washing machine the task to deliver perfect washing and rinsing results in a shorter time than normal. To achieve this both more water and energy is added to the washing cycle.

Green mode

If you want to save both water and energy you should choose the Green mode. To achieve the best possible washing and rinsing result but still lower the energy consumption, each stage in the program is prolonged. Total program time will thus be longer compared to normal mode.

Allergy mode

This mode adds water to be able to rinse away all detergent residues from the load as well as from the detergent compartment. More water is used in the Allergy mode but energy and time is also added to achieve best possible washing and rinsing performance.

Intensive mode

In this mode the washing machine has plenty of time to wash up the load, more time than the normal mode. And to really ensure a perfect result for heavily soiled clothes, also more water and energy is added. If the intensive mode is selected temperature will remain at the same level for a longer time.

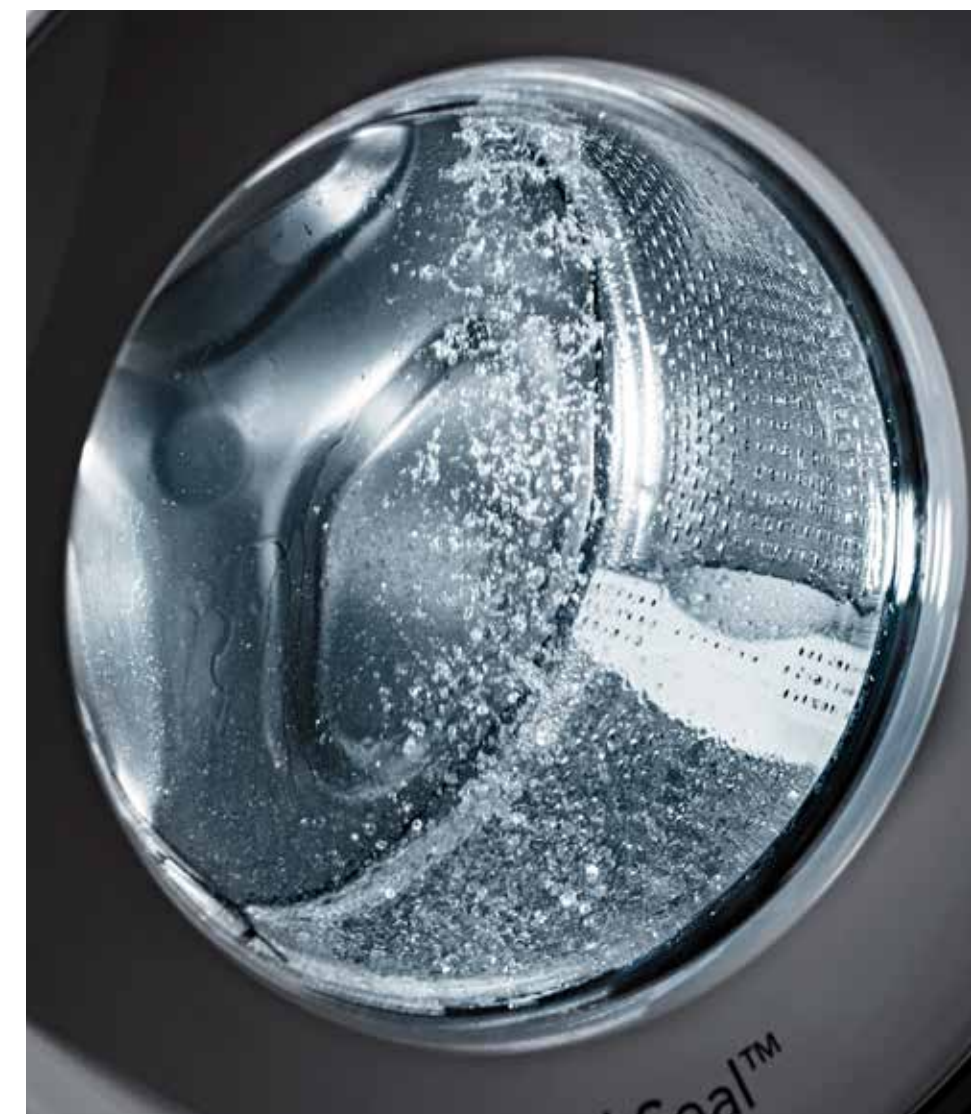
Night mode

Use night mode whenever you need the washing machine to be quieter. The drum movements are gentler and the final spin is done on a lower rpm. Time is added to ensure that the load is washed perfectly.



Dosing with precision

To be on a par with the Auto Dose system, you need to know the weight and soil level of the load, the water hardness and the type of program you are about to run. All of these parameters affect how much detergent is needed. With the Auto Dosing system, the only thing you need to do is select the soil level of the load and then leave the rest of the decision making to the clever algorithms that control the Auto Dose system. In addition to always delivering exactly the right amount of detergent, the Auto Dose system ensures that the water and detergent are well mixed before reaching the clothes in the drum. This eliminates the risk of spots on dark fabrics and improves overall washing performance. We use two large tanks, each of which holds .4 gallons of liquid detergent. The Auto Dose system can be disabled to use standard detergent.



ASKO Pro Wash™ provides extra washing power

Instead of just relying on the water at the bottom of the drum, the ASKO Pro Wash™ system actively circulates the water and detergent mix from the bottom of the drum to the top. On the top of the drum there are two nozzles that spray the mix over the inner drum efficiently soaking the entire load. This means the load is soaked faster, which enables superb washing and rinsing performance even with very short washing cycles. Thanks to the Pro Wash™ system, you can be sure that big loads will be washed and rinsed thoroughly.

Washers



Long-life brushless motor

Our washing machines are fitted with brushless motors to ensure that the machine can cope with the highest spin speeds while reducing noise levels and increasing the life of the machine. High efficiency ensures reduced energy consumption and the motor also allows for speed control, enabling the further development of washing programs.



Steel Seal™ door

A common feature of all commercial washing machines, whether they are used in hotels, beauty salons or retirement homes, is that they have no rubber seal. And there's good reason. Eliminating a rubber door seal that can degrade over time and trap dirt and grime ensures a more hygienic wash. You will also find loading and unloading easier with the Steel Seal™ door solution. All ASKO washers have this long lasting door solution.



Tough on dirt and gentle on fabrics

Washing is a balancing act between the two opposite poles of cleansing action and fabric care. Getting the load clean requires at least some mechanical processing. This is normally achieved with the help of the lifters, drum movements and the drum pattern. But too much mechanical processing will damage fabrics. Our engineers have solved this equation and come up with a smart solution, the Active Drum™. The hourglass-shaped and removable lifters guide the load to the gentler central area of the drum and effectively remove large debris, such as dirt and gravel, to the larger holes at the edge of the drum. Active Drum™ is perfectly balanced to ensure the best possible washing and rinsing performance while still ensuring minimal wear on fabrics.



Planted on solid ground

Noise levels and vibration control are becoming increasingly important as it becomes increasingly common to live in apartments with the laundry room close to living areas. Our contribution to better living conditions for people living next door to the washer is called Quattro Construction™. This is a unique yet simple system consisting of a stainless steel inner and outer drum, cast iron counter weights and four shock absorbers that transfer the vibrational energy from the outer drum to the bottom plate of the machine. In fact, the entire construction stands inside the casing and spinning at even maximum rpm can be achieved virtually free of vibrations. The Quattro system is extremely durable and prolongs the service life of the entire machine.



W6124XW | User Interface: Style | Color: White

Capacity/consumption

- Drum volume: 2.8 cu. ft.
- Capacity cotton: 26.5 lbs
- Maximum spin speed: 1400 RPM
- ENERGY STAR®

Programs

- Everyday wash
- Standard cotton
- Mix / Synthetic
- Wool / Hand wash
- Time program
- Auto
- Quick
- Heavy
- Rinse
- Spin
- Drain
- Easy Care
- Stain program
- Drum cleaning
- Jeans
- Shirts
- Hygiene
- Sports wear
- Conditioning
- Bedding
- Quick Pro
- Dark wash
- Allergy Cotton
- Allergy Synthetics

Modes

- Normal
- Green
- Allergy
- Speed
- Intensive
- Night

Features

- Full steel design concept
- Quattro Construction™
- Active Drum™
- Steel Seal™
- ASKO Pro Wash™
- Auto Dosing system
- Brushless motor
- Full graphic color display (TFT)
- 6 favorite programs
- 25 languages



W4114CW | W4114CT | User Interface: Logic | Color: White | Titanium ■

Capacity/consumption

- Drum volume: 2.8 cu. ft.
- Capacity cotton: 24.3 lbs
- Max spin speed: 1400 RPM
- ENERGY STAR®

Programs

- Everyday wash
- Standard cotton
- Mix / Synthetic
- Wool / Hand wash
- Time program
- Auto
- Quick
- Heavy
- Rinse
- Spin
- Drain
- Easy Care
- Drum cleaning
- Jeans
- Shirts
- Hygiene
- Bedding
- Quick Pro
- Dark wash
- Allergy Cotton
- Allergy Synthetics

Modes

- Normal
- Green
- Allergy
- Speed
- Intensive

Features

- Full steel design concept
- Quattro Construction™
- Active Drum™
- Steel Seal™
- Brushless motor
- High Quality LCD display
- 4 favorite programs
- 25 languages



W2084W | User Interface: Classic | Color: White

Capacity/consumption

- Drum volume: 2.1 cu. ft.
- Capacity cotton: 17.6 lbs
- Max spin speed: 1400 RPM
- ENERGY STAR MOST EFFICIENT®

Programs

- Everyday wash
- Standard cotton
- Mix / Synthetic
- Wool / Hand wash
- Time program
- Auto
- Quick
- Heavy
- Rinse
- Spin
- Drain
- Easy Care
- Drum cleaning
- Quick Pro
- Dark Wash

Modes

- Normal
- Green
- Intensive

Features

- Full steel design concept
- Quattro Construction™
- Active Drum™
- Steel Seal™
- Brushless motor
- High Quality LCD display
- 4 favorite programs
- 25 languages

Tumble dryers



A program for every need

Our new generation of tumble dryers have up to sixteen different programs to choose from, with eight of them being introduced along with our new generation tumble dryers. Other programs available are: Auto extra dry, Auto dry, Auto normal dry, Auto iron dry, Jeans, Synthetic, Terry, Down, Time and Airing.

Bedding

For drying large items such as sheets and duvet covers. This program uses a low temperature, more time and reverse drum movements to prevent the laundry from bundling.

Shirts

A program for shirts and blouses that dries at a low temperature with reverse drum movements. The program runs until the fabric is almost dry, with just a small amount of moisture remaining to prevent creasing.

Quick Pro

With this program you can get your wash completely dry in less than an hour.

Silk & Wool

This program uses a low temperature and stops just before the fabric is completely dry for maximum gentleness for sensitive fabrics such as silk and wool

Sportswear

A program for drying clothing with membranes, such as waterproof and breathable fabrics that require gentle care. This program is also ideal for sportswear made of mixed materials. A low temperature and more time are used to ensure that the load is completely dry throughout.

Conditioning

A program for the thermal activation and optimization of waterproofing agents used in the Conditioning program in the washer. This is a short program with a high temperature to ensure optimal waterproofing of the fabric.

Steam refresh

Ideal for freshening up garments such as suit jackets, wool sweaters and other items that would normally be dry cleaned or otherwise treated. Steam is very effective at removing odors from cigarette smoke to fire smoke.

Steam wrinkle care

Repetitive steam injections and heat treatment to eliminate creases in the fabric. Low heat is used to also cater for sensitive fabrics. Steam care can be used with up to six shirts at a time.



There's always room for a heat pump dryer

ASKO's heat pump dryers are closed systems in which the process air constantly circulates inside the tumble dryer, making it possible to install them in confined spaces, with little incoming air. Easy to integrate and install.



Steam is naturally caring

With the steam function, our heat pump dryers offer you a product that takes caring for your clothes to a new level. Steam is a highly effective and gentle means to care for your shirts, jackets and trousers. It is an easy way of getting your favorite shirts creaseless, but can also be used for refreshing clothes that don't need washing. You can steam both natural fibers, such as cotton and linen, and synthetics. And you have two different steam programs to choose from: Steam wrinkle care and Steam refresh.



Steam refresh program

In our daily lives we constantly encounter different smells on our clothes. These can include cigarette smoke, exhaust fumes and odors from animals or food. Our newly developed Steam refresh program is ideal for dealing with such situations. The program freshens up garments such as jackets, wool sweaters and other items that would normally be dry cleaned or otherwise treated. Steam has proven to be very effective on odors from both cigarettes and fires. The program takes just over 21 minutes.



Steam wrinkle care

Even if we have done our utmost to create programs that automatically stop to avoid over-drying, creases will still appear in some fabrics. Using the steam wrinkle care program effectively reduces and eliminates creases in, for example, shirts and linen. The program uses repetitive steam injections and heat treatment at low temperatures, which also make it suitable for sensitive fabrics. You can steam treat up to six shirts for perfect results. 200 ml of water is used and the program is done in just 25 minutes or so.



Gentle heat pump drying

ASKO's heat pump dryers are closed systems in which the process air constantly circulates inside the tumble dryer, making it possible to install them in confined spaces. The air is dehumidified with the help of an evaporator, which means that lower temperatures can be used in the drying process. This, in turn, makes the drying gentler on fabrics without any loss in drying capacity or effectiveness. As well as gentler drying, the heat pump dryer also reduces the risk of clothes shrinking and even very sensitive fabrics can be dried. The heat pump technology in combination with our smart Sensi Dry system and Auto program makes ASKO's heat pump dryers extremely energy efficient. That is good news for both the environment and your wallet.



Stainless steel drum

At ASKO, we believe not only that stainless steel will outlast plastic, but also that quality materials will always look better in years to come. Eventually, galvanized steel rusts, so we decided to make our drums out of stainless steel. That's why our tumble dryers really do last longer.



Soft Drum™ and Air Lift™ paddles

Soft Drum™ is a solution developed to enhance air flow around the load, thereby increasing the drying effect. The circular indentations with beveled edges also have a cushioning effect that reduces wear and tear on fabrics. The new drum design allows for even and gentle drying with both small and large loads. We are also introducing a new paddle design in the shape of the Air lift™ paddles, which are designed to lift the load as high as possible for increased time in the air flow to enhance the drying effect and shorten the drying time. The Air Lift™ paddles distribute the clothes evenly in the drum and prevent them from bundling. Short reverse drum movements are also added to help prevent bundling.



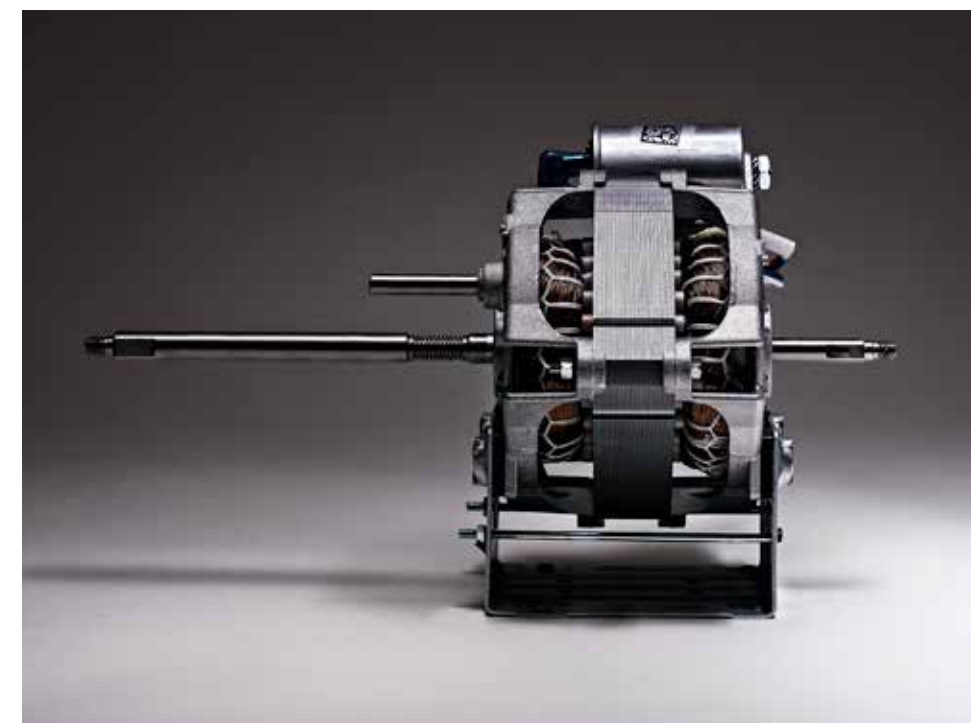
Interior light

All of our Logic and Style tumble dryers are equipped with an interior LED light that provides ambient light with a premium feeling. It is nice to be able to see those items that can easily be left at the back of the dryer. The porthole is also illuminated for easy loading and unloading.



Sturdy construction with five ball bearings

The fact is that ASKO uses more steel in its tumble dryers than any other brand. The new generation of ASKO tumble dryers is no exception. That's why we build them on a solid steel base with steel feet. What's more, we have also fitted our tumble dryers with no less than five ball bearings: one on the drum shaft, two to rest the drum on, and two ball bearings to support the motor.



Brushless motor

The motor in your new ASKO tumble dryer will not break down. Want to know the secret? It's because we have fitted our tumble dryers with strong and very long-lasting brushless motors, which are also quieter and more energy efficient. The key word here is "brushless", because brushes wear out and without them that's one less part that can break.

Protect your dryer from lint



Drying result guaranteed

Lint is the tumble dryer's worst enemy and will inevitably lead to longer drying times and other problems. To prevent lint from getting into the tumble dryer, we have designed the Multi Filter System™. This is a filter system of five different filters that ensures that all lint and even smaller particles are trapped before they reach the sensitive inner parts of the tumble dryer.

Lint Trap

The Lint Trap™ is placed in the door and is designed to be easy to empty and clean. Adopt the habit of always checking that the Lint Trap™ is empty before tumble drying. Always empty it after tumble drying.



On all dryers

Front Filter

The Front Filter is placed in the cooling air inlet for the condenser and keeps the fan wheel free from dust. This additional filter will extend the condenser unit cleaning interval and ensure the best possible performance over time.



On condenser dryers

Mesh filter

The mesh filter is one of two filters that provides extra protection for the condenser in our heat pump dryers. This filter traps slightly smaller particles than the Lint Trap™. The mesh filter is automatically cleaned with water.



On heat pump dryers

Foam filter

As a final step before the air hits the condenser the foam filter traps the smallest dust particles. The foam filter is easy to clean in a washing machine without detergent and softener.



On heat pump dryers

Lint Cup

Models with a steam function have an additional small filter, the Lint Cup, that protects the steam generator from lint and dust.



On heat pump dryers

Tumble dryers



T611VUW | User Interface: Style | Type: Venting | Color: White

Capacity/consumption

- Drum volume: 5.1 cu. ft.
- Capacity cotton: 24.3 lbs

Programs

- Auto extra dry
- Auto dry
- Auto normal dry
- Auto iron dry
- Jeans
- Synthetic
- Terry
- Down
- Bedding
- Shirts
- Sports wear
- Conditioning
- Quick Pro
- Time
- Airing

Features

- Full steel design concept
- Soft Drum™
- Air Lift™ Paddles
- Butterfly Drying™
- Brushless motor and drain pump
- Full graphic color display (TFT)
- Interior LED light
- 6 favorite programs
- Lint Trap™



T411HSW | User Interface: Logic | Type: Heat pump | Color: White

Capacity/consumption

- Drum volume: 5.1 cu. ft.
- Capacity cotton: 24.3 lbs

Programs

- Auto extra dry
- Auto dry
- Auto normal dry
- Auto iron dry
- Jeans
- Synthetic
- Terry
- Down
- Bedding
- Silk & wool
- Shirts
- Steam wrinkle care
- Steam refresh
- Quick Pro
- Time
- Airing

Features

- Full steel design concept
- Soft Drum™
- Air Lift™ Paddles
- Butterfly Drying™
- Brushless motor and drain pump
- High quality LCD display
- Interior LED light
- 4 favorite programs
- Multi filter system
- Lint Trap™



T411VDW | T411VDT | User Interface: Logic | Type: Venting | Color: White | Titanium ■

Capacity/consumption

- Drum volume: 5.1 cu. ft.
- Capacity cotton: 24.3 lbs

Programs

- Auto extra dry
- Auto dry
- Auto normal dry
- Auto iron dry
- Jeans
- Synthetic
- Terry
- Down
- Bedding
- Shirts
- Quick Pro
- Time
- Airing

Features

- Full steel design concept
- Soft Drum™
- Air Lift™ Paddles
- Butterfly Drying™
- Brushless motor and drain pump
- High quality LCD display
- Interior LED light
- 4 favorite programs
- Lint Trap™

Tumble dryers



T208HW | User Interface: Classic | Type: Heat pump | Color: White

Capacity/consumption

- Drum volume: 4.1 cu. ft.
- Capacity cotton: 17.6 lbs
- ENERGY STAR MOST EFFICIENT®

Programs

- Auto extra dry
- Auto dry
- Auto normal dry
- Auto iron dry
- Synthetic
- Bedding
- Silk & Wool
- Quick Pro
- Time
- Airing

Features

- Full steel design concept
- Soft Drum™
- Air Lift™ Paddles
- Butterfly Drying™
- Brushless motor and drain pump
- High quality LCD display
- 4 favorite programs
- Lint Trap™



T208CW | User Interface: Classic | Type: Condenser | Color: White

Capacity/consumption

- Drum volume: 4.1 cu. ft.
- Capacity cotton: 17.6 lbs

Programs

- Auto extra dry
- Auto dry
- Auto normal dry
- Auto iron dry
- Synthetic
- Bedding
- Quick Pro
- Time
- Airing

Features

- Full steel design concept
- Soft Drum™
- Air Lift™ Paddles
- Butterfly Drying™
- Brushless motor and drain pump
- High quality LCD display
- 4 favorite programs
- Lint Trap™



T208VW | User Interface: Classic | Type: Venting | Color: White

Capacity/consumption

- Drum volume: 4.1 cu. ft.
- Capacity cotton: 17.6 lbs

Programs

- Auto extra dry
- Auto dry
- Auto normal dry
- Auto iron dry
- Synthetic
- Bedding
- Quick Pro
- Time
- Airing

Features

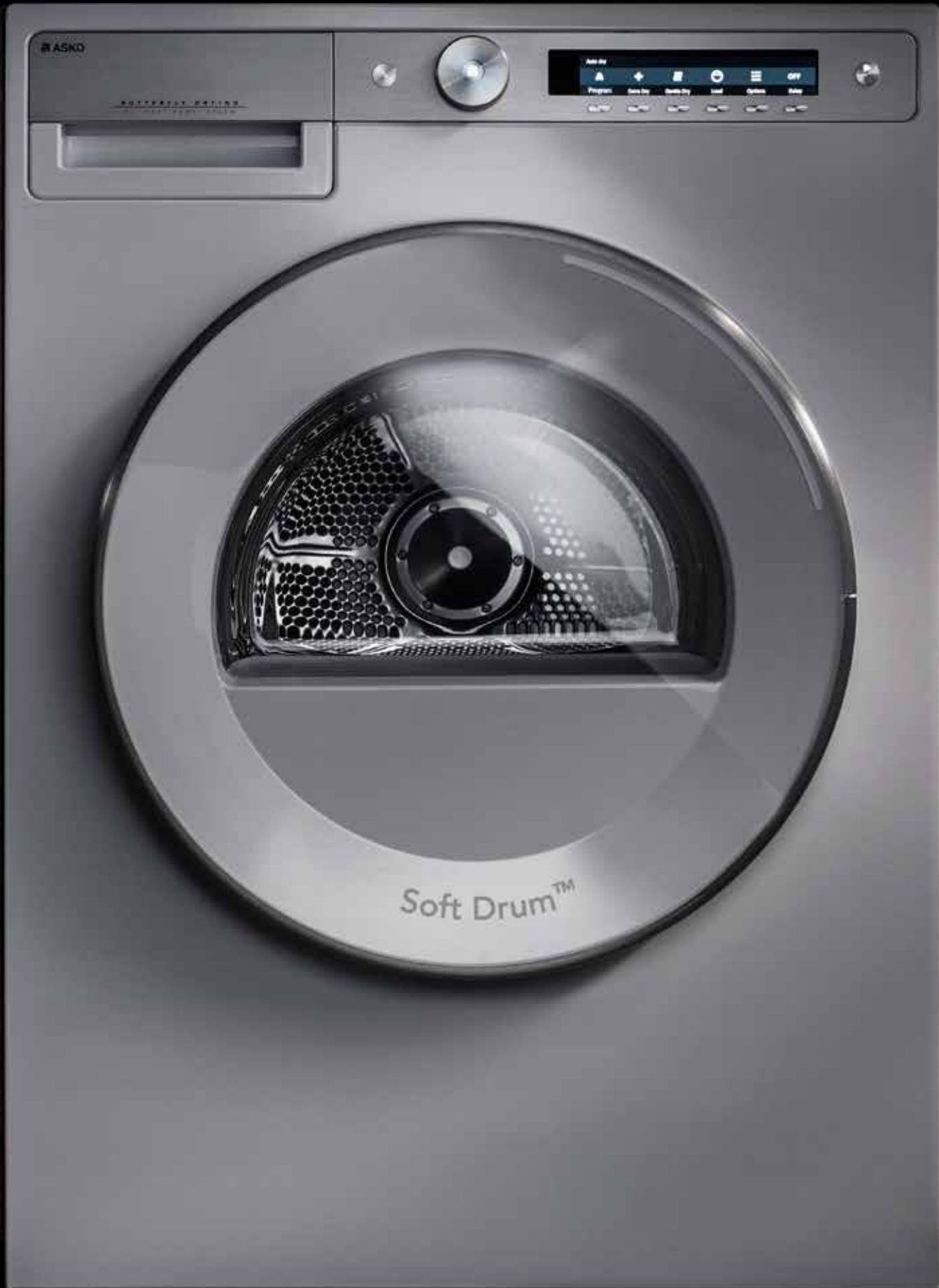
- Full steel design concept
- Soft Drum™
- Air Lift™ Paddles
- Butterfly Drying™
- Brushless motor and drain pump
- High quality LCD display
- 4 favorite programs
- Lint Trap™



The dream machine

Our founder, Karl-Erik Andersson, created the first ASKO washing machine. He built it for his mother, just to make her life a bit easier. The result was impressive and following this tradition we have designed and developed our laundry products for over 65 years, always with the end user's needs in mind. Our first laundry products were designed to last almost forever, with high-quality materials down to the smallest detail. The new washers and dryers from ASKO have all this, but even additional new laundry care innovations.

Today, people use clothes made from a large variety of fabrics, buy expensive but delicate garments, live active lives and change outfits from day to day. This time around we have done our best to learn from real people, finding out what they think are the biggest problems in the laundry room and what their dream machine would be like. We combined these insights with our years of experience in both domestic and commercial laundry to create a new generation of user-friendly, innovative and long-lasting washing machines and tumble dryers.



ASKO
Inspired by Scandinavia