

### FEATURED MODEL

**157-139-ST** BLANCOTERRA™ Twin Handle without side spray in Stainless (Satin Nickel)

### ADDITIONAL MODELS

**157-139-CR** Polished Chrome  
**157-139-ORB** Oil Rubbed Bronze

### FEATURES

- Solid brass body
- Ceramic disc cartridge
- Color coded hot & cold supply lines
- Reversible mounting hardware adapts to thick or thin mounting surfaces
- 2.2 G.P.M. flow rate
- Installation in a 1-3/8" hole

### CODE/STANDARDS COMPLIANCE

ASME A112.18.1-2005  
 IAPMO Listed

### WARRANTY

Blanco America's Kitchen faucets feature a "NO HASSLE" LIMITED LIFETIME WARRANTY to be free of all manufacturing defects under normal use. See our complete warranty for details.

While Blanco America endeavors to provide accurate information, all dimensions are nominal, cannot be guaranteed, and are subject to change or cancellation. Blanco America assumes no responsibility for use of superseded or voided specifications.

### PRODUCT SPECIFICATION

Kitchen faucet to include twin lever handles with solid brass body and ceramic disc cartridge. Faucet dimensions to be as follows: Reach: 9-11/16"; Spout Height: 7". Hot and cold supply lines to be color coded. Reversible mounting hardware to adapt to thick or thin mounting surfaces. Kitchen faucet to be BLANCOTERRA™ Twin Handle without side spray, Model 157-139-\_\_\_\_\_ in \_\_\_\_\_ finish.

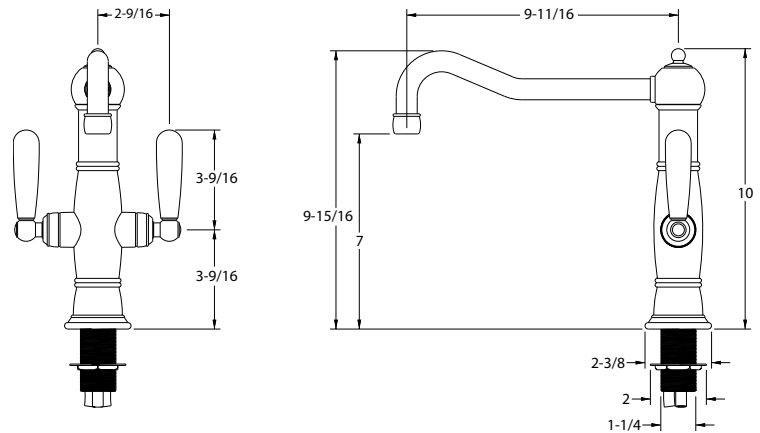
- Stainless (Satin Nickel) 157-139-ST
- Polished Chrome 157-139-CR
- Oil Rubbed Bronze 157-139-ORB



MODEL 157-139

### NOMINAL DIMENSIONS

MODEL	REACH	SPOUT HEIGHT	FAUCET HEIGHT
157-139	9-11/16	7	10



See next page for exploded parts drawing and parts list.

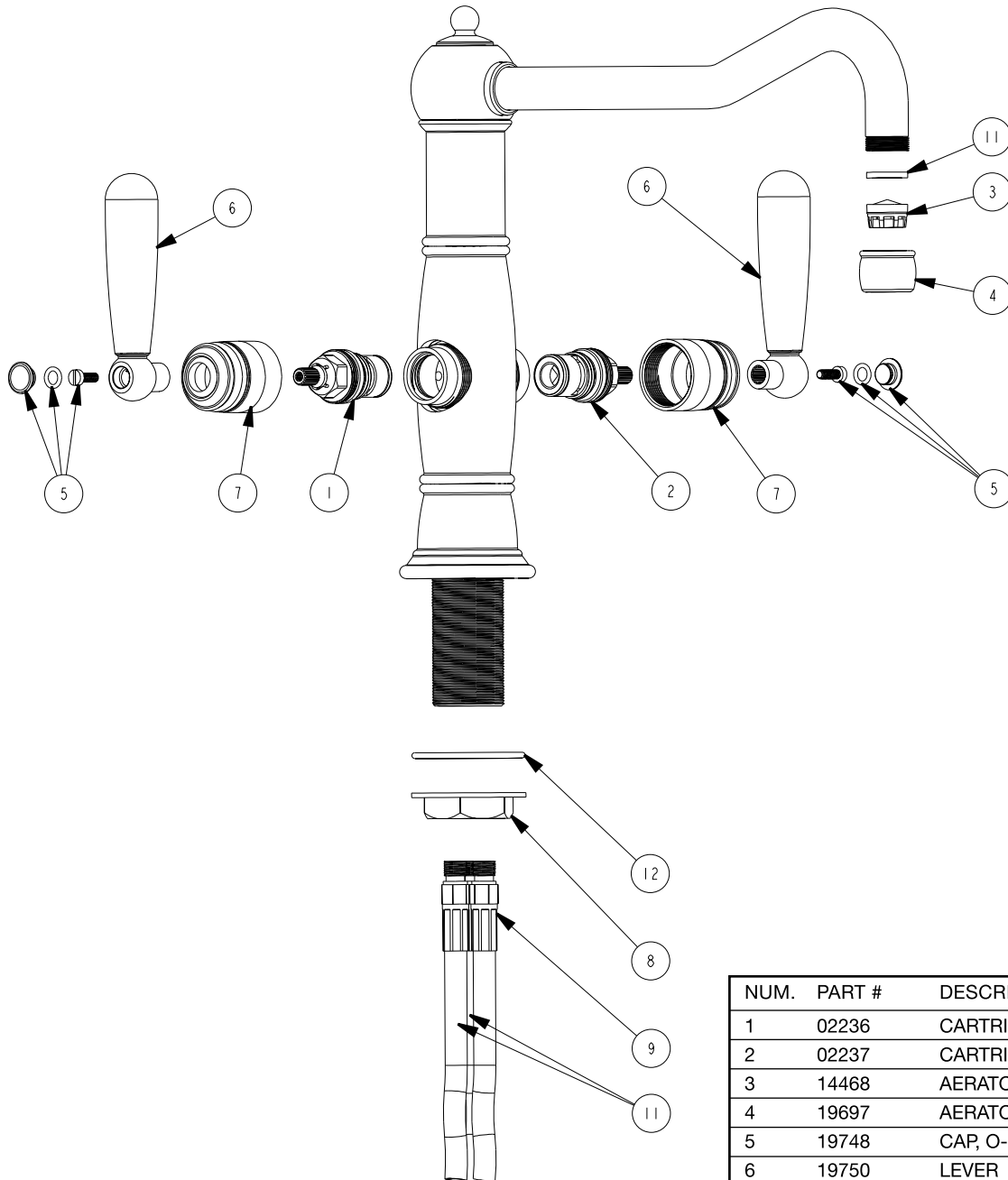
### JOB INFORMATION

Job Name: \_\_\_\_\_  
 Contact: \_\_\_\_\_  
 Date Specified: \_\_\_\_\_  
 Specifier: \_\_\_\_\_  
 Contractor: \_\_\_\_\_

**BLANCO AMERICA**  
**800.451.5782**  
**www.blancoamerica.com**

### BLANCOTERRA™ TWIN HANDLE

### MODEL 157-139



NUM.	PART #	DESCRIPTION
1	02236	CARTRIDGE HOT
2	02237	CARTRIDGE COLD
3	14468	AERATOR
4	19697	AERATOR HOUSING
5	19748	CAP, O-RING & SCREW
6	19750	LEVER
7	19772	VALVE COVER
8	20083	NUT
9	20087	FLEX HOSE
10	20190	FLEX HOSE
11	91390	RUBBER WASHER
12	91794	O-RING