

FEATURED MODEL

157-064-CR Pot Filler Faucet Deck Mounted in Polished Chrome

ADDITIONAL MODELS

157-064-ST Stainless (Satin Nickel)

FEATURES

- Cold water only
- Solid brass body and dual shut-off valves
- Ceramic disc cartridge
- Wall mounted
- 2.2 G.P.M. flow rate
- Two quarter-turn shut-off valves

CODE/STANDARDS COMPLIANCE

ASME A112.18.1M-2003

IAPMO Listed

WARRANTY

Blanco America's kitchen faucets feature a "NO HASSLE" LIMITED LIFETIME WARRANTY to be free of all manufacturing defects under normal use. See our complete warranty for details.

While Blanco America endeavors to provide accurate information, all dimensions are nominal, cannot be guaranteed, and are subject to change or cancellation. Blanco America assumes no responsibility for use of superseded or voided specifications.

PRODUCT SPECIFICATION

Kitchen faucet to be deck mounted pot filler with solid brass body, ceramic disc cartridge, and two quarter-turn shut-off valves. Faucet dimensions to be as follows: Overall length: 22-3/8". Kitchen faucet to be Blanco Pot Filler, Deck Mounted, Model 157-064-_____in_____finish.

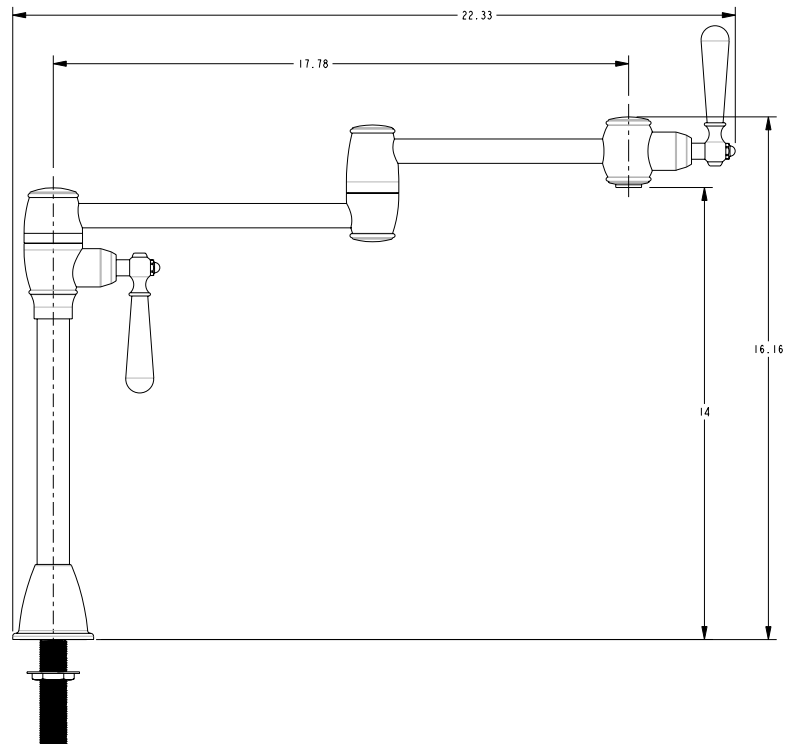
- Polished Chrome 157-064-CR
- Stainless (Satin Nickel) 157-064-ST



MODEL 157-064

NOMINAL DIMENSIONS

MODEL	OVERALL LENGTH	SPOUT HEIGHT
157-064	22-3/8	14



JOB INFORMATION

Job Name: _____

Contact: _____

Date Specified: _____

Specifier: _____

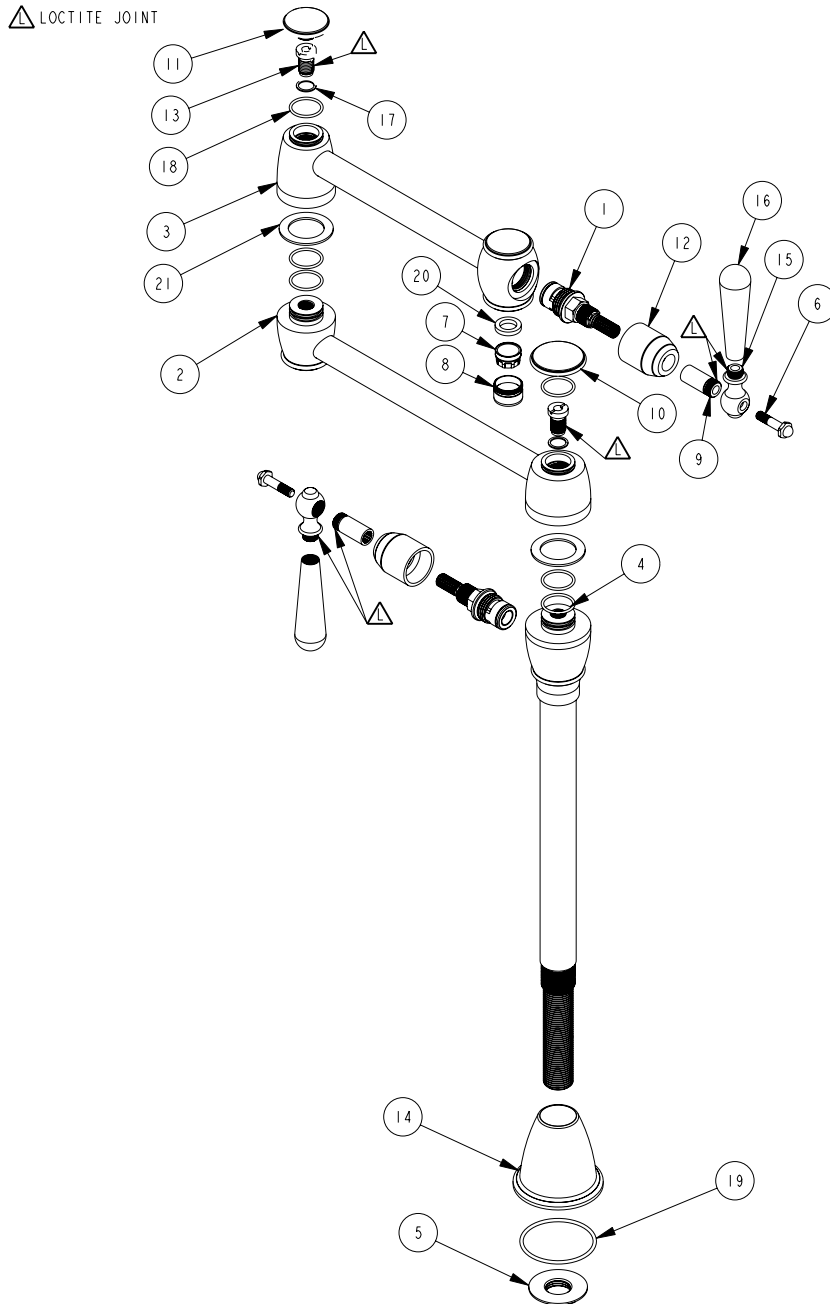
Contractor: _____

See next page for exploded parts drawing and parts list.

BLANCO AMERICA
800.451.5782
www.blancoamerica.com

POT FILLER DECK MOUNTED

MODEL 157-064



NUM.	DOC. PART #
1	02241
2	02859
3	02860
4	02861
5	13985
6	15222
7	18196
8	18197
9	18742
10	19050
11	19051
12	19052
13	19053
14	19056
15	19172
16	19173
17	91059
18	91060
19	91100
20	91819
21	91895