

# BDR190NASSHH

35.0" x 35.5" x 21.75" (H x W x D)

Two drawer refrigerator for built-in installation, with stainless steel front and thin handles

## Highlights:

Designed exclusively for built-in use under counters

Two slide drawers open and close smoothly

Includes metal containers for creative storage options

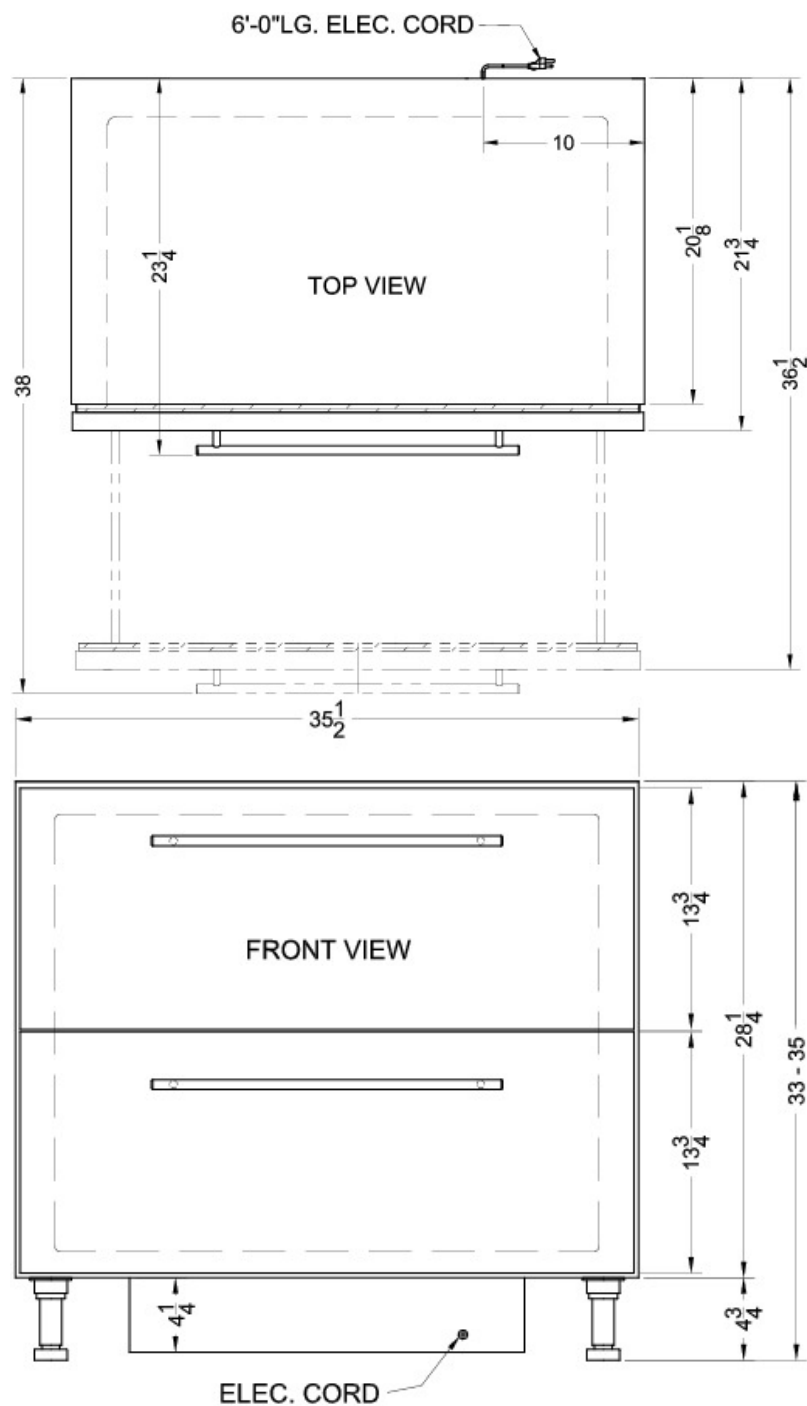
Thin stainless steel handles complete a signature look



Automatic defrost	Simplify appliance care by letting your refrigerator defrost itself
Built-in installation	Make the best use of space by installing your refrigerator under the counter and flush with other cabinets
Stainless steel front	Transform your kitchen with the refinement of stainless steel
Slide-out drawers	Smooth gliding drawers open easily with generous space to reach inside
Professional horizontal handles	Add sleek style in stainless steel with modern handles
Adjustable thermostat	Control your food's temperature with ease and accuracy
See-thru glass bottom top drawer	Save time rummaging through refrigerator contents with this unique and practical "window" into your bottom drawer from the top
Metal containers	Organize your refrigerator contents with these attractive and convenient storage bins
Lift-out containers with covers	Maximize interior space and prolong freshness by separating and sealing your food.
Interior light	Automatically illuminates when you open the door

## Specifications:

Height	35.0 up to 34.5"
Width	35.5"
Depth	21.75"
Capacity	6.7 cu.ft.
Ext Depth with Handle	23.25"
Interior Height 1	24.0"
Interior Width 1	31.5"
Interior Depth 1	17.5"
Comp Step Height	4.0"
Comp Step Width	19.0"
Comp Step Depth	5.5"
Height Adjustable	true
Shipping Weight	197.0 lbs.
Amps	1.0
Voltage/Frequency	115 V AC/60 Hz
US Electrical Safety	UL
Drawers	true
Drawer Quantity	2
Defrost Type	Automatic
Depth with door at 90°	38.0"
Light	true
Fan Type	Exterior
Thermostat Type	Dial
Condensor Location	Rear of Unit
Level Legs Quantity	4
Freon Type	R134a
Freon Oz	2.3
Parts/Labor Warranty	1 Year
Compressor Warranty	5 Years



Summit Appliance Division, Felix Storch, Inc.  
 770 Garrison Ave • Bronx, NY 10474  
 Phone: 718-893-3900 • Fax: 718-842-3093  
 Email: [info@summitappliance.com](mailto:info@summitappliance.com)