

ELKAY[®]

SPECIFICATIONS

Gourmet Undermount Sink with Perfect Drain[™] Model ELUH3220PD and ELUH322010PD

GENERAL

Highest quality sink formed of #18 (1.2mm) gauge, type 304 (18-8) nickel bearing stainless steel with **Perfect Drain**. Undermount.

DESIGN FEATURES

Bowl Depth: See chart on next page.

Coved Corners: 1-3/4" (44mm) vertical and horizontal radius.

Finish: Exposed surfaces are hand blended to a Lustrous

Highlighted Satin finish.

Underside: Fully protected by Sound Guard[®] undercoating to reduce condensation and dampen sound.

Perfect Drain: Seamlessly welded stainless steel collar eliminates the gap between a traditional drain and the sink for a sanitary and gap free installation. Each sink shipped with two LKPD1 drain kits, or a garbage disposer can be installed on either sink bowl for user convenience.

Patent Pending

OTHER

Drain opening: 3-3/8" (86mm)

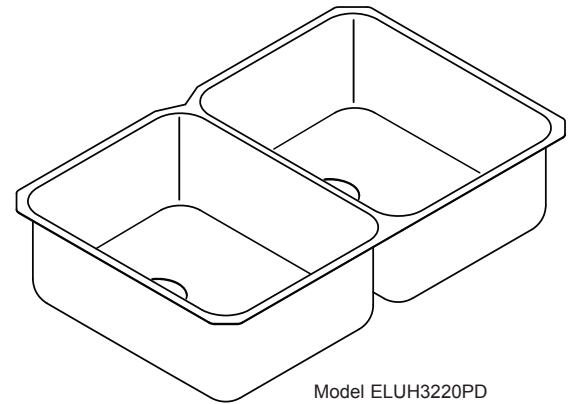
NOTE: All Elkay undermount sinks are designed to affix to the underside of any solid surface countertop.

Waste Fitting complies with ASME A112.18.2/CAN/CSA-B125.2

Sink complies with ASME A112.19.3-2008 / CSA B45.4-08.



These sinks are listed by the International Association of Plumbing and Mechanical Officials as meeting the requirements of the Uniform Plumbing Code and the National Plumbing Code of Canada.



Model ELUH3220PD



OPTIONAL ACCESSORIES

Bottom Grid: LKWOBG1418SS

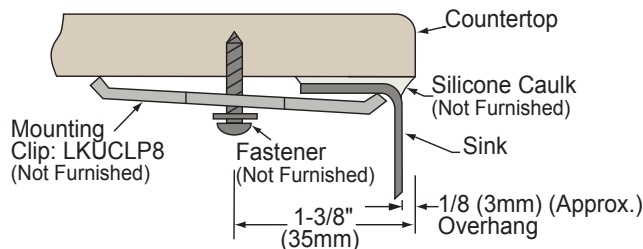
Cutting Boards: CBR1418, CBS1418

Mounting Clip: LKUCLIP8 (2 packages required)

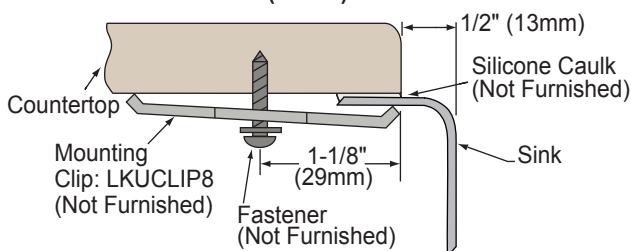
Rinsing Baskets: LKWRB1418SS, LKWERBSS

Utensil Caddy for Rinsing Basket: LKWUCSS

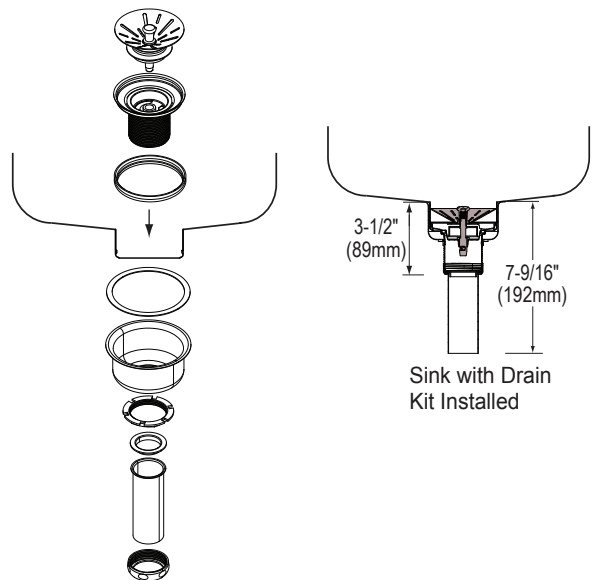
Installation Profile 1/8" (3mm) Overhang (ELU Sink)



Installation Profile 1/2" (13mm) Reveal



Designed to affix to the underside of any solid surface countertop.



In keeping with our policy of continuing product improvement, Elkay reserves the right to change product specifications without notice. Please visit elkayusa.com for most current version of Elkay product specification sheets.

This specification describes an Elkay product with design, quality and functional benefits to the user. When making a comparison of other producers' offerings, be certain these features are not overlooked.

Elkay

elkayusa.com

2222 Camden Court
Oak Brook, IL 60523

Printed in U.S.A.
©2011 Elkay

(Rev. 07/11) 1-419

ELKAY[®]

SPECIFICATIONS

Gourmet Undermount Sink with Perfect Drain[™]

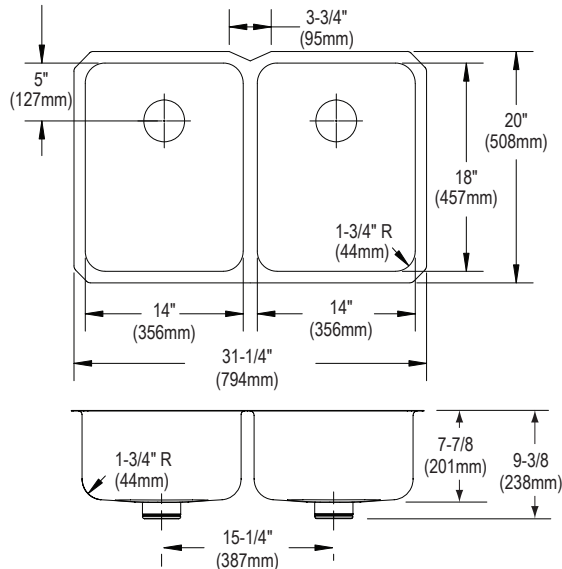
Model ELUH3220PD and ELUH322010PD

SINK DIMENSIONS*

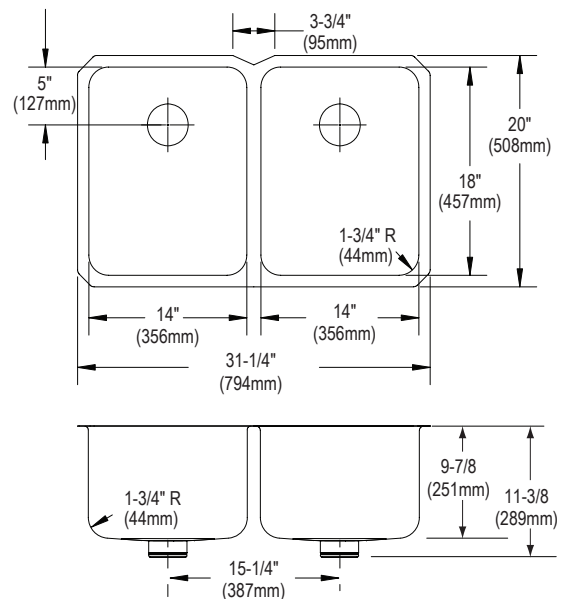
Model Number	Overall			Inside Each Bowl			Cutout in Countertop	Minimum Cabinet Size
	L	W	D	L	W	D		
ELUH3220PD	31-1/4 (794mm)	20 (508mm)	9-3/8 (238mm)	14 (356mm)	18 (457mm)	7-7/8 (200mm)	See Template**	36 (914mm)
ELUH322010PD	31-1/4 (794mm)	20 (508mm)	11-3/8 (289mm)	14 (356mm)	18 (457mm)	9-7/8 (251mm)		36 (914mm)

*Length is left to right. Width is front to back.

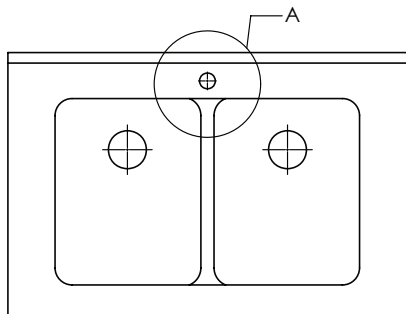
**Template (# 74180287) is packed with every sink.



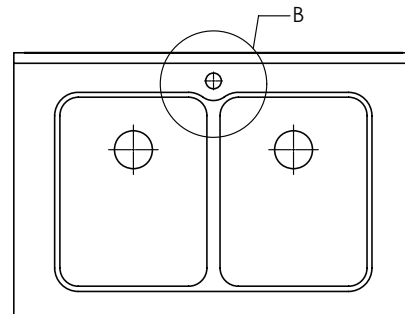
ELUH3220 Illustrated



ELUH322010 Illustrated



1/8" OVERHANG INSTALLATION
DETAIL A



1/2" REVEAL INSTALLATION
DETAIL B

In keeping with our policy of continuing product improvement, Elkay reserves the right to change product specifications without notice. Please visit elkayusa.com for most current version of Elkay product specification sheets.

This specification describes an Elkay product with design, quality and functional benefits to the user. When making a comparison of other producers' offerings, be certain these features are not overlooked.