

ELKAY®

SPECIFICATIONS

Avado™ Double Bowl Sink Top Mount with Work Bench™ Model EFTLB332210CDBL

GENERAL

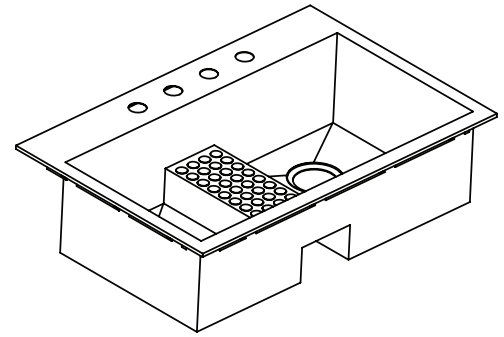
Highest quality sink fabricated of #16 gauge (1.6mm), type 304(18-8) nickel-bearing stainless steel. Top mount.

DESIGN FEATURE

Bowl Depth: 10" (254mm)
 Coved Corners: Zero radius.
 Rim Height: 3/8" (10mm)
 Finish: Exposed surfaces have a polished satin finish.
 Underside: Fully protected by heavy duty Sound Guard® undercoating designed to reduce condensation and dampen sound.
 Work Bench Height: 4" (102mm)

OTHER

Drain Opening: 3-1/2" (89mm)
 Note: Unless otherwise specified, sink is furnished with 4 faucet holes as shown.
 Sink complies with ASME A112.19.3-2008 / CSA B45.4-08

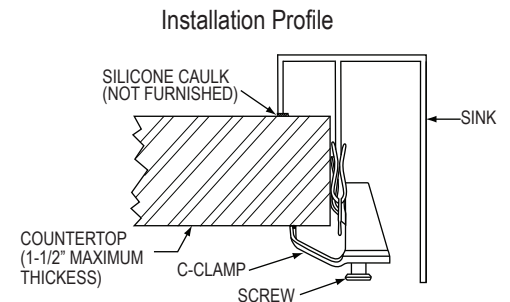
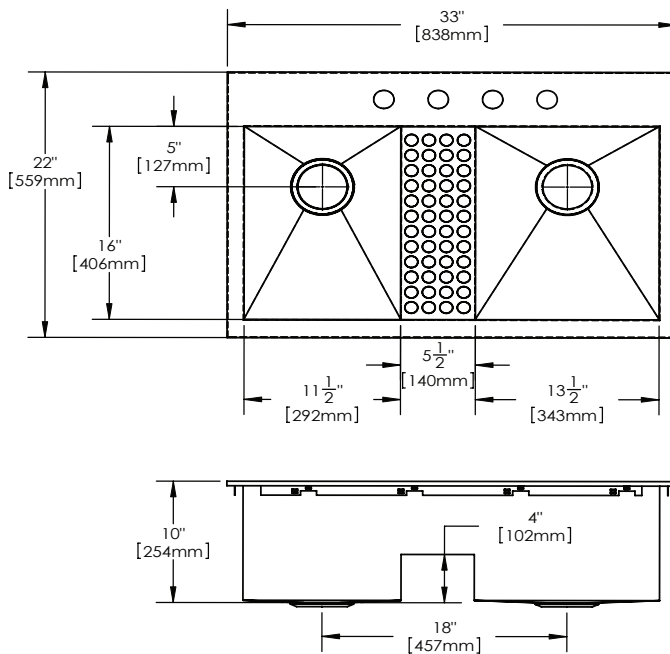


Model EFTLB332210CDBL

SINK DIMENSIONS*(INCHES)

Overall		Inside Left Bowl			Inside Right Bowl			Cutout in Countertop (1-1/2" (38mm) Corner Radius)		No. of 1-1/2" (38mm) Dia. Faucet Holes 4" (102mm) Center	Minimum Cabinet Size
L	W	L	W	D	L	W	D	L	W		
33 (838mm)	22 (559mm)	11 1/2 (292mm)	16 (406mm)	10 (254mm)	13 1/2 (343mm)	16 (406mm)	10 (254mm)	32 3/8 (822mm)	21 3/8 (543mm)	1, 2, MR2, 3, 4, or 5	36 (914mm)

*Length is left to right. Width is front to back.



In keeping with our policy of continuing product improvement, Elkay reserves the right to change product specifications without notice. Please visit elkayusa.com for most current version of Elkay product specification sheets.

This specification describes an Elkay product with design, quality, and functional benefits to the user. When making a comparison of others producers offerings, be certain these features are not overlooked.

SPECIFICATIONS

Avado™ Double Bowl Sink Top Mount with Work Bench™ Model EFTLB332210CDBL

OPTIONAL ACCESSORIES*

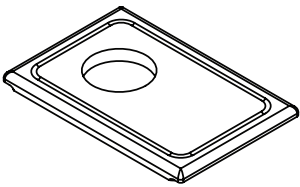
Utensil Caddy for Rinsing Basket: LKWUCSS

Drain: LK99

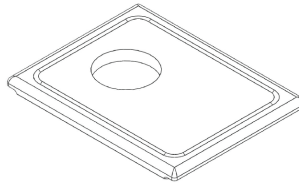
For additional Accessories, see table below.

Model #	Description	Bowl	Overall			Material/Finish
			L	W	Depth/Thickness	
LKCBF1116HW	Cutting Board	Right	11 1/4 (286mm)	16 7/8 (429mm)	1 (25mm)	Hardwood
LKCBF1316HW	Cutting Board	Left	13 1/4 (337mm)	16 7/8 (429mm)	1 (25mm)	Hardwood
LKFOBG1116SS	Bottom Grid	Right	10 1/2 (267mm)	15 (381mm)	1 1/8 (29mm)	Polished Stainless Steel
LKFOBG1316SS	Bottom Grid	Left	12 1/2 (318mm)	15 (381mm)	1 1/8 (29mm)	Polished Stainless Steel
LKFRB1116SS	Rinsing Basket	Right	10 1/2 (267mm)	15 (381mm)	4 3/16 (106mm)	Polished Stainless Steel
LKFRB1316SS	Rinsing Basket	Left	12 1/2 (318mm)	15 (381mm)	4 3/16 (106mm)	Polished Stainless Steel

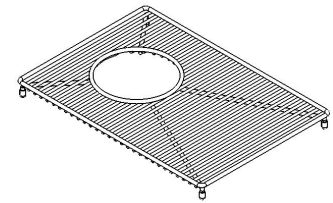
*Length is left to right. Width is front to back.



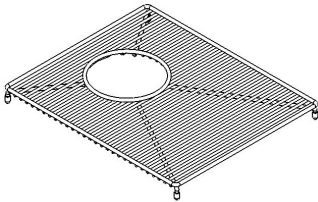
LKCBF1116HW



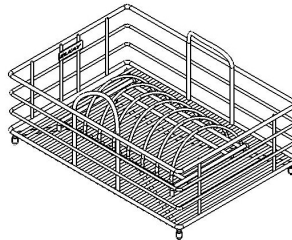
LKCBF1316HW



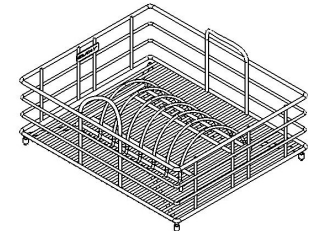
LKFOBG1116SS



LKFOBG1316SS

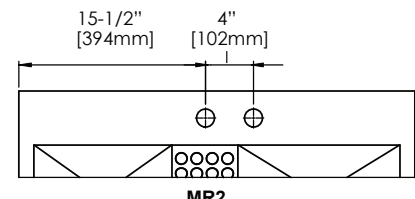
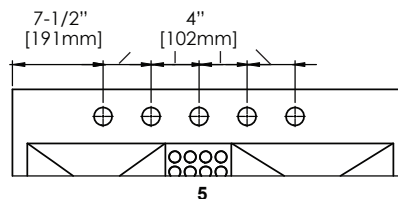
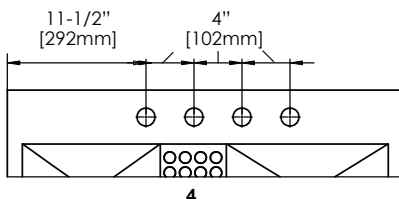
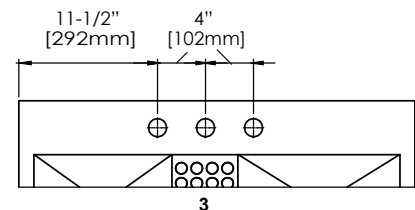
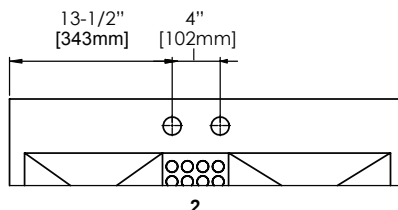
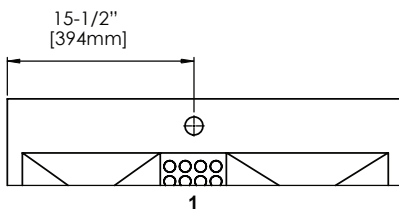


LKFRB1116SS



LKFRB1316SS

HOLE DRILLING CONFIGURATIONS



In keeping with our policy of continuing product improvement, Elkay reserves the right to change product specifications without notice. Please visit elkayusa.com for most current version of Elkay product specification sheets.

This specification describes an Elkay product with design, quality, and functional benefits to the user. When making a comparison of others producers offerings, be certain these features are not overlooked.